

Arch.: Delugan Meissl Associated Architects, Vienna, Austria

 **EQUITONE**  
Fibre cement facade materials



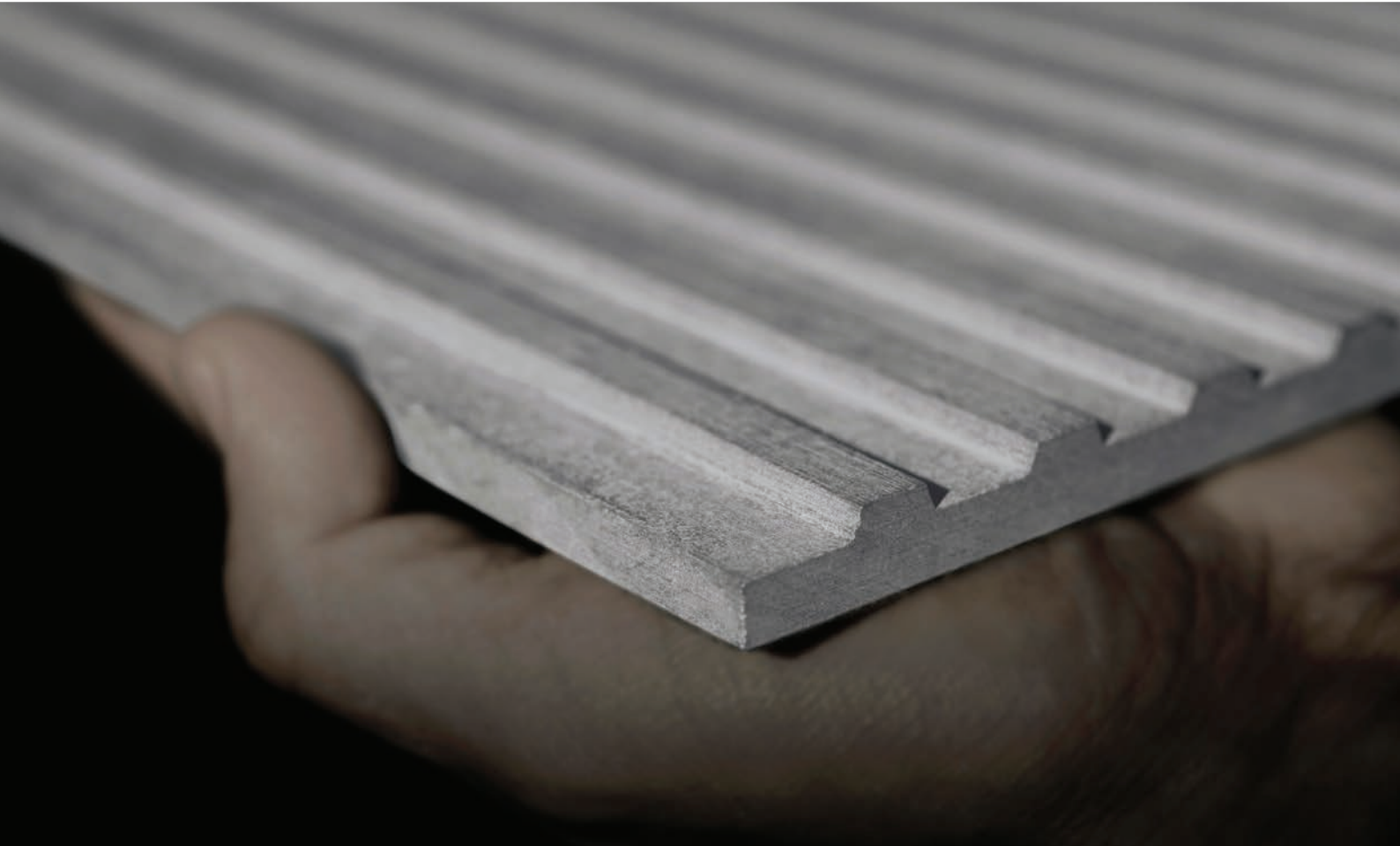


# EQUITONE fibre cement facade materials

When Ludwig Hatschek invented fibre cement in the late 19th century, he combined the basic elements of the earth: mineral materials, water, air and fire (heat) in a simple filtration process. He named the resulting material "Eternit", hinting at the superior durability of this new material. Our mother company, Etex, has been manufacturing fibre cement materials since 1905. The most prestigious incarnation in this proud heritage of unique materials is the EQUITONE® facade material range. The Hatschek production process makes each EQUITONE facade panel unique with an individual fibre cement texture. Most EQUITONE facade materials are through-coloured with a raw, unfinished character.

In the 1950s leading architects such as Walter Gropius pioneered the use of coated fibre cement panels using the ventilated facade (rainscreen) system. Designer Willy Guhl created the famous "loop chair" from 1 piece of fibre cement in 1954. This design still bears witness to the core qualities of the fibre cement base material: thin, light, durable and beautiful. In 1987, Herzog & De Meuron designed the Ricola storage building in Laufen using uncoated fibre cement panels. The resulting shutter facade, which is a reference to the cardboard boxes inside, inspired our company to start the industrial development of raw untreated fibre cement materials.

Today, EQUITONE has a full range of through-coloured, untreated fibre cement materials. Leading architects of our time are exploring and transforming the EQUITONE material in remarkable facade designs.





# Design potential

EQUITONE facade materials offer unparalleled design flexibility. The fibre cement material is through-coloured, which means the surface displays the inner texture and colour of the core fibre cement material. No matter what facade design options you explore, the through-coloured materials can be transformed into crisp, monolithic facade details.

EQUITONE facade materials come in a maximum panel size of 1.25 x 3m (4' x 10') and can be transformed into any size or shape using standard tools in the workshop or on site. The material can be perforated using waterjet or CNC machines, large or very small cuts can be made, it can even be embossed and printed. Some designers have used it for interiors or furniture. The through-coloured material allows you to achieve flawless intricate details.



Arch.: AR-TE, Leuven, Belgium



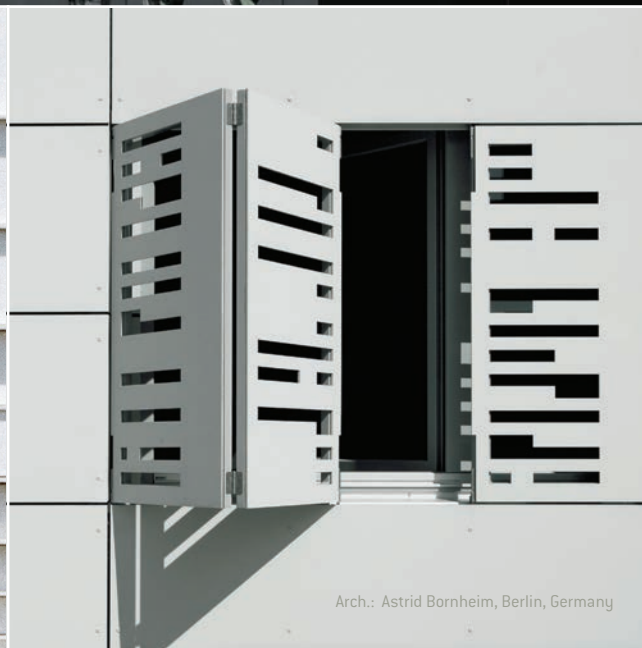
Arch.: Regina Schineis, Augsburg, Germany



Arch.: Bogusław Wórzeczek, Wrocław, Poland



Arch.: Busmann + Haberer, Berlin, Germany



Arch.: Astrid Bornheim, Berlin, Germany



Kindergarten in Tjome  
Arch.: INCUBE Architecture, Oslo, Norwegen

EQUITONE [linea]

---



# EQUITONE [linea]

EQUITONE [linea] is a unique 3D shaped, through-coloured facade material that plays with light and shadow. EQUITONE [linea] displays a linear texture that highlights the raw inner texture of the core fibre cement material. Every moment of the day, the changing angle of the daylight gives the facade material a different aspect. The material comes in a large panel size and can be transformed into any size or shape in the workshop or on site. No matter what design options you explore, EQUITONE's through-coloured nature guarantees crisp, monolithic details. Both visible and invisible fixing options exist for EQUITONE [linea].

Available in 9 colours



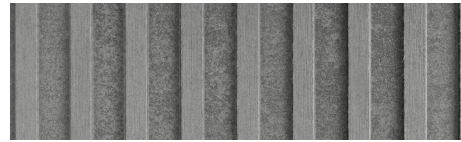
LT00



LT10



LT15



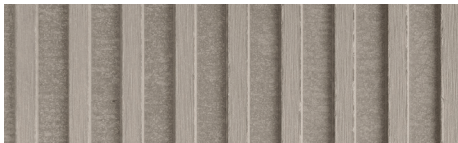
LT20



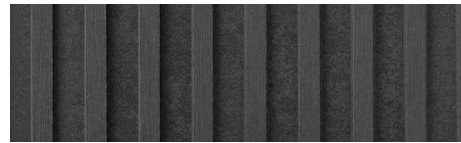
LT30



LT40



LT60



LT85



LT90

Shadow effect:

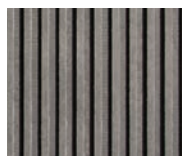
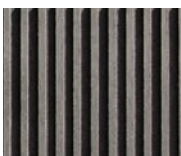
8:00 AM

9:00 AM

10:00 AM

11:00 AM

12:00 Midday







Arch.: Studio Weave, London

the nature of things

EQUITONE shadow art by Fred Eerdeken



# EQUITONE [Iunara]

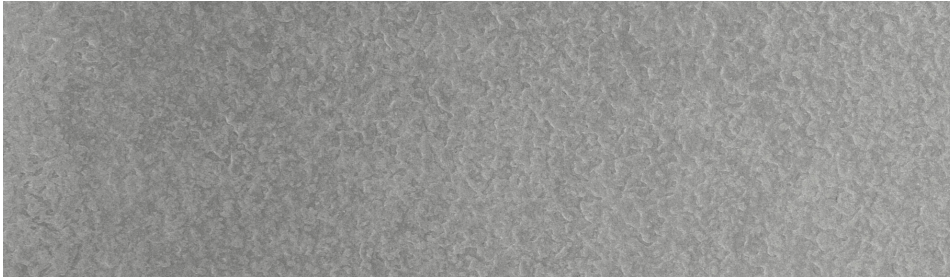
---

Hydra Parking House, Denmark  
Arch.: Kirstine Roepstorff

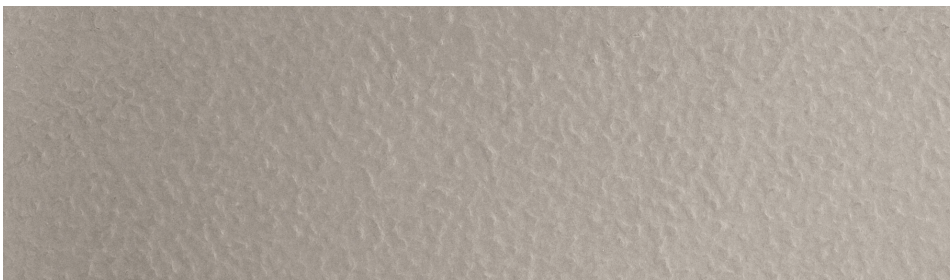
# EQUITONE [lunara]

EQUITONE [lunara] is a through-coloured fibre cement panel with a surface resembling a lunar landscape that demonstrates the natural quality of fibre cement as a material. The special production process makes each panel unique in terms of its colour, texture and surface, with a pattern that is not repeated. The rough, unpolished surface looks as if it was created naturally and invites you to touch it. The material comes in a large panel size and can be transformed into any size or shape in the workshop or on site. No matter what design options you explore, EQUITONE's through-coloured nature guarantees crisp, monolithic details.

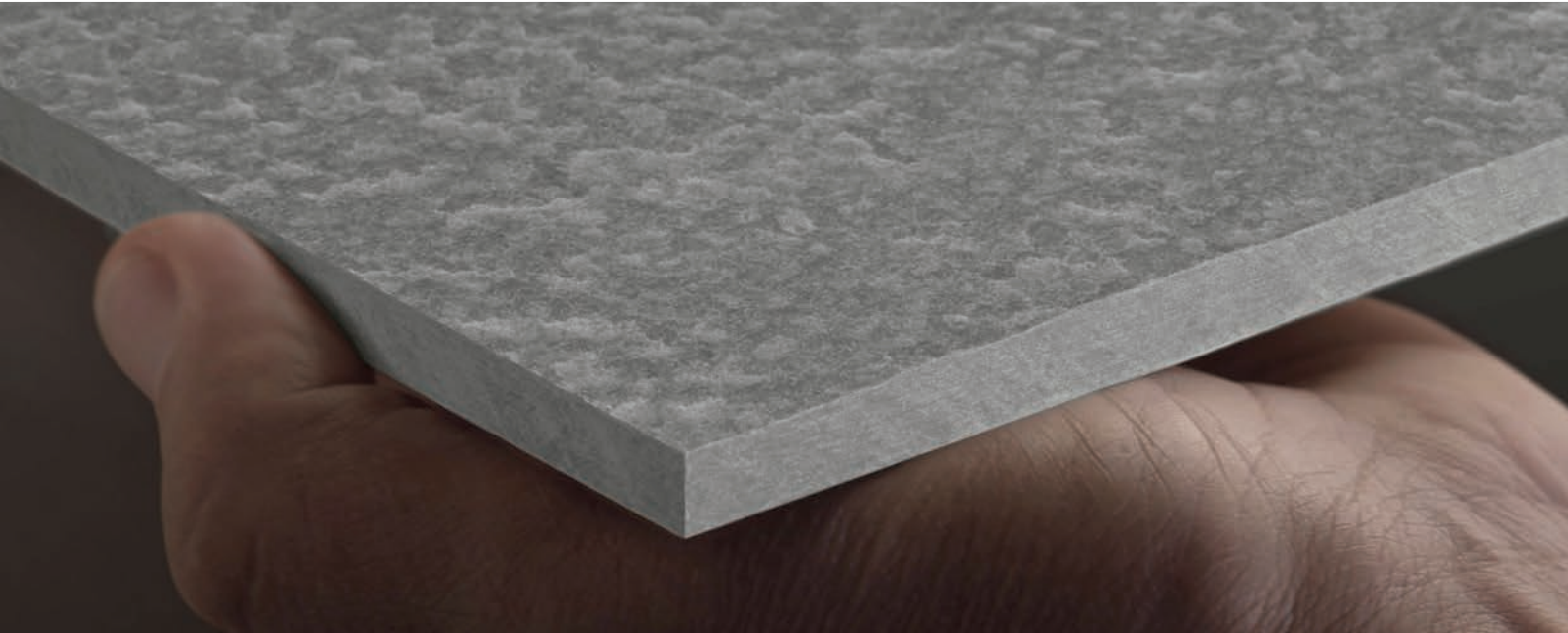
Available in 2 colours



LA20



LA60





EQUITONE [tectiva]

---

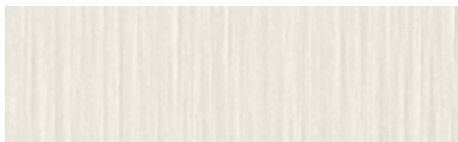


Dale Skole, Norway  
Arch.: ARTEC AS

# EQUITONE [tectiva]

EQUITONE [tectiva] is a through-coloured facade material, characterised by a sanded surface and naturally occurring hues within the material. Every tectiva panel is unique, strongly expressing the raw texture of the core fibre cement material. The material comes in a large panel size and can be transformed into any size or shape in the workshop or on site. No matter what design options you explore, EQUITONE's through-coloured nature guarantees crisp, monolithic details.

Available in 9 colours



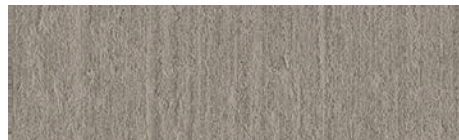
TE90



TE00



TE10



TE60



TE30



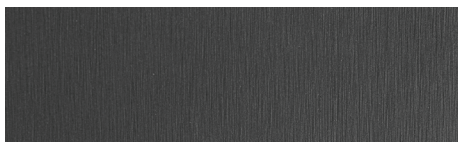
TE40



TE15



TE20

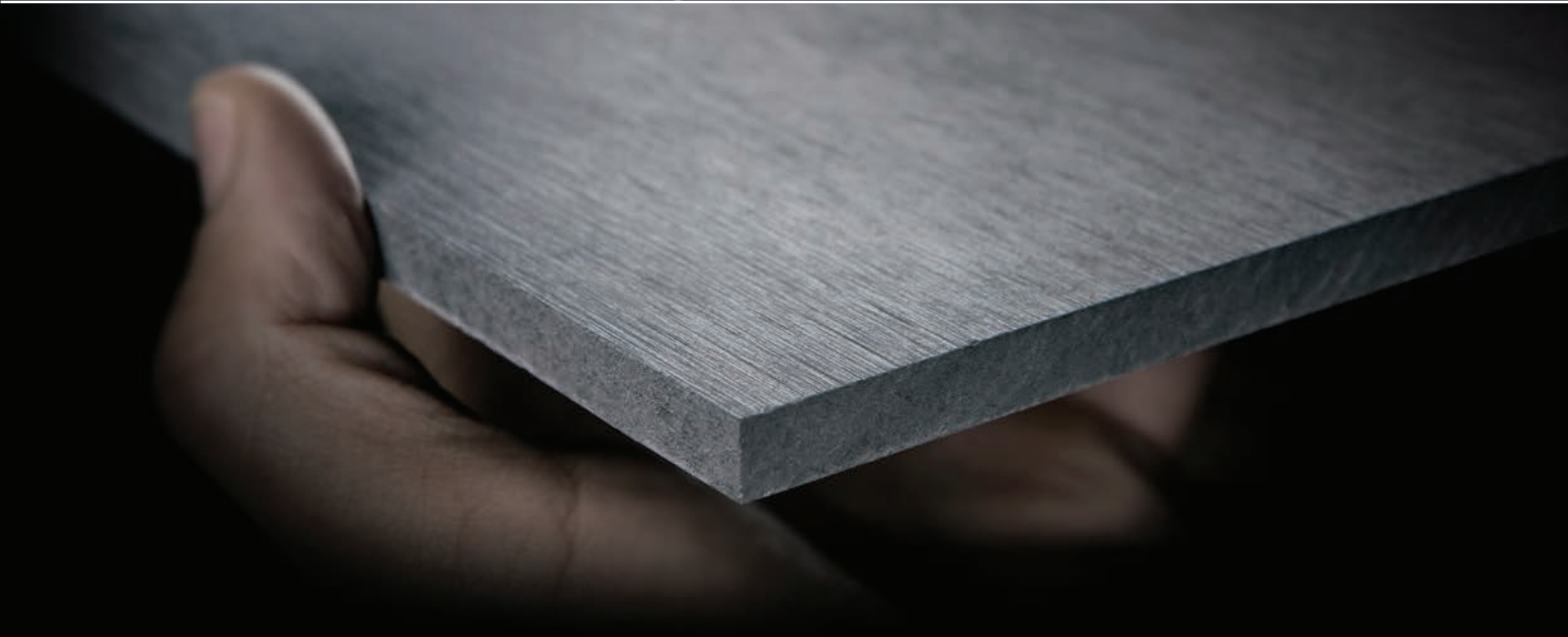


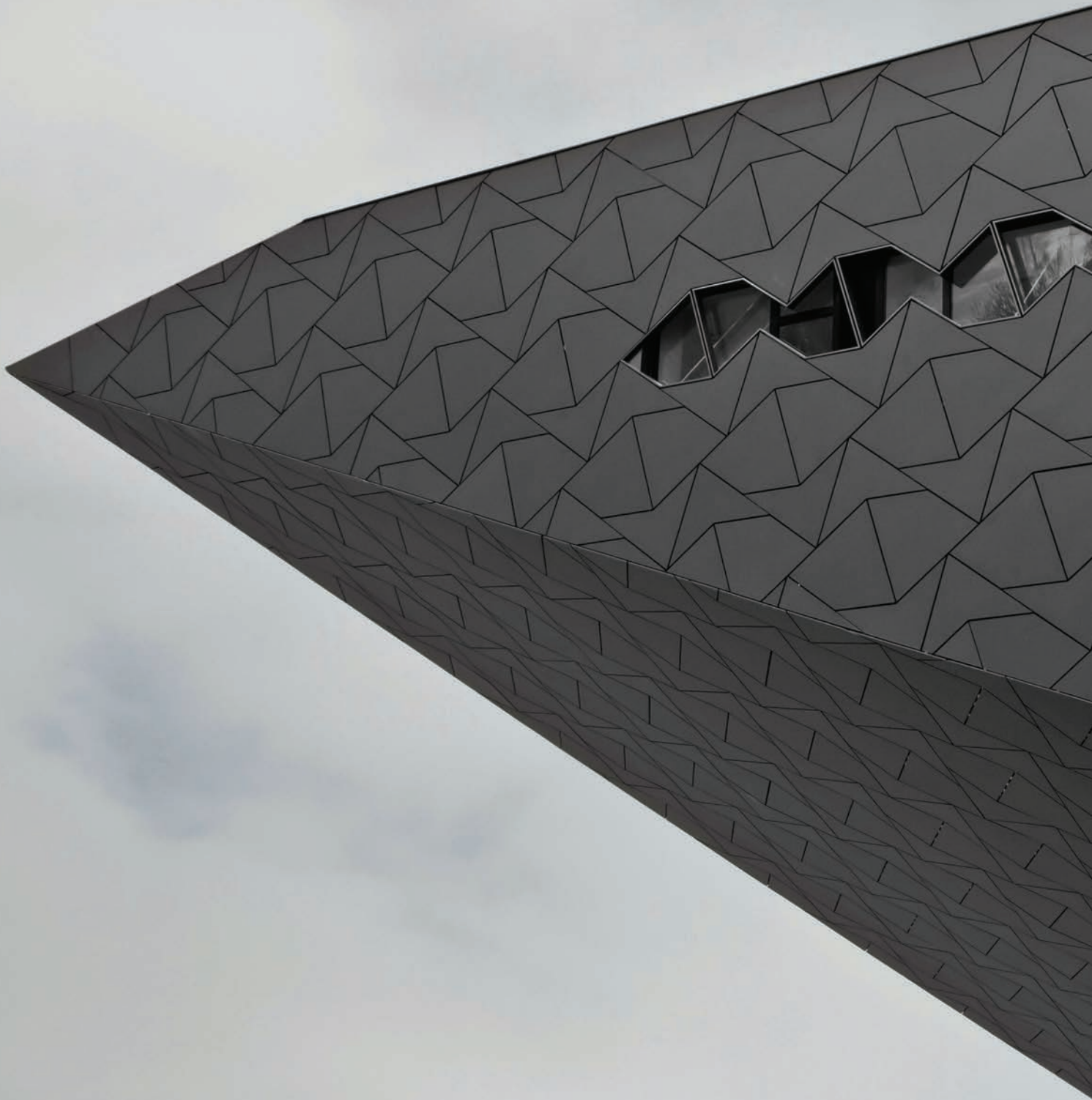
TE85





Finger E CPH Airport, Denmark  
Arch.: Vilhelm Lauritzen Architects, Zeso Architects







EQUITONE [natura]

---

# EQUITONE [natura]

EQUITONE [natura] is a through-coloured facade material. Every EQUITONE [natura] panel is unique, subtly displaying the raw texture of the core fibre cement material. The material comes in a large panel size and can be transformed into any size or shape in the workshop or on site. No matter what design options you explore, EQUITONE's through-coloured nature guarantees crisp, monolithic details.

Available in 27 colours



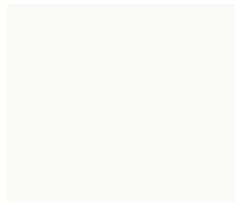
Special colours



# EQUITONE [pictura]

EQUITONE [pictura] is a fibre cement facade material with an ultra matt architectural finish. Thousands of custom-matched matt project colours are available on request. The material comes in a large panel size and can be transformed into any size or shape in the workshop or on site. The material can also be perforated or printed. No matter what design options you explore, EQUITONE material is ideal for crisp detailing.

Available in 20 colours (other colours on request, subject to minimum order quantities.)



PW141



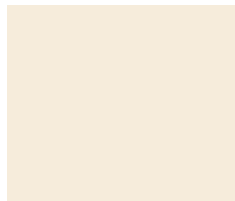
PG243



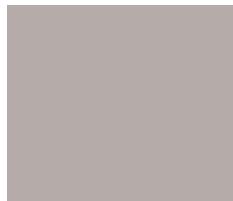
PG241



PA041



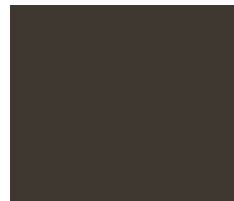
PW841



PG843



PG844



PA944



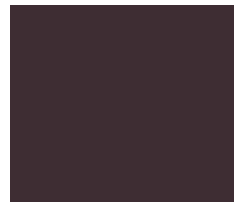
PG542



PG546



PG444



PG342



PG642



PG545



PG443



PG341



PG641



PG544



PG442



PG742

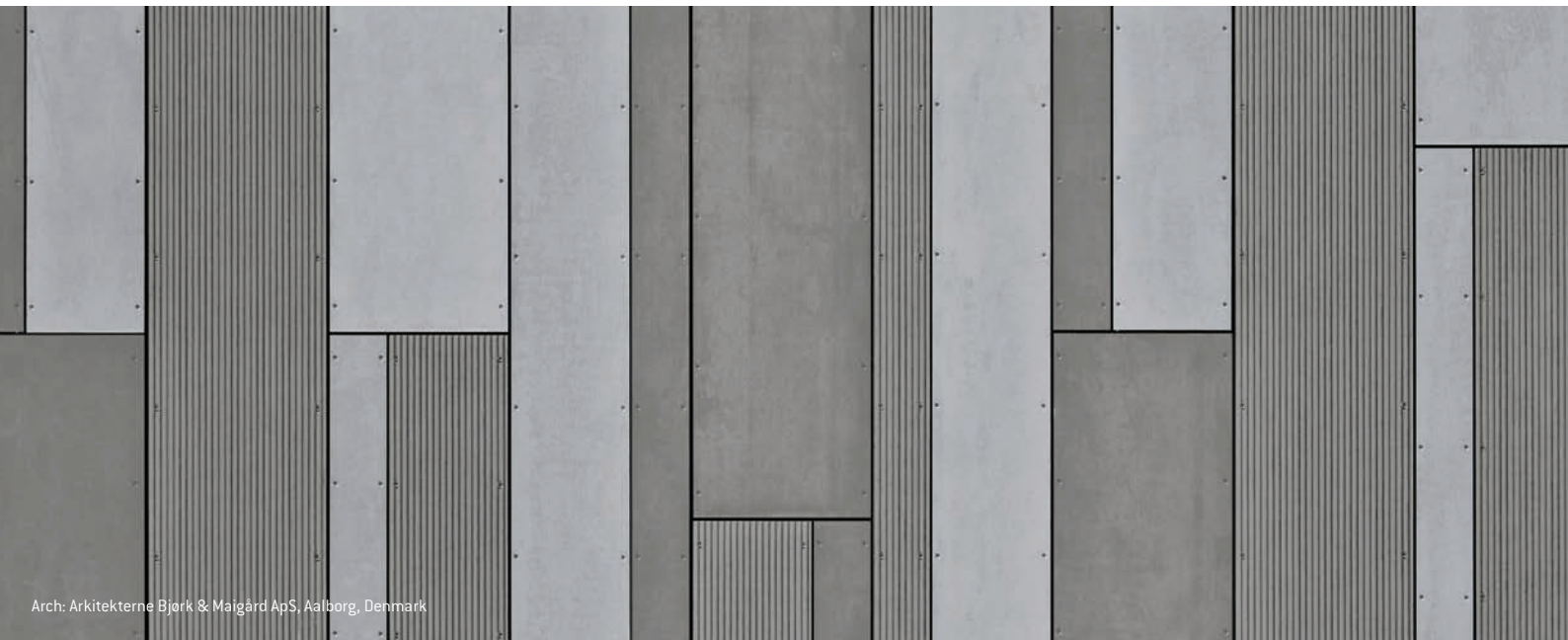


This document is protected by international copyright laws. Reproduction and distribution in whole or in part without prior written permission is strictly prohibited. EQUITONE and logos are trademarks of Etex NV or an affiliate thereof. Any use without authorisation is strictly prohibited and may constitute a criminal offence.



# **EQUITONE**

Fibre cement facade materials



Arch: Arkitekterne Bjørk & Maigård ApS, Aalborg, Denmark

[www.equitone.com](http://www.equitone.com)

Etex Nordic A/S  
Vendersgade 74 | 7000 Fredericia  
T: +45 7366 1999 | [etexnordic-dk@etexgroup.com](mailto:etexnordic-dk@etexgroup.com)

Etex Norge - Filial af Etex Nordic A/S  
Kveldroveien 7 | NO-1407 Vinterbro | Norge  
T: +47 21 09 66 00 | [etexnordic-no@etexgroup.com](mailto:etexnordic-no@etexgroup.com)

Etex Sverige - Filial af Etex Nordic A/S  
Hyllie Boulevard 35 | SE-215 32 Malmö | Sverige  
T: +46 [0]10-331 2600 | [etexnordic-se@etexgroup.com](mailto:etexnordic-se@etexgroup.com)

