

INSTALLATION MANUAL

UNI-Rivet fixing



Disclaimer.

The information in this manual is by no means exhaustive. This document has been developed to assist with the correct preparation and installation of EQUITONE panels. For full and detailed information about storage, handling, preparation, and design and installation requirements of EQUITONE, refer to EQUITONE Planning and Application Guide and other available EQUITONE relevant technical documents.

Refer to EQUITONE Material Safety Data Sheets (MSDS) for more information about health and safety, including common hazards associated with working with EQUITONE, and measures to minimise risk.

The information in this document is correct at the time of issuing. However, due to our committed program of continuous material and system development we reserve the right to amend or alter the information contained in this document without prior notice. Please contact your local EQUITONE sales organisation or visit www.equitone.com to ensure you have the most current version.

This document is supplied in good faith and no liability can be accepted for any loss or damage resulting from its use. Images and construction details contained in this document are not to a specific scale, and are indicative and for illustration purposes only.

This document is protected by International copyright laws. Reproduction and distribution in whole or in part without prior written permission is strictly prohibited. EQUITONE and logos are trademarks of Etex NV or an affiliate thereof. Any use without authorisation is strictly prohibited and may violate trademark laws.

TABLE OF CONTENTS.

TOOLS & ACCESSORIES.

PAGE 3.

STORAGE & HANDLING.

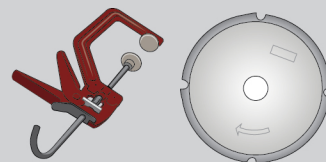
PAGE 4-5.



PANEL CUTTING.

TOOLS, PAGE 6.

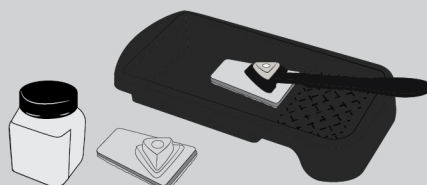
PANEL CUTTING, PAGE 7.



PANEL EDGE TREATMENT.

TOOLS, PAGE 8.

PANEL EDGE TREATMENT, PAGE 9-11.

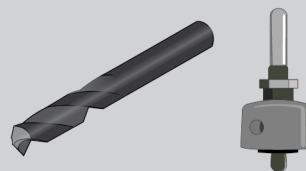


PANEL DRILLING.

TOOLS, PAGE 12.

PANEL DRILLING, PAGE 13.

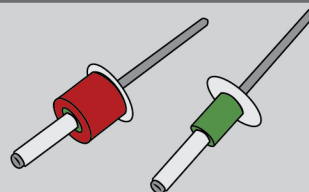
PANEL DRILLING EQUITONE [linea], PAGE 14-16.



UNI-RIVET FIXING.

TOOLS, PAGE 17.

UNI-RIVET FIXING, PAGE 18-22.



VENTILATION.

PAGE 23.



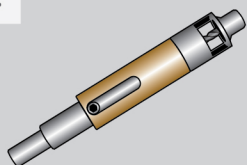
INSTALLATION.

PAGE 24-26.

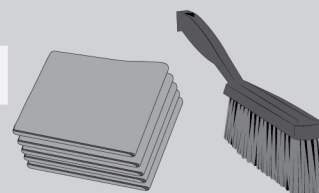


TOOLS & ACCESSORIES.

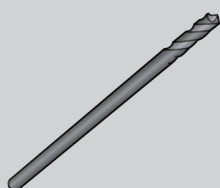
Centralising Tool.



EQUITONE
Care Toolkit.



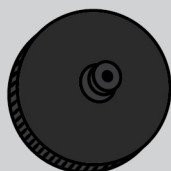
Centralising Tool
Replacement
drill bit
Ø4.1mm.



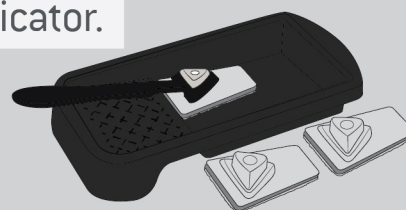
Luko Edge
Sealer.



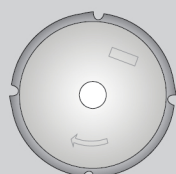
Rivet Setting
Tool.



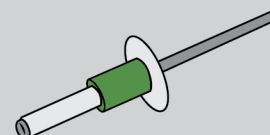
Luko Applicator.



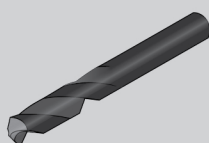
EQUITONE
Fibre Cement
Saw Blade.



UNI-Rivet.



EQUITONE
Fibre Cement
Drill Bit
Ø11mm.



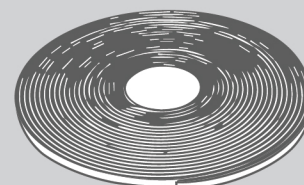
UNI-Rivet
Red/STOP
Spacer.



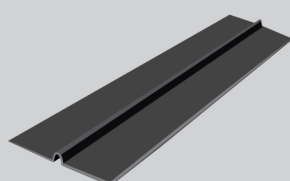
EQUITONE
[linea] LT
Milling Tool
Ø11mm.



Foam Tape.



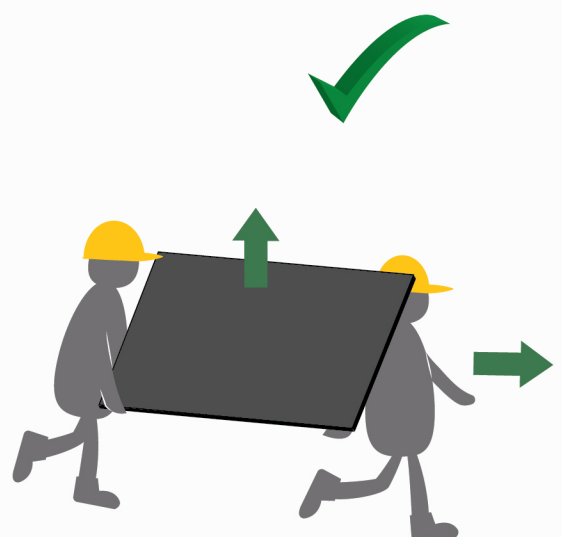
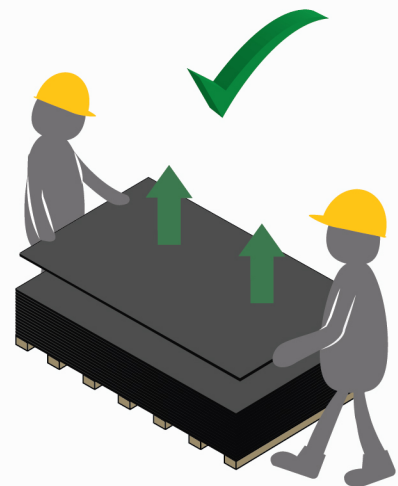
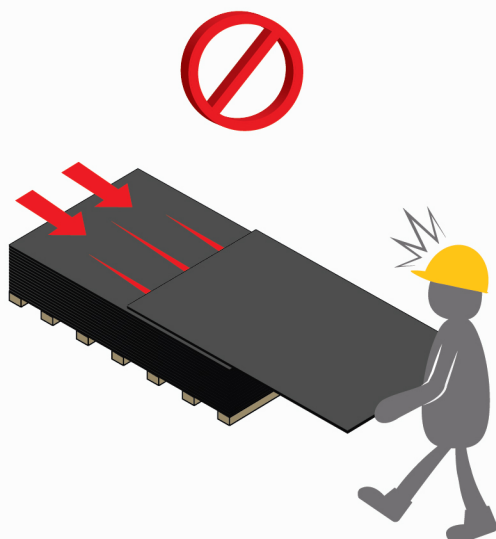
Aluminium
Horizontal
Joint Profile.

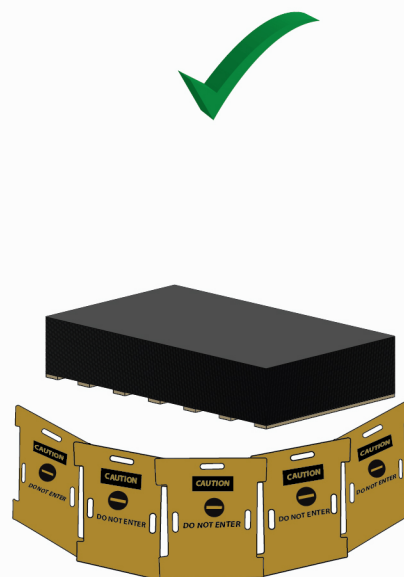
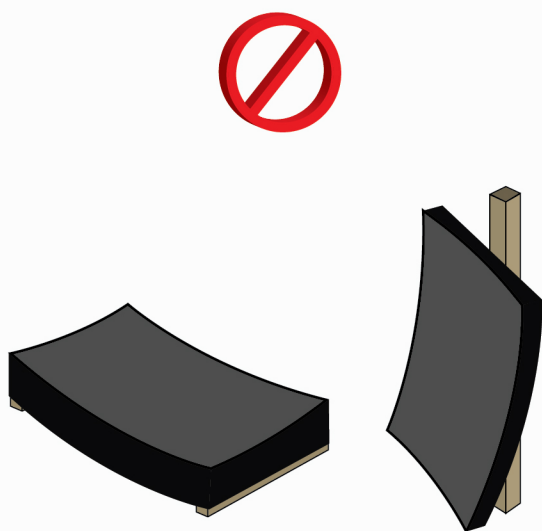
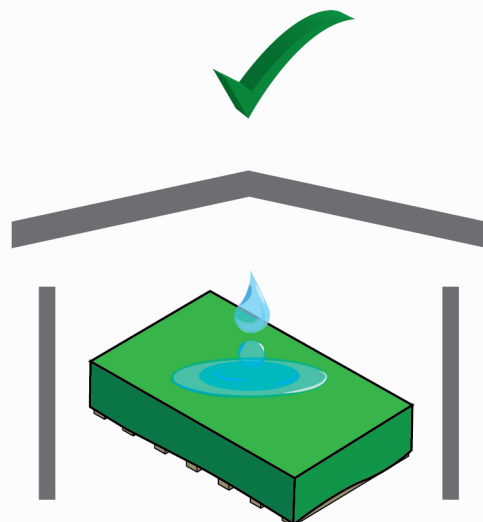
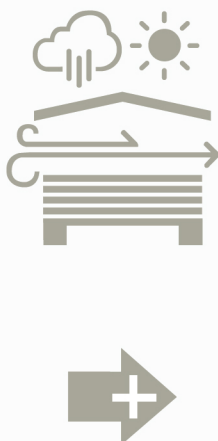
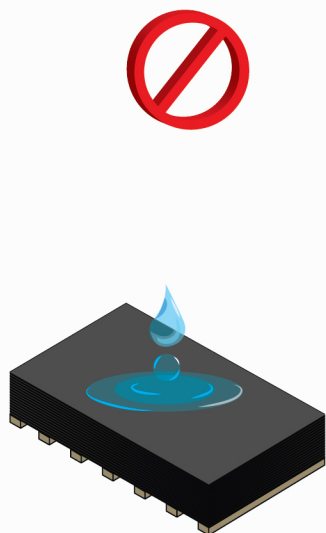


Aluminium
Perforated
Closure.



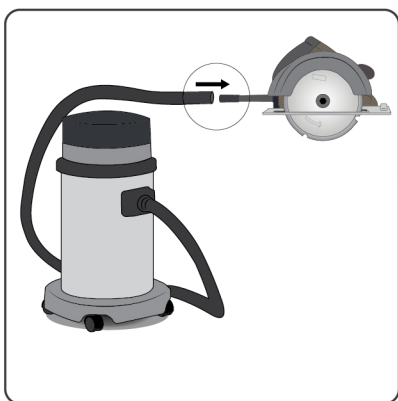
STORAGE & HANDLING.





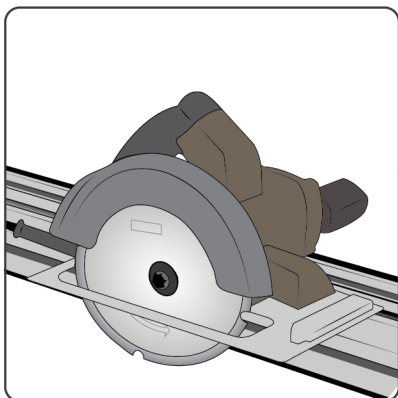
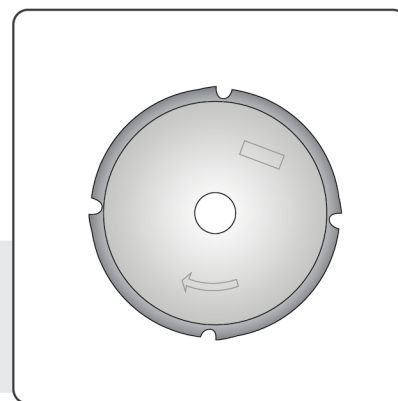
PANEL CUTTING.

TOOLS.



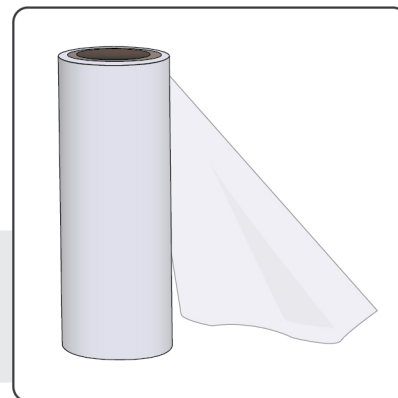
Dust extraction system

EQUITONE fibre
cement saw blade



Circular saw
& Guide rail

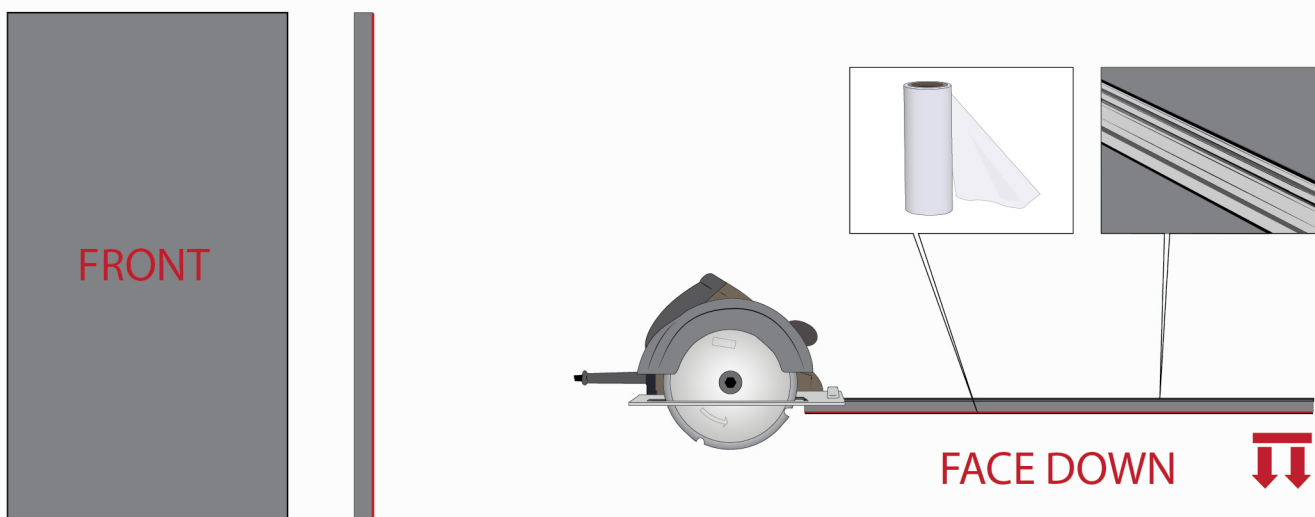
Styrofoam
film



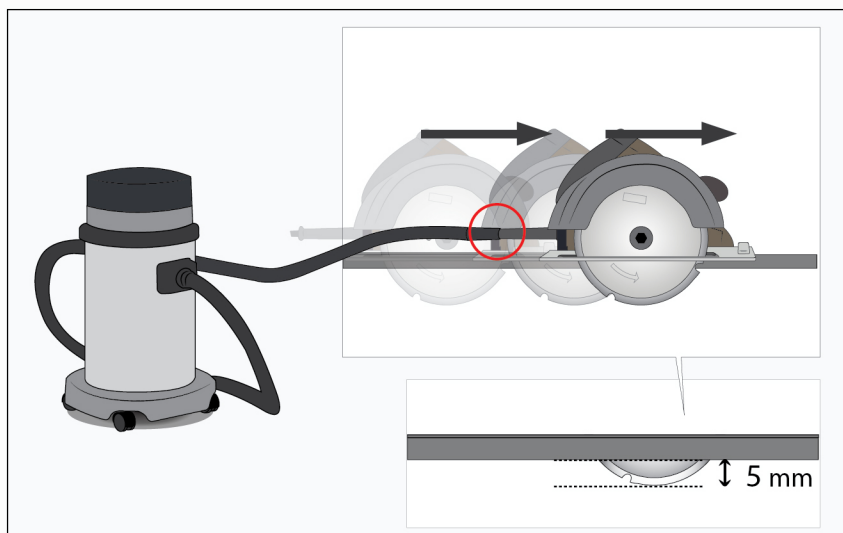
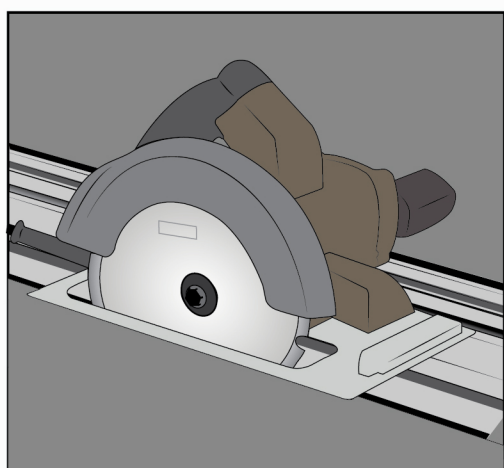
Stable Work Table
With Sacrificial
Board

PANEL CUTTING.

1

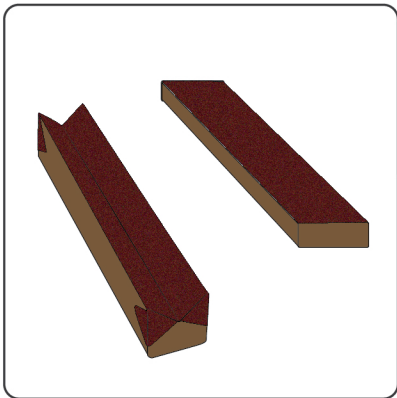


2



PANEL EDGE TREATMENT.

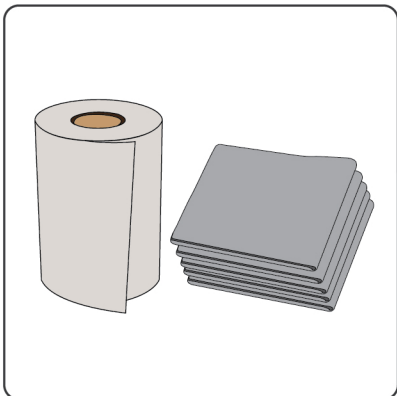
TOOLS.



Sandpaper
(80 Grit)



Soft bristle
brush



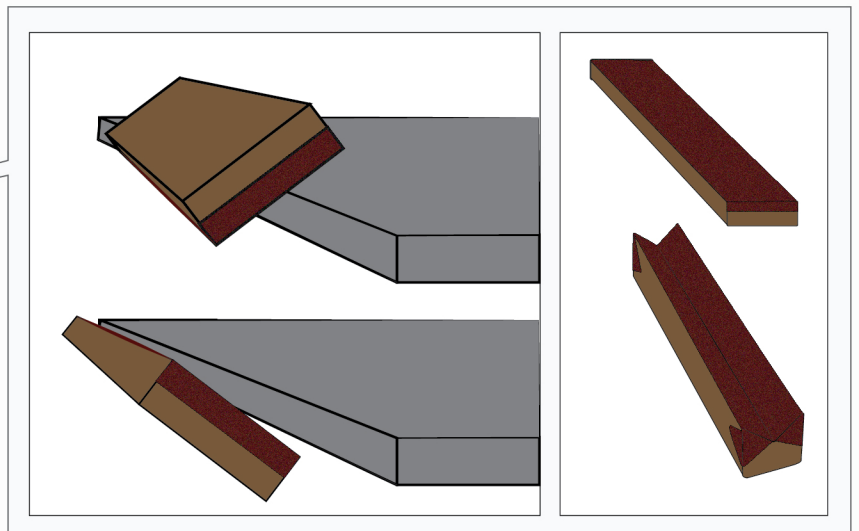
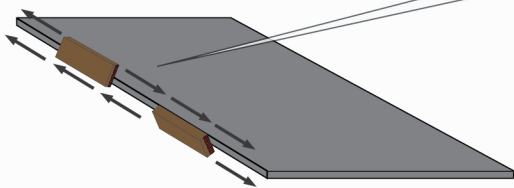
Micro fibre cloth,
paper towel



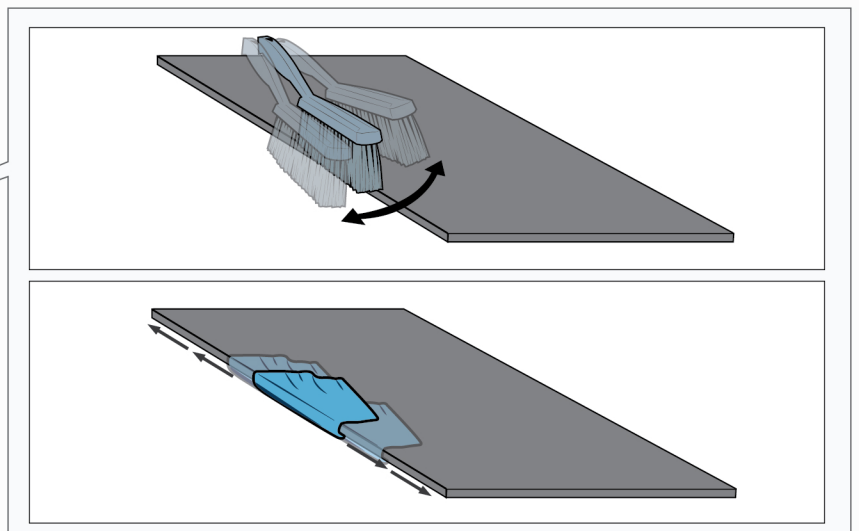
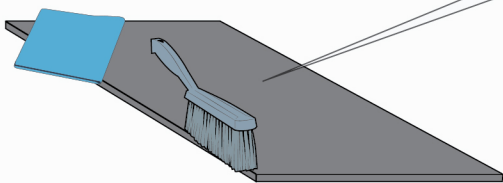
LUKO edge sealer
& applicator
*For EQUITONE
[natura] & [natura] PRO

PANEL EDGE TREATMENT.

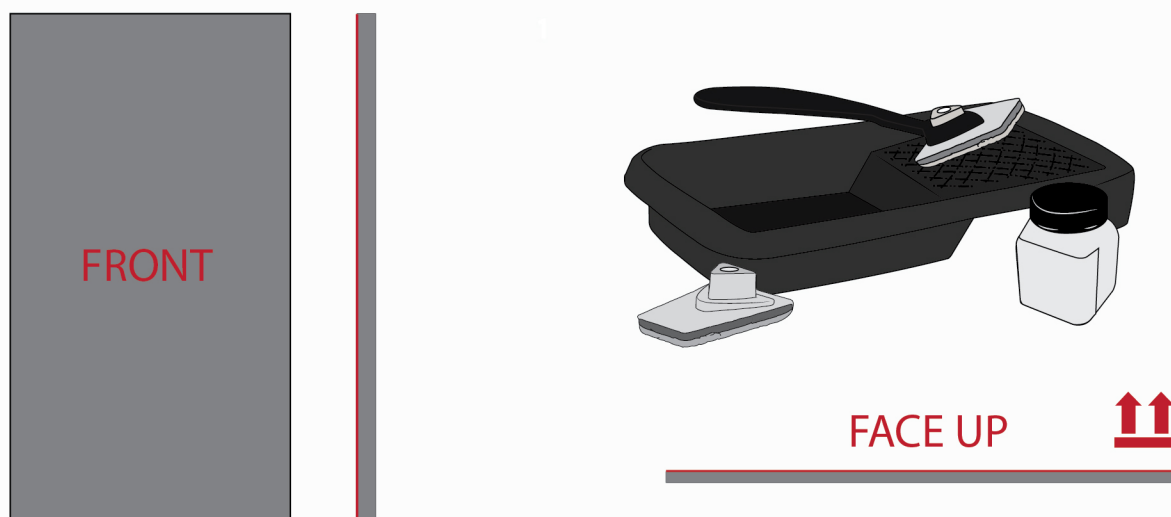
1



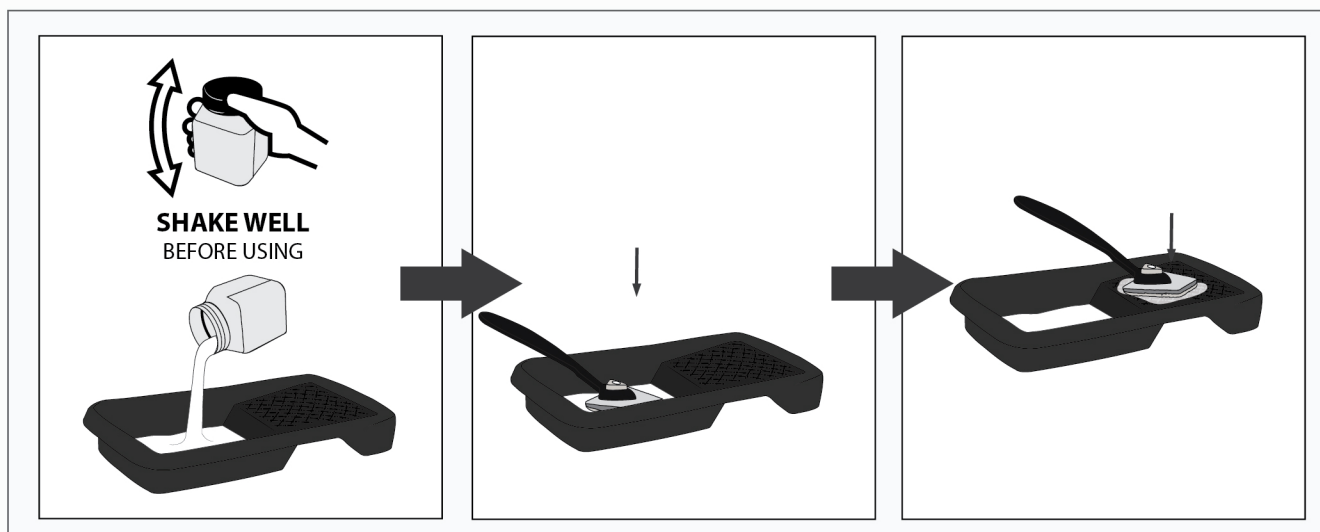
2



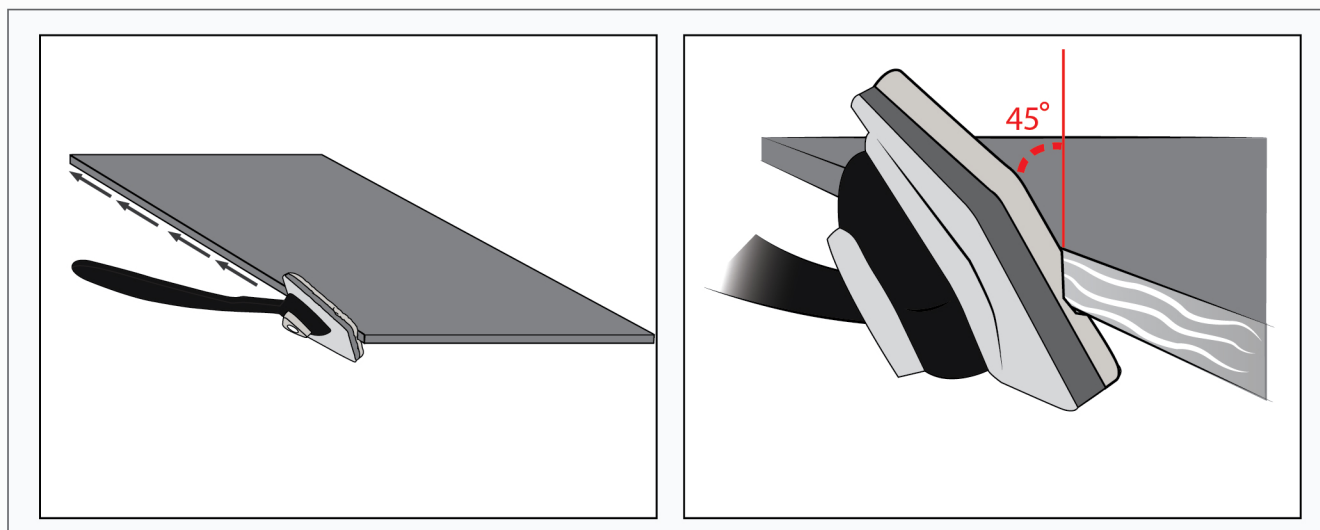
3 *Only applicable to EQUITONE [natura] & [natura] PRO



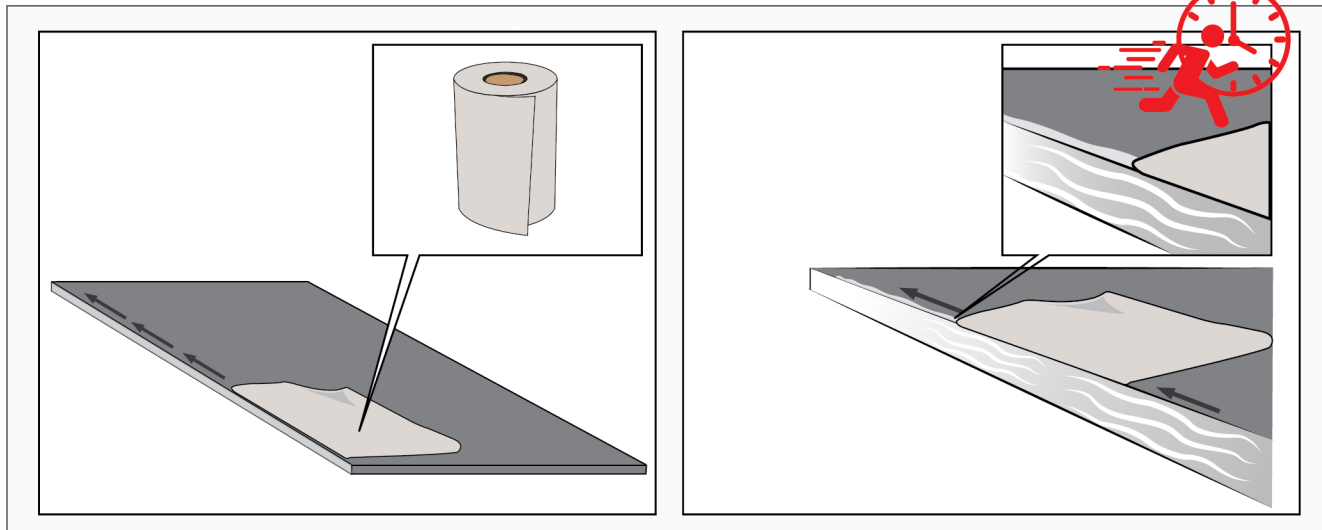
4 *Only applicable to EQUITONE [natura] & [natura] PRO



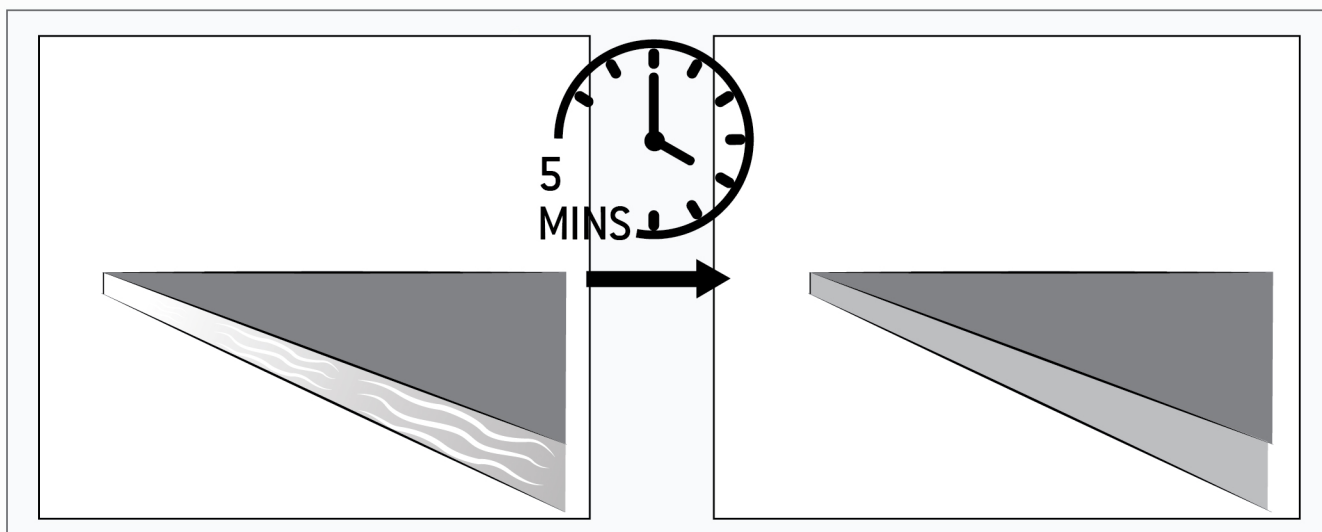
5



6

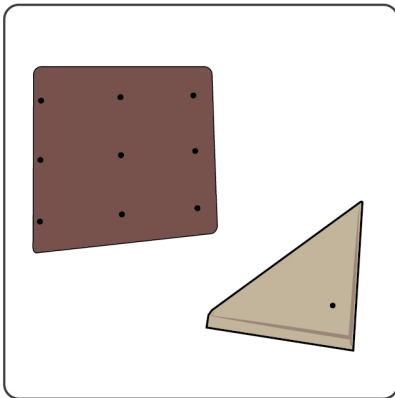


7



PANEL DRILLING.

TOOLS.

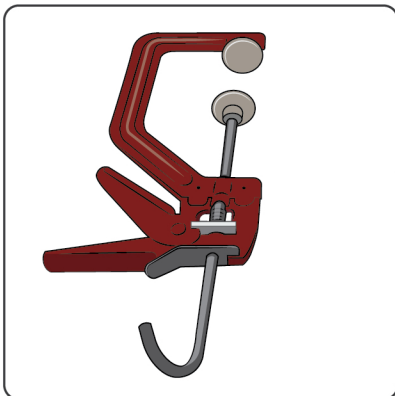


Hole Template
(Optional)

EQUITONE Drill Bit
11mm Diameter

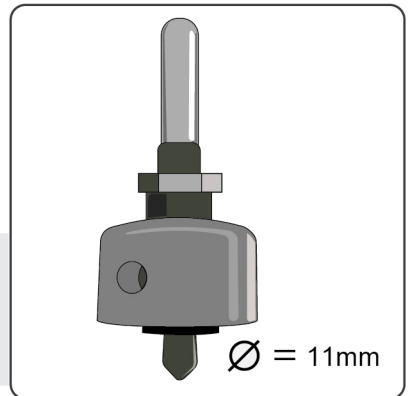


Ø = 11mm



G Clamp
(Optional)

EQUITONE [linea]
LT milling tool
11mm Diameter

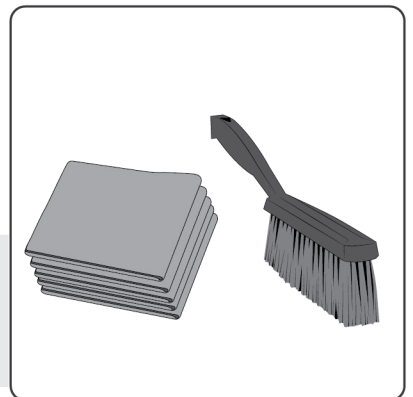


Ø = 11mm

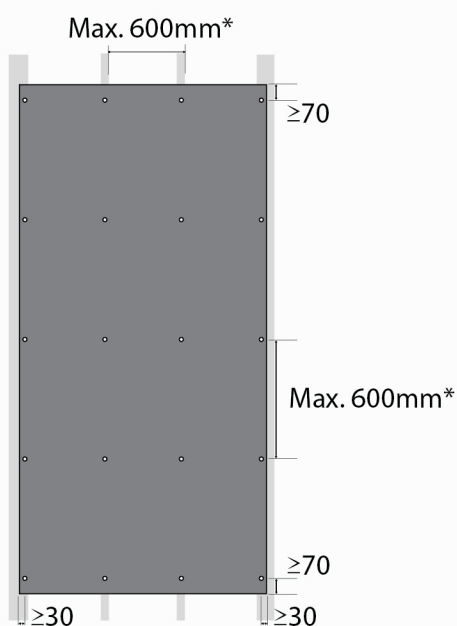
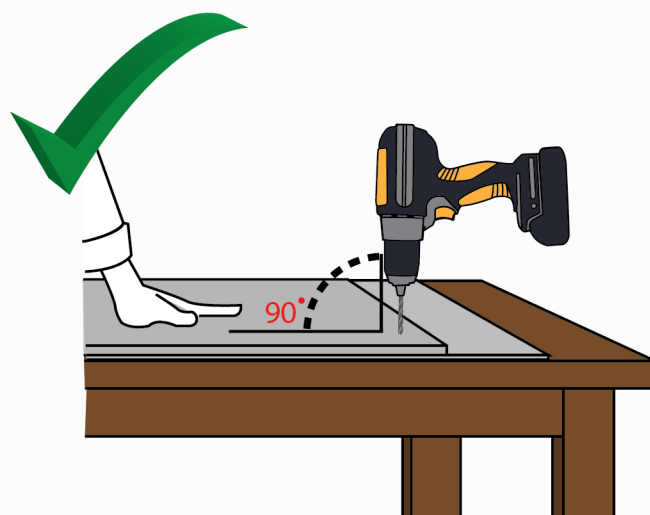
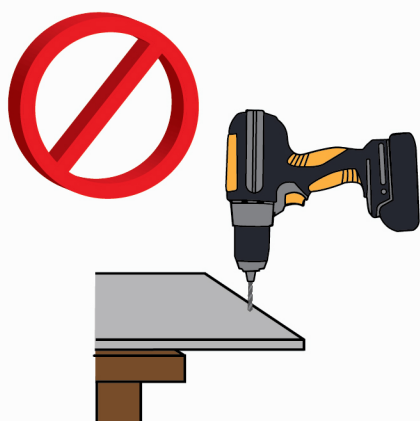


Stable Work Table
With Sacrificial
Board/Fibre Cement

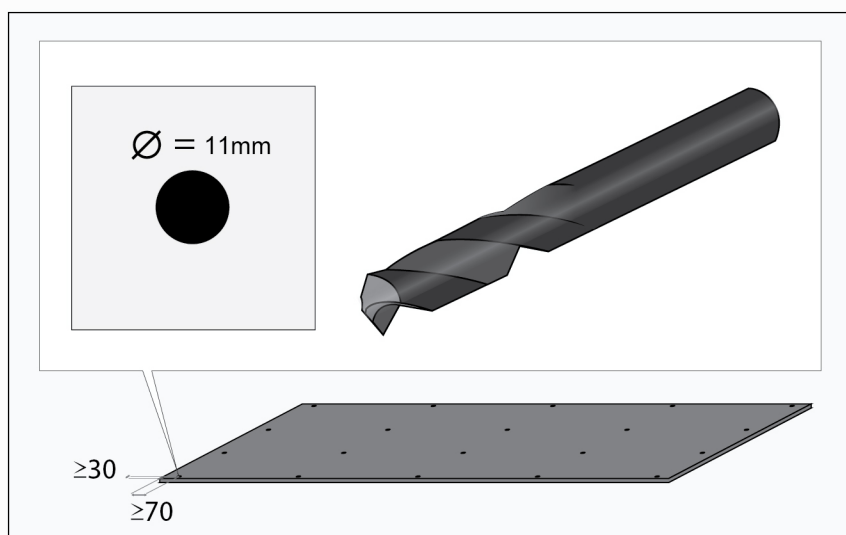
Micro Fibre Towel
& Brush

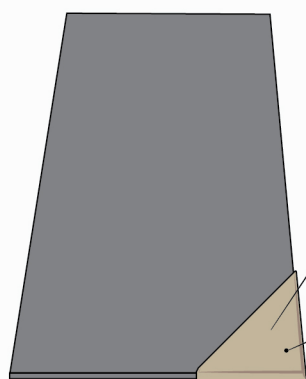
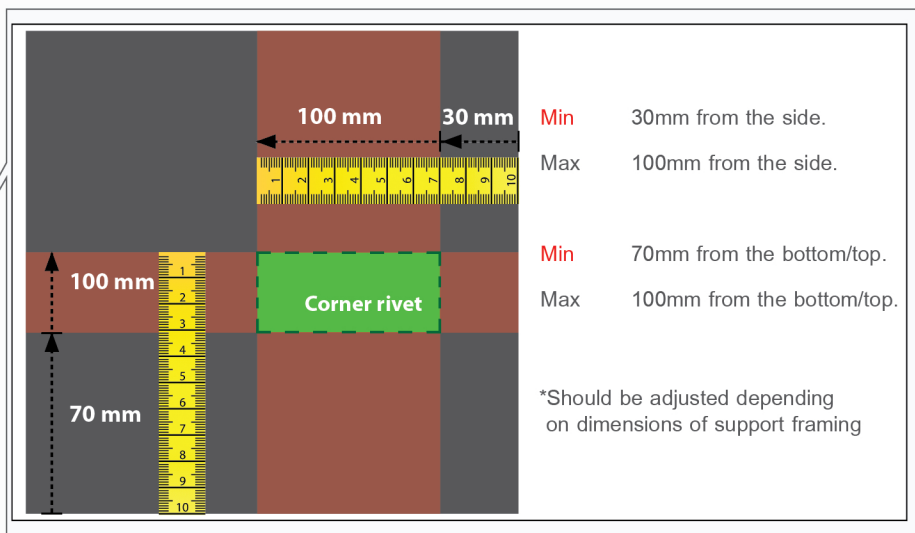
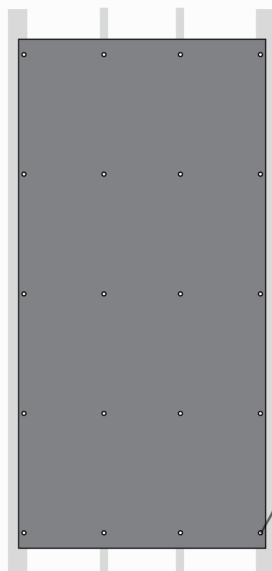


PANEL DRILLING.

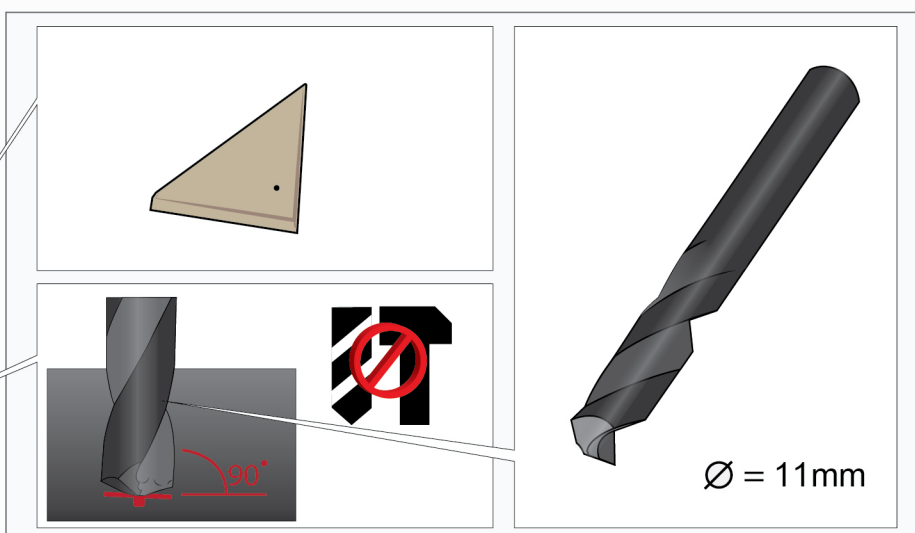


*The distance reduces on higher wind load requirements
Max. 400mm for ceiling/soffit applications.



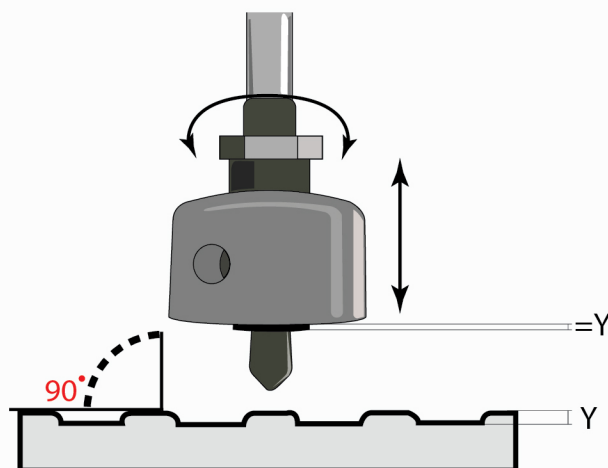
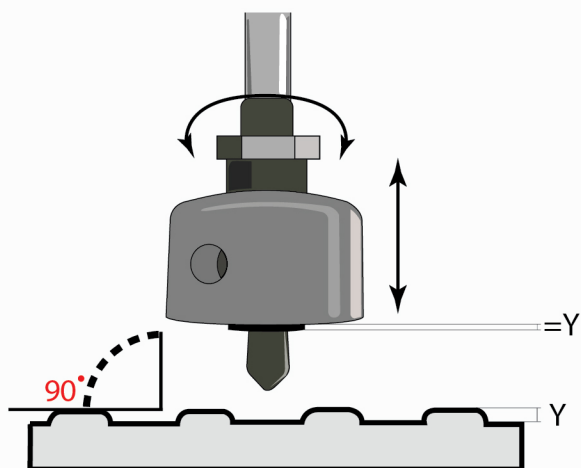
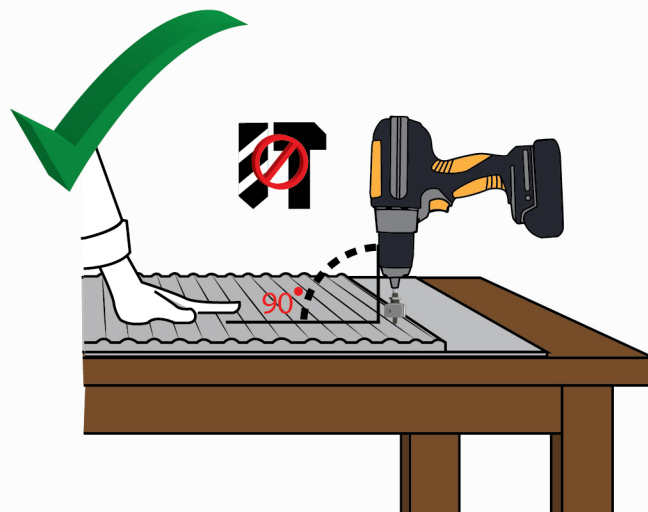


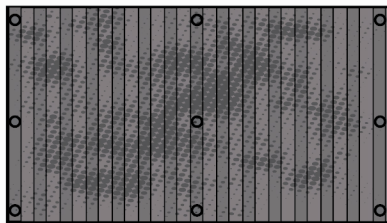
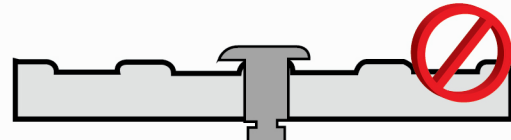
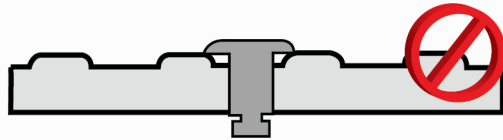
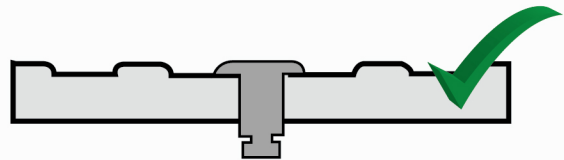
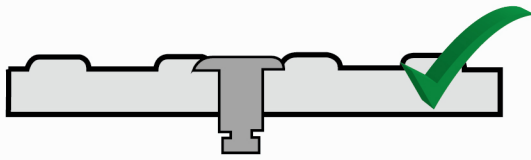
↑↑ FACE UP



PANEL DRILLING.

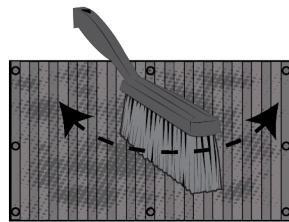
EQUITONE [linea]



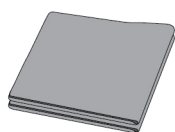
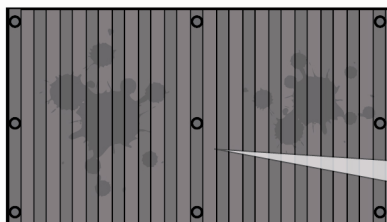
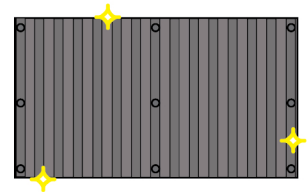


Brush

1

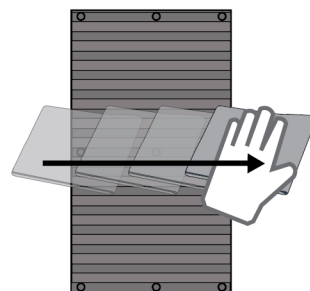


2

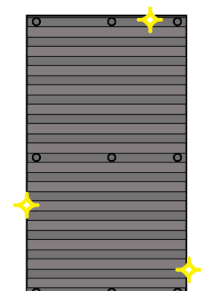


Micro fibre cloth

3



4



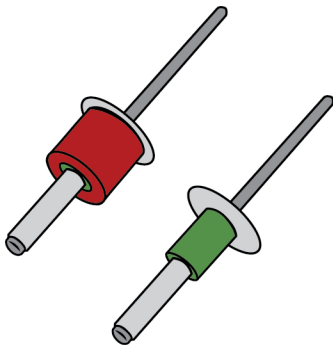
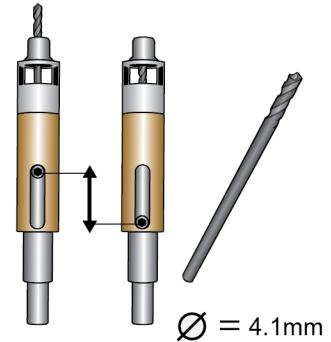
UNI-RIVET FIXING.

TOOLS.



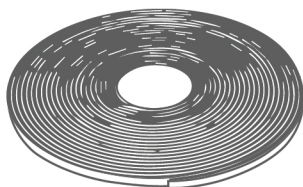
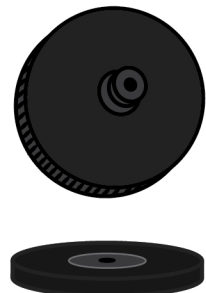
Cordless Drill

Centralising Tool



UNI-Rivets

Rivet Setting Tool

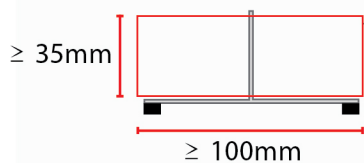
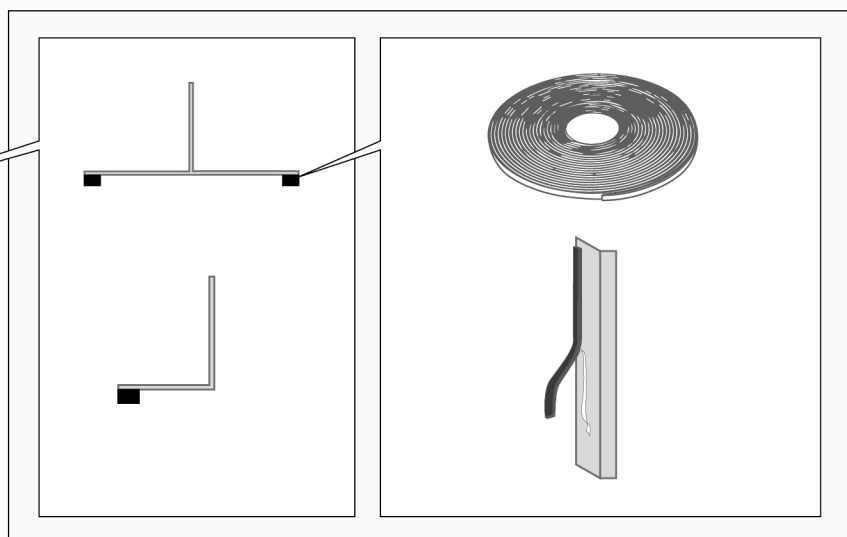
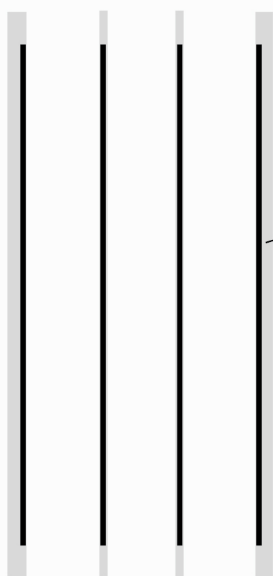


Foam Tape

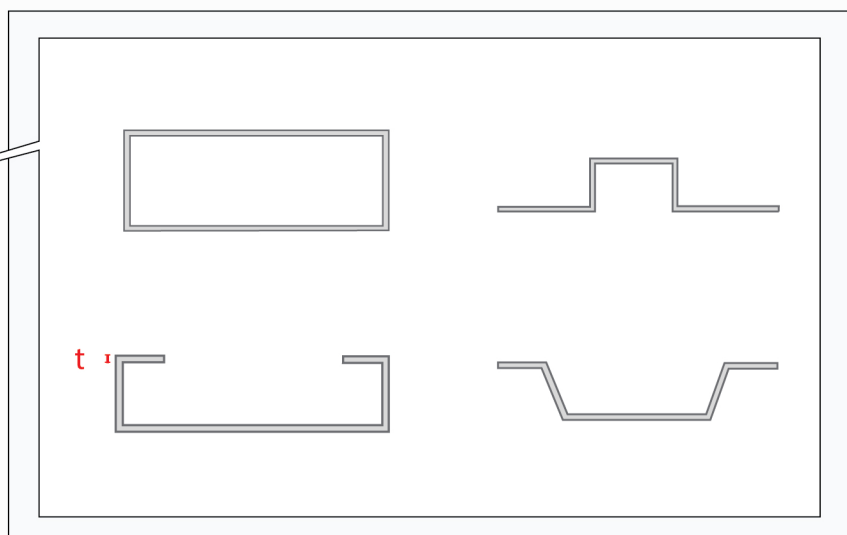
Rivet Gun

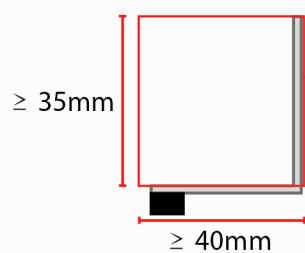


UNI-RIVET FIXING.



t:
Galv. Steel : ≥ 1.15 BMT
Aluminium : ≥ 1.7 BMT

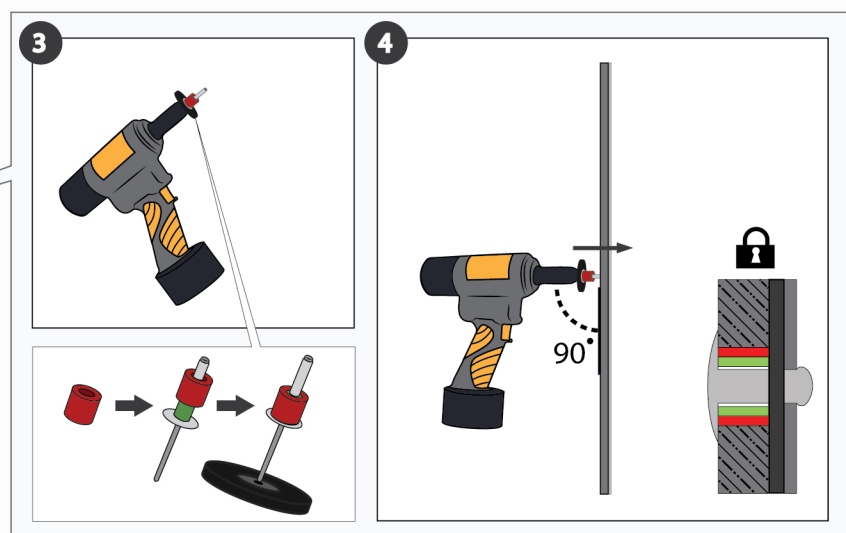
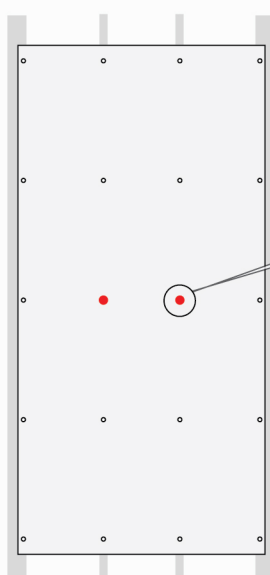
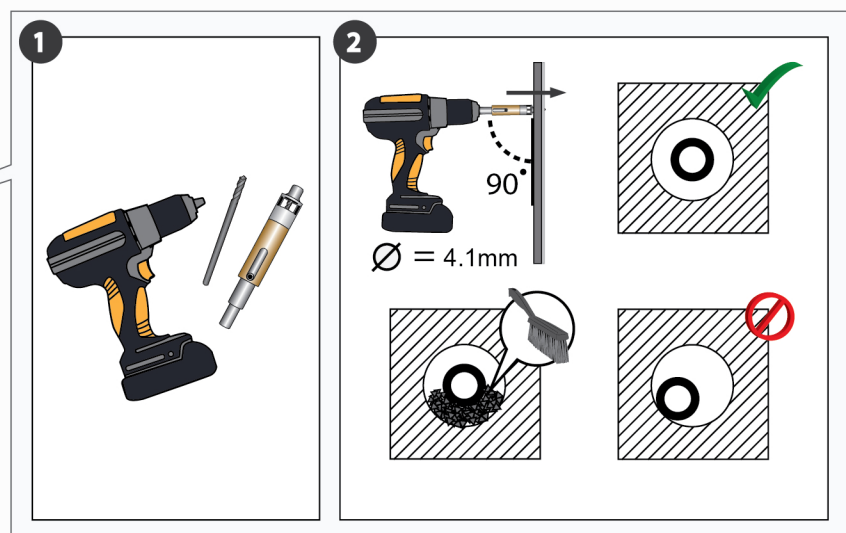
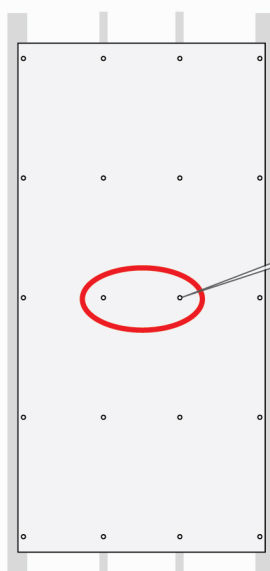
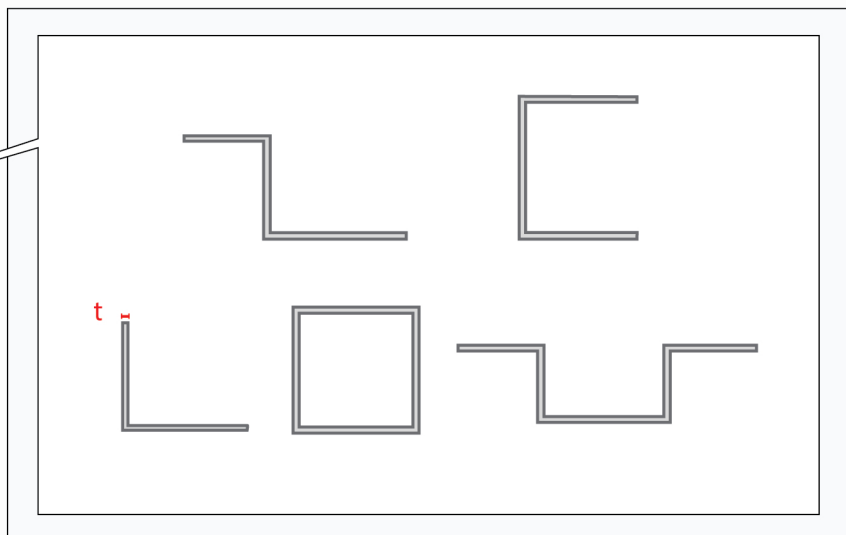


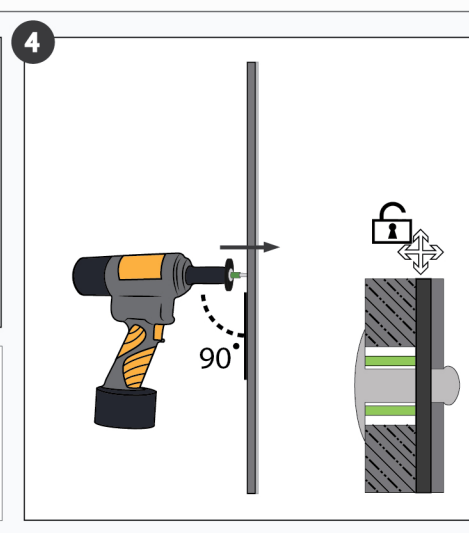
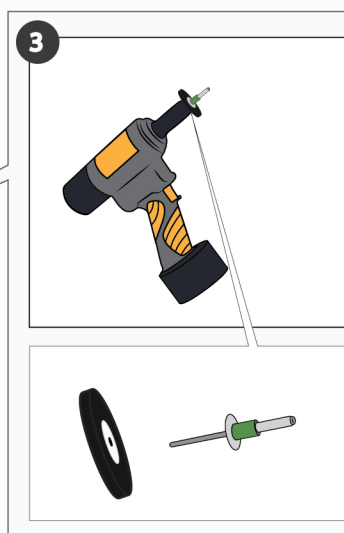
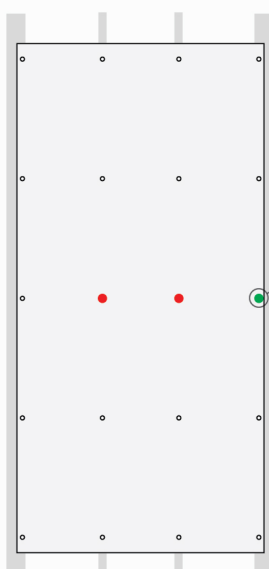
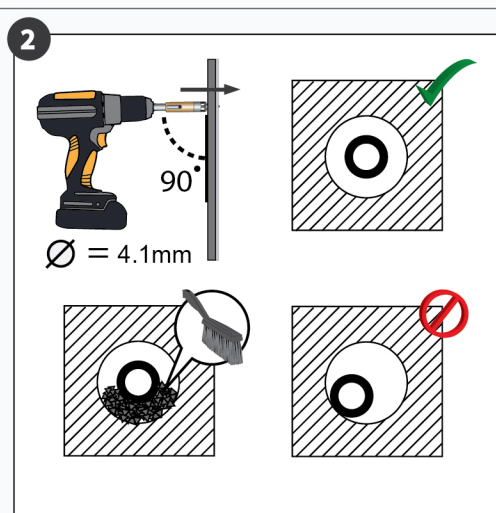
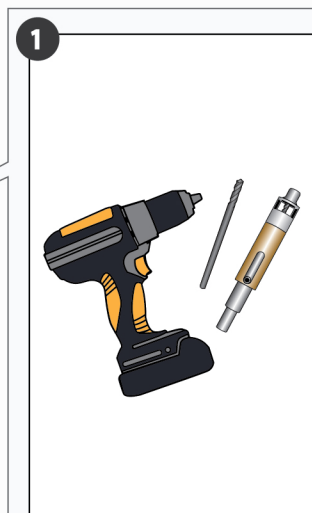
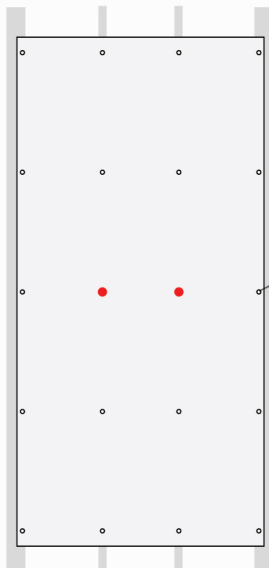


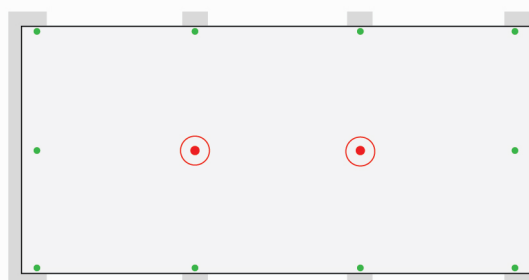
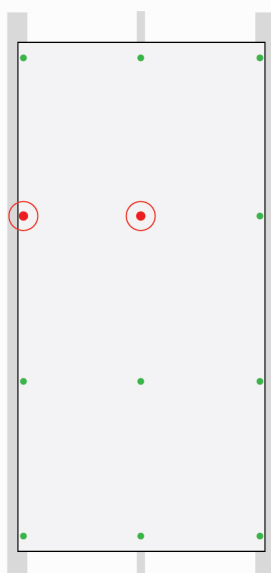
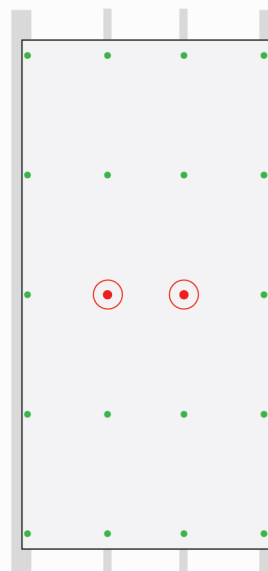
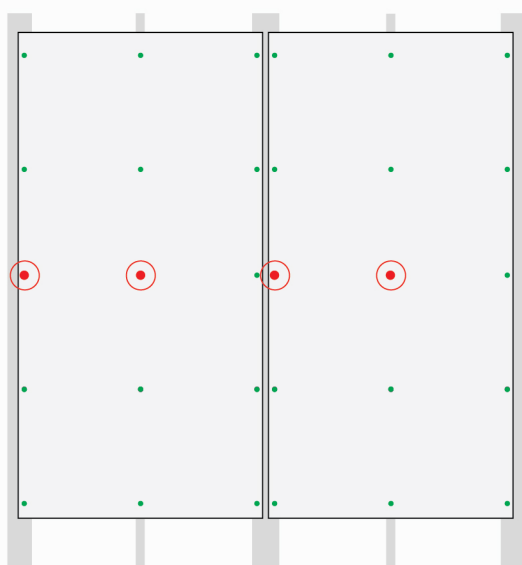
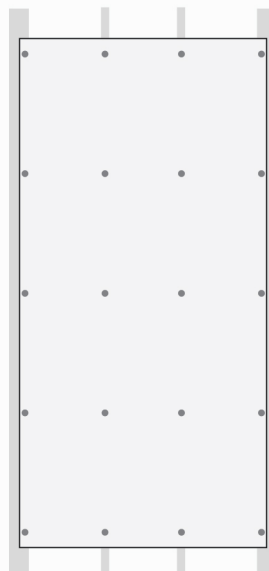
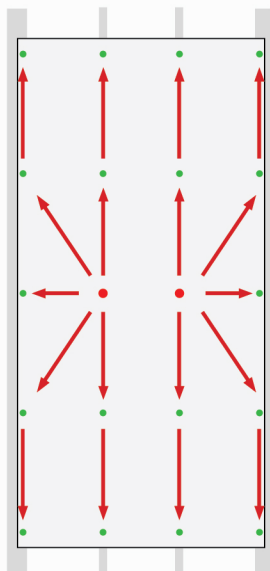
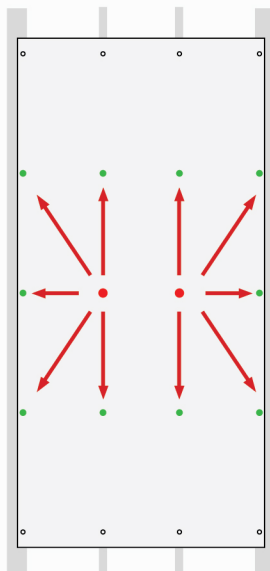
t:

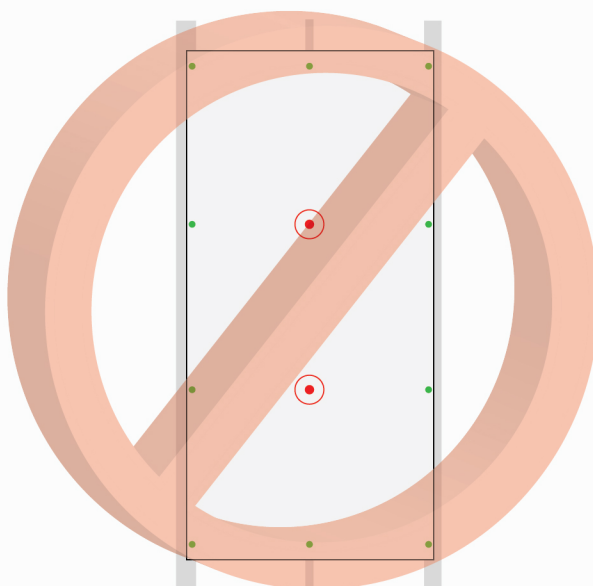
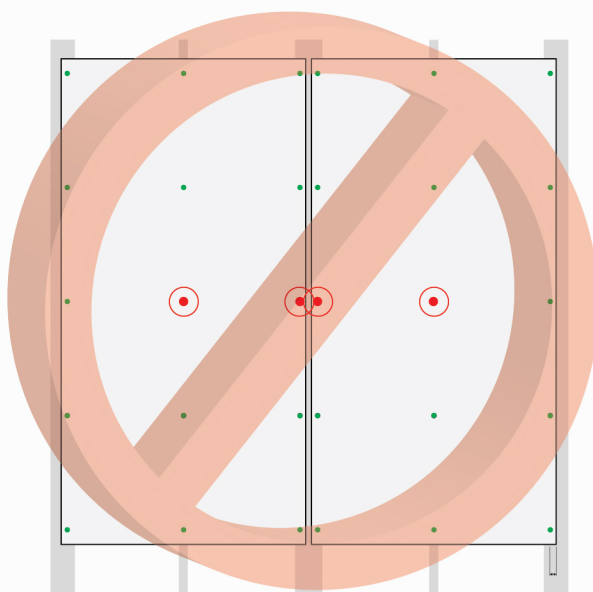
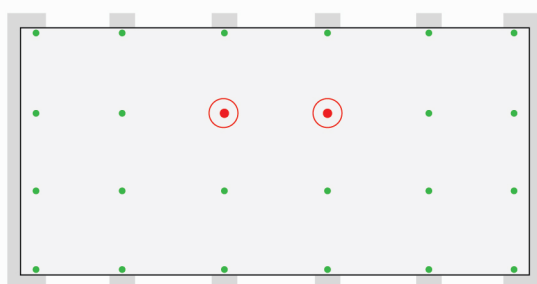
Galv. Steel : ≥ 1.15 BMT

Aluminium : ≥ 1.7 BMT

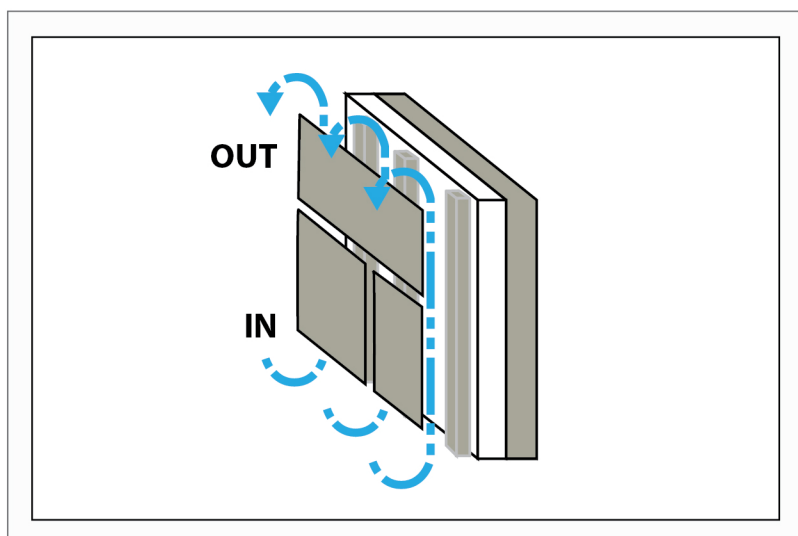






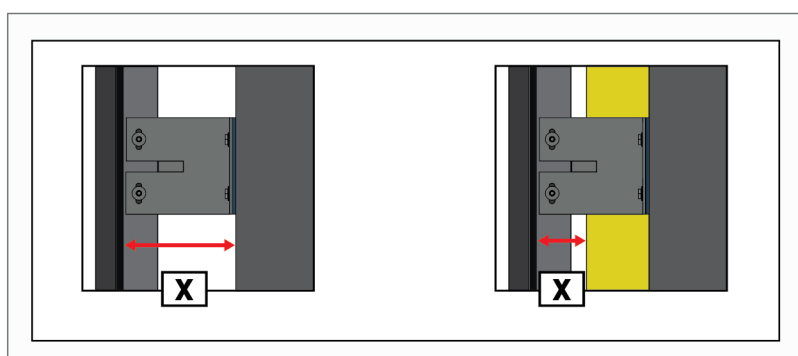


VENTILATION.

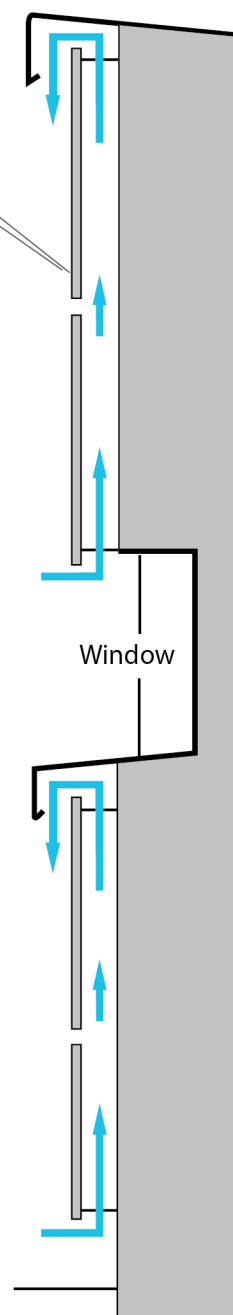


$$IN \geq OUT$$

$$MIN. 10mm \geq MIN 10mm \\ (2 \times IN)^* \geq$$



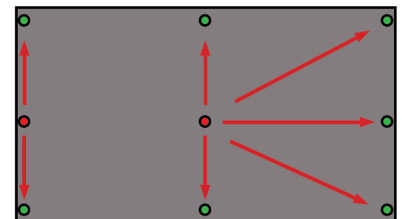
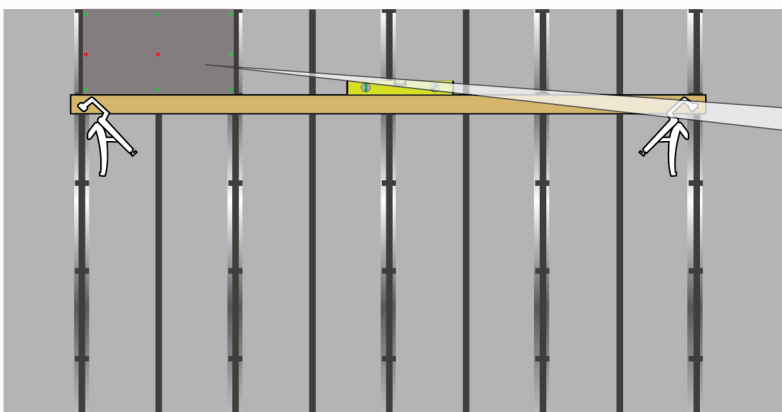
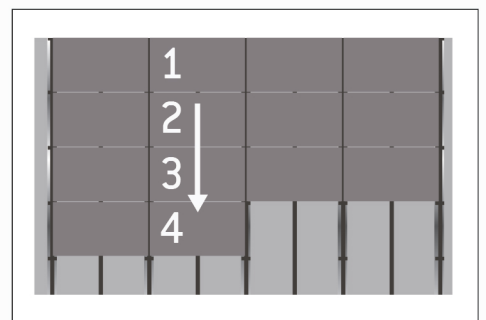
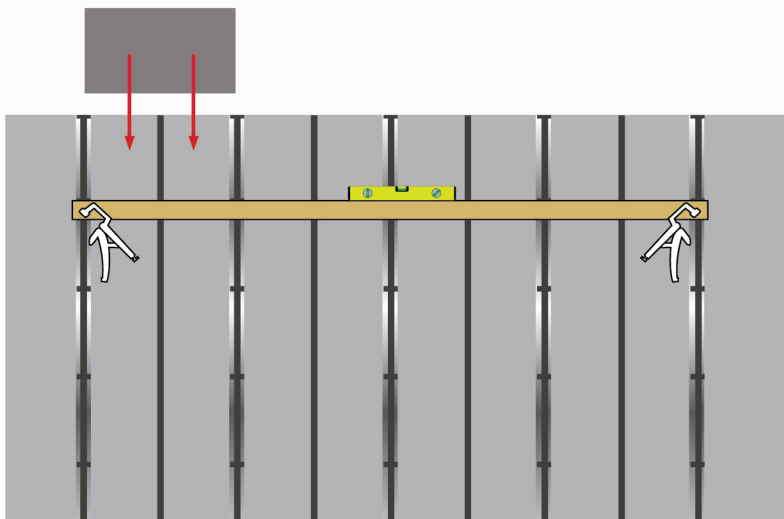
$$X \geq 20mm^{**}$$

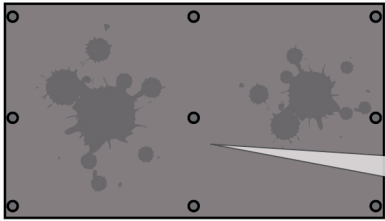


*If perforated closure profile is used

**Cavity space X increases as the height of the facade & vertical distance IN & OUT increases

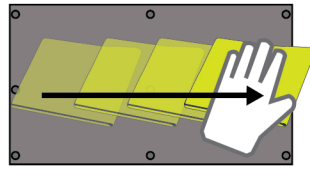
INSTALLATION.



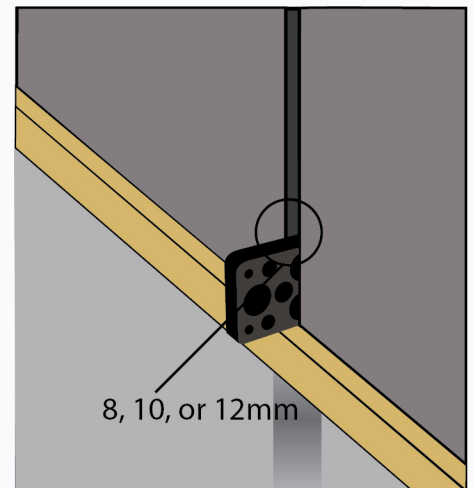
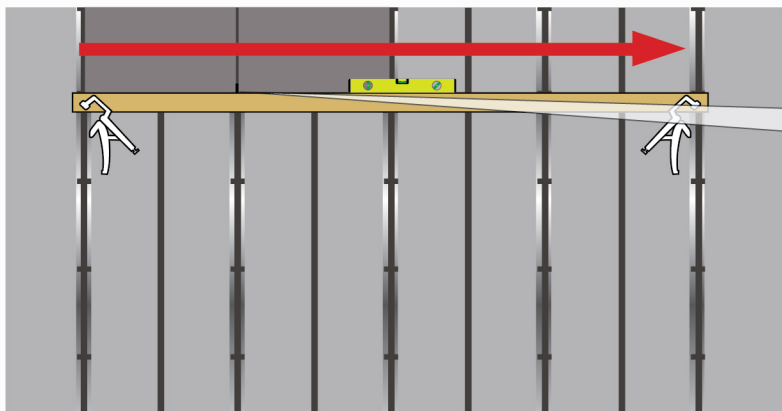
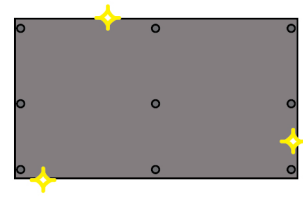


Micro fibre cloth

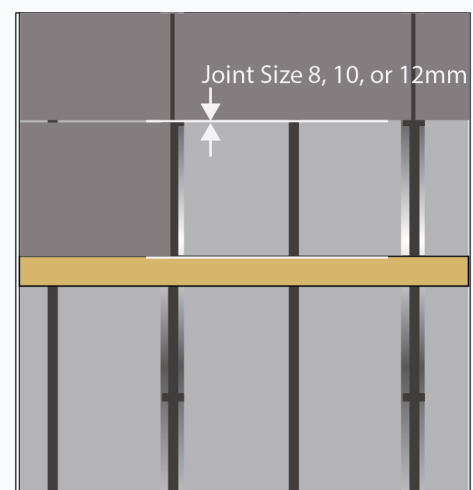
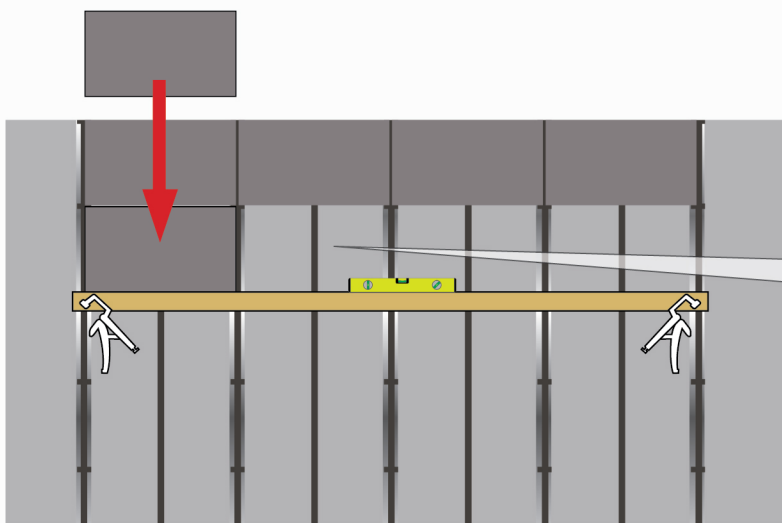
1



2

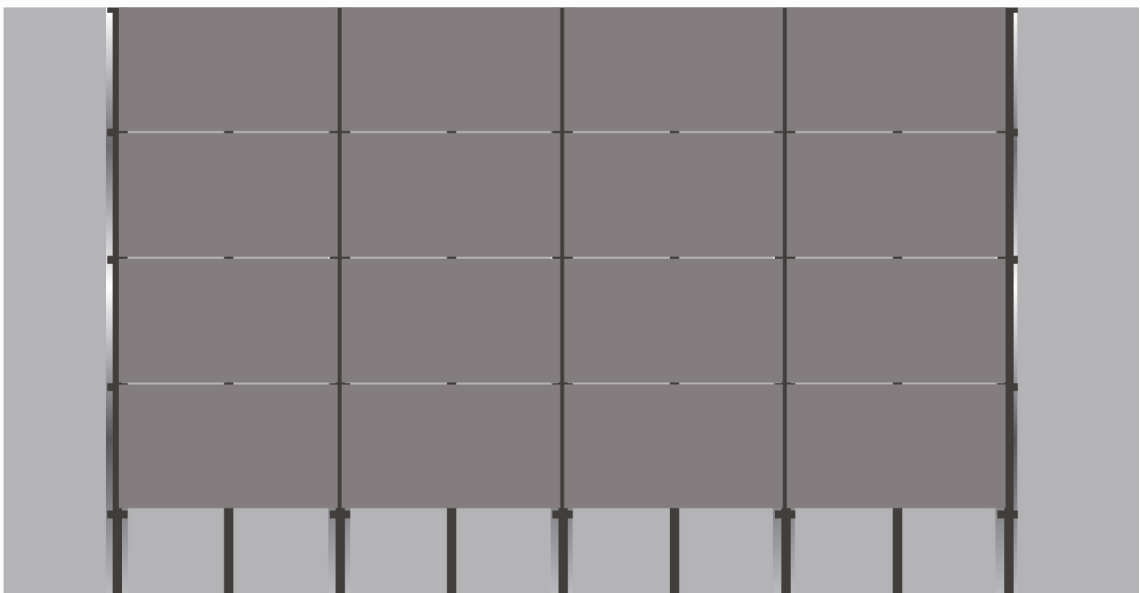
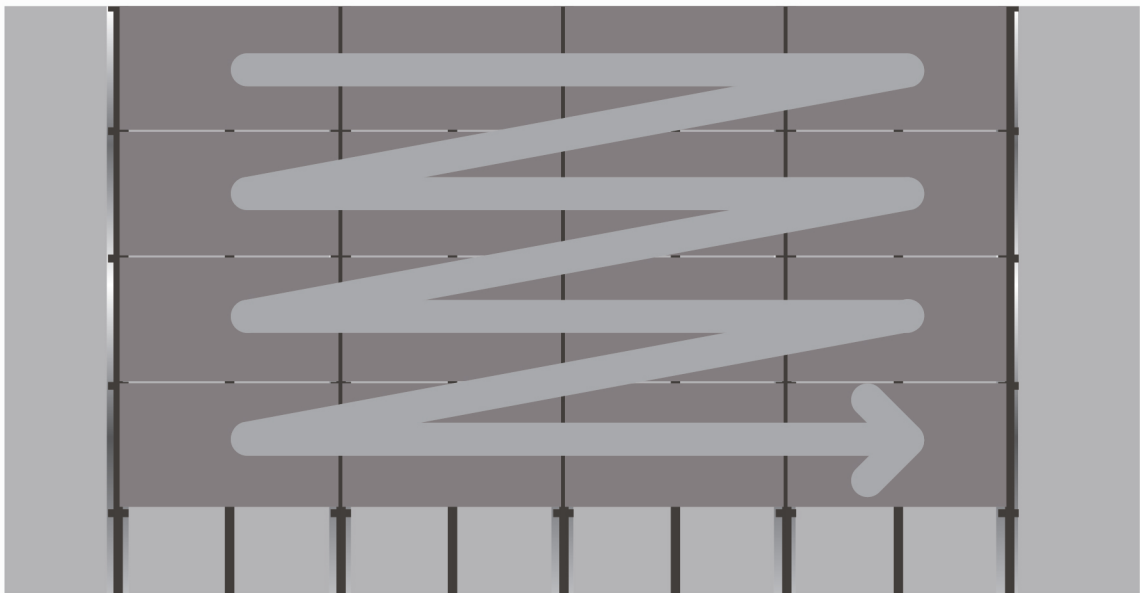
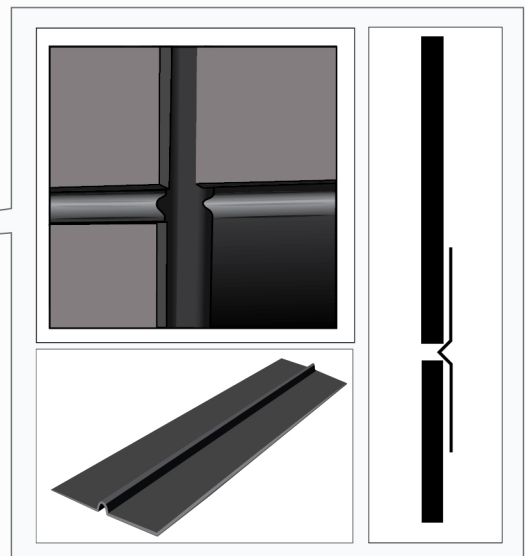
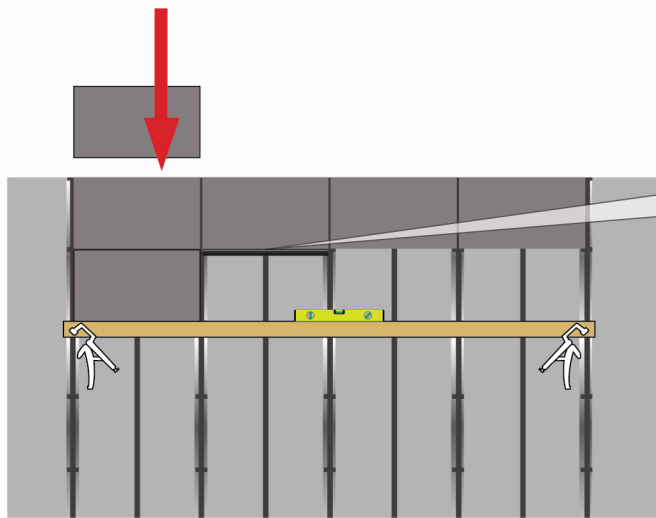


8, 10, or 12mm



Joint Size 8, 10, or 12mm

*Optional Aluminium horizontal joint profile



*Optional Aluminium perforated closer

