

1. Product Appearance

EQUITONE [lunara] is a high-density through coloured fibre cement panel with no coating. The panel has an honest, pure and natural appearance with natural colour variations and hues. The natural characteristic of the panel may be accentuated by the production process as well as light or dark inclusions.

Its unique texture has a random-looking, non-repeating surface structure, covered with tiny irregular elevations and depressions providing a natural appearance. Thanks to the special production process each panel has its own individual and unique character, no two panels are alike. Colour deviating inclusions contribute to the natural appearance of the surface

The panel has been made water repellent by means of hydrophobation.

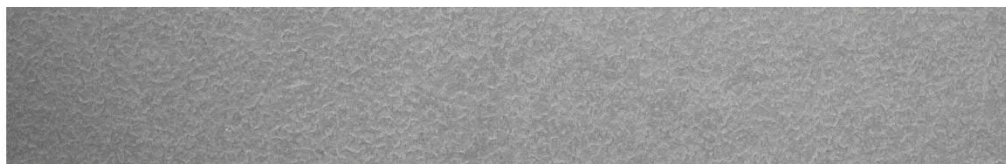
2. Colour

The colour is throughout the panel. Natural colour variations, accentuated by the orientation of the panel, the viewing angle and the effects of light and moisture, strengthen the natural look of the facade.

Colour variations and random hues are part of the natural characteristics of the material. Each panel has its own individual character.

Colour differences are measured according to a simplified CIELAB colour model, by which only the parameter lightness ΔL of the colour is followed. Tolerated colour differences on a dry facade are $\Delta L^* = \pm 2.5$.

Available colours



LA 20



LA 60

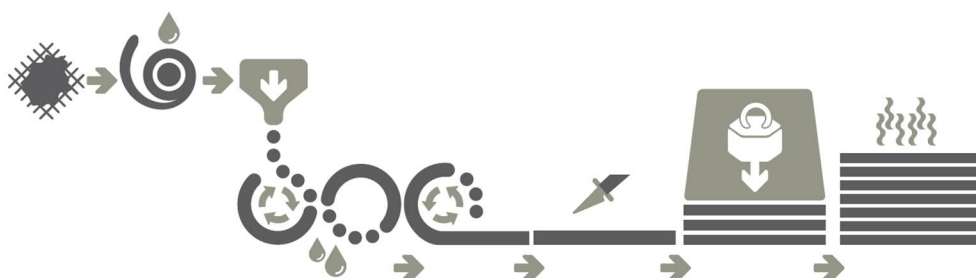
Note: It is not possible to realistically show available colours in literature, therefore the final choice of colours should be made with samples. Please order your samples on the website www.equitone.com

3. Product Composition

EQUITONE [Iunara] panels consist of cement, quartz sand, cellulose, natural calcium silicate, inorganic colour pigments, water and additives.

4. Production Method

EQUITONE [Iunara] is a highly compressed, autoclaved fibre cement material manufactured in Belgium (Europe).



EQUITONE [Iunara] panels are manufactured through the Hatschek process where the base materials which are mainly cement, sand, cellulose, pigments and water are first mixed together to form a slurry. This slurry is then pumped into several vats with rotating cylindrical sieves on the surface of which a film of fibre cement is formed through a sieving mechanism as they rotate, which is then transferred to a felt belt traveling overhead. This thin layer of fibre cement is then dewatered before being transferred via the felt belt to a forming drum on which several layers of fibre cement are collected and squeezed together until the required thickness is achieved. Once this occurs, this fresh sheet of fibre cement is cut by an automatic cutting knife. A conveyor then transports the sheet to where all the sheets are stacked with an interleaving steel plate. The stacked sheets are then highly compressed, resulting in a high density material.

This is followed by a curing process in an autoclave where the panels harden under high temperature and pressure. After curing the panels receive their final finish. The surface is then mechanically processed to create a unique surface.

Subsequently and finally, EQUITONE [Iunara] panels receive a hydrophobation making them water repellent.

5. Dimensions and Tolerances

EQUITONE [Iunara] is available in a standard thickness of 10 mm. The panels are available in either untrimmed (production dimension) or trimmed (maximum usable size) formats.



The panel must not be installed with untrimmed edges. Approximately 10 mm needs to be trimmed from each of the untrimmed (raw) edges. Factory trimmed panels are available in both standard and custom (MTO) trimmed formats. For internal applications where trimmed edges are within close viewing position the latter format may be more suitable. The standard factory trimmed edges may have a slight recess located towards the rear face of the panel.

Dimensions

| | |
|---|-------|
| Panel Thickness base sheet | 10 mm |
| Nominal Thickness (for static bending strength calculation) | 8 mm |

Width

| | |
|-----------|---------|
| Trimmed | 1220 mm |
| Untrimmed | 1240 mm |

Length

| | |
|-----------|-------------------|
| Trimmed | 2500 mm / 3050 mm |
| Untrimmed | 2520 mm / 3070 mm |

Tolerances¹ (for trimmed panels)

| | |
|-----------------------|------------------------|
| Thickness (at crest) | 10 mm ± 1.0 mm |
| Thickness (in valley) | 8 mm -0.2 mm / +1.0 mm |
| Width | ± 3 mm |
| Length | ± 3 mm |
| Squareness | ± 1.0 mm/m |

Tolerances¹ (for untrimmed panels)

| | |
|-----------------------|------------------------|
| Thickness (at crest) | 10 mm ± 1.0 mm |
| Thickness (in valley) | 8 mm -0.2 mm / +1.0 mm |
| Width | ± 5 mm |
| Length | ± 5 mm |
| Squareness | ± 2.0 mm/m |

Weight per m² (nominal, ambient)

18.6 kg/m²

Weight per panel (without pallet)

| | |
|----------------------------|---------|
| 2500 x 1220 mm (trimmed) | 56.7 kg |
| 3050 x 1220 mm (trimmed) | 69.2 kg |
| 2520 x 1240 mm (untrimmed) | 58.1 kg |
| 3070 x 1240 mm (untrimmed) | 70.8 kg |

Packaging

| | |
|----------------------------|----|
| Number of panels on pallet | 30 |
|----------------------------|----|

Usable surface per pallet

| | |
|--------------------------|----------------------|
| 2500 x 1220 mm (trimmed) | 91.5 m ² |
| 3050 x 1220 mm (trimmed) | 111.6 m ² |

Colour tolerance (CIELAB) ²

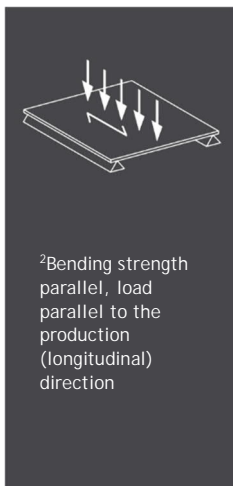
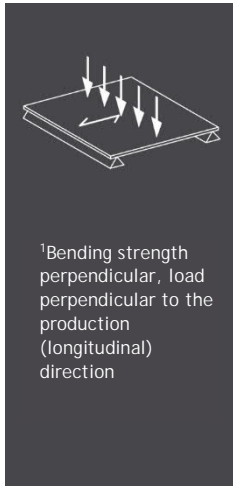
| | |
|---------------------------|-------|
| ΔL^* , brightness | ± 2.5 |
|---------------------------|-------|

¹ Factory tolerances for trimmed and untrimmed panels outperform the requirements of the EN12467 Level I and II dimensional tolerances, respectively.

² Colour tolerance are only to be measured on dry surfaces.

6. Material Properties

EQUITONE [Iunara] cladding panels conform to the requirements of EN 12467:2012+A1:2018 "Fibre cement flat sheets - Product specification and test methods". The results below are presented as defined by the standard.



| Classification | | |
|---|---------|------------|
| Type of product | EN12467 | NT |
| Durability classification | EN12467 | Category A |
| Strength classification | EN12467 | Class 4 |
| Dimensional tolerances for trimmed panels | EN12467 | Level I |
| Dimensional tolerances for untrimmed panels | EN12467 | Level II |

| Bending strength | | | | |
|--|---------|---------|--------|-----|
| Mean modulus of rupture perpendicular ¹ | ambient | EN12467 | 32.0 | MPa |
| Mean modulus of rupture parallel ² | ambient | EN12467 | 22.0 | MPa |
| Modulus of rupture ³ | ambient | EN12467 | 27.0 | MPa |
| Modulus of rupture ³ | wet | EN12467 | 23.5 | MPa |
| Characteristic modulus of rupture ³ | ambient | EN12467 | ≥ 25.0 | MPa |

³ Average of perpendicular and parallel values (Mean of values in both directions)

Note: The characteristic values have been determined according to EN 17468-1:2022, chapter 9.1.2 as the 5 % quantile with 75 % probability.

| Other physical requirements and characteristics | | | | |
|---|---------|---------|---------------|-------------------|
| Mean density | dry | EN12467 | 1630 | kg/m ³ |
| Moisture movement | 30-90 % | EN12467 | <0.08 | % |
| Mean module of elasticity | ambient | EN12467 | 14,000 | MPa |
| Water impermeability test | | EN12467 | No drops/Pass | |
| Characteristic dead load | | - | 0.20 | kN/m ² |

| Durability requirements | | |
|---------------------------------------|---------|------|
| Freeze-thaw test for category A panel | EN12467 | Pass |
| Heat-rain tests for category A panel | EN12467 | Pass |
| Warm water test | EN12467 | Pass |
| Soak-dry test | EN12467 | Pass |

| Fire and safety | | |
|------------------|-----------|----------|
| Reaction to fire | EN13501-1 | A2-s1,d0 |

| Other characteristics | | | | |
|---|-----------|-------------|---------|-------------------|
| Thermal movement | α | - | 0.01 | mm/mK |
| Thermal conductivity | λ | - | 0.39 | W/mK |
| Moisture content at 23°C, 80 % humidity | | - | 6 | M.-% |
| Poisson's ratio | ν | - | 0.2 | - |
| Total volatile organic compounds (TVOC) | | | < 0.5 | mg/m ³ |
| Individual VOC | | CDPH Method | < limit | |
| Formaldehyde | | | ≤ 0.009 | mg/m ³ |

Note to the units: 1 K (degree Kelvin) = 1°C, 1 MPa (Mega Pascal) = 1 N/mm², M.-% = mass percentage

Note: EQUITONE [Iunara] panels also comply with the requirements of ISO8336:2017 "Fibre cement flat sheets - Product specification and test methods"

Performance to AS/NZS 2908.2(**)

| Classification | | |
|--|---------------|------------|
| Dimensional and geometrical tolerances | AS/NZS 2908.2 | Compliant |
| Durability Classification | AS/NZS 2908.2 | Type A |
| Bending Strength Classification | AS/NZS 2908.2 | Category 5 |
| Water Permeability | AS/NZS 2908.2 | Compliant |
| Frost Resistance | AS/NZS 2908.2 | Compliant |
| Warm-Water | AS/NZS 2908.2 | Compliant |
| Heat-Rain | AS/NZS 2908.2 | Compliant |
| Soak-Dry | AS/NZS 2908.2 | Compliant |

(**) Based on an independent assessment and ISO8336 independent testing

7. Fire performance

Australia

EQUITONE facade materials are fibre cement sheeting, and as such are deemed non-combustible in accordance with the following clauses of the NCC, and may be used wherever a non-combustible material is required.

- C2D10(6)(d) of the NCC 2022 Volume 1
- H3D2(1)(d) of the NCC 2022 Volume 2
- C1.9e(iv) of the NCC 2019 Volume 1 (Amendment 1)
- 3.7.1.1(d) of the NCC 2019 Volume 2 (Amendment 1)

EQUITONE fibre cement façade materials are classified as a 'Group 1' material in compliance with AS5637.1 and Specification C2D11 - Fire hazard properties, of the NCC 2022 Volume 1.

New Zealand

EQUITONE façade materials are classified as Type 'A' cladding materials and fully meet the fire properties requirements of external wall cladding materials as outlined in the Verification Method C/VM2 of the NZBC, with Peak Heat Release Rate (kW/m²) of less than (<) 100 and Total Heat Released (MJ/m²) of less than (<) 25 as determined in accordance with ISO 5660.1 at an irradiance of 50 kW/ m² for a duration of 15 minutes.

EQUITONE façade materials are classified as a 'Group 1-S' fire resistant material in accordance with the Verification Method C/VM2 (Appendix 'A') and ISO5660, and as such are safe and suitable for internal lining and ceiling applications.

8. Advantages

Providing the application guidelines are followed, EQUITONE [Iunara] fibre-cement panels have the following superior mix of properties compared to other materials:

- Recyclable according to Environmental Product Declaration (EPD)
- Expected average reference service life of 50 years (based on EPD)
- Fire safe (no fire ignition, no spread of fire)
- Improved sound insulation of the facade
- UV-resistant
- Resistant to extreme temperatures
- Weather resistant
- Resistant to many living organisms (fungi, bacteria, insects, vermin, etc.)
- Resistant to many chemicals
- Strong and rigid panel
- Can be ideally combined with [tectiva] and [lines] in the same colour

Working with the material:

- The material is easy to drill, cut and install with the proper tools
- Cut edges do not need to be sealed

9. Applications

EQUITONE [Iunara] can be used in several ventilated applications, including, but not limited to:

- Ventilated facade or rainscreen cladding
- Window and door reveal
- Exterior ceiling: decorative cladding of ceiling
- Soffits, eaves and verge boards
- Interior wall and ceiling lining (subject to local regulations)

For restrictions on the above-mentioned applications read the specific application guidelines.

The panels may be face or concealed fixed with Etex proprietary or recommended fixing solutions.

EQUITONE [Iunara] can not be used in the following applications, but not limited to: Internal applications exposed to direct moisture e.g. wet areas, situations with direct contact with standing snow or ice, applications where exposed to long term temperatures exceeding 80°C, and roof applications.

10. Health and Safety Aspects

During the mechanical machining of panels, dust can be released which can irritate the airways and eyes. Depending on the working conditions, adequate machinery with dust extraction and/or ventilation should be foreseen. The inhalation of fine (respirable size) quartz containing dust, particularly when in high concentrations or over prolonged periods of time can lead to lung disease and an increased risk of lung cancer. For more information, please visit www.equitone.com for the most recent Safety Information Sheet.

11. Maintenance and Cleaning

Refer to the relevant "EQUITONE Cleaning and Maintenance Information" Guide.

12. Certification



EQUITONE façade materials and systems are CodeMark certified in Australia and New Zealand. For more details, please refer to the CodeMark certificates available at www.equitone.com.

The manufacturer can - within the framework of the European Regulation N° 305/2011 (CPR) - present the Declaration of Performance (DOP) of the product such confirming that the product has a CE marking. The CE marking guarantees that the product is in accordance with the basic requirements determined by the harmonized European standard and applicable to the product.

The Declaration of Performance is presented in accordance with the CPR and can be found at www.equitone.com.

The manufacturing facility holds the latest versions of the following ISO certificates

- ISO 9001 Quality Management System
- ISO 14001 Environmental Management System
- ISO 45001 Occupational Health and Safety

EQUITONE [Iunara] is certified with an Environmental Product Declaration according to ISO 14025 or EN 15804. The life cycle assessment includes raw material and energy production, the actual manufacturing phase, and the use phase of the fibre cement panels. More information available in the Material Sustainability Datasheet. EQUITONE [Iunara] is Cradle to Cradle Certified at the Bronze level.

13. Information



Please visit www.equitone.com for contact details and further information and technical documents.

Disclaimer

The information in this document is correct at time issuing. However, due to our committed program of continuous material and system development we reserve the right to amend or alter the information contained therein without prior notice. Please visit www.equitone.com to ensure you have the most current version. All figures contained in this document are illustrations and should not be used as construction drawings. This information is supplied in good faith and no liability can be accepted for any loss or damage resulting from its use. This document is protected by international copyright laws. Reproduction and distribution in whole or in part without prior written permission is strictly prohibited. EQUITONE and logos are trademarks of Etex NV or an affiliate thereof. Any use without authorisation is strictly prohibited and may violate trademark laws.

