

## Product description

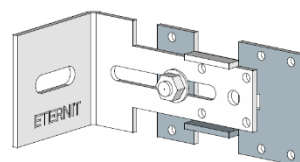
Adjustable bracket for fixing the wooden support frame of a ventilated façade system.

The adjustable bracket is available in 2 versions, with range 110 to 150 mm and 150 to 190 mm. Also a plastic “Thermostop” to isolate the bracket from the supporting wall is available.

**ARTICLE NUMBER:** 4006529 (bracket 110-150mm)  
4035429 (bracket 150-190mm)  
4025932 (thermostop)

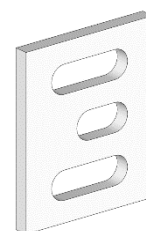
## 1. Adjustable bracket

Technical Characteristics	
Material	Sendzimir galvanised steel
Thickness	3 mm
Dimensions	
110-150 mm	60 x 67 x 110 to 150 mm
150-190 mm	60 x 67 x 150 to 190 mm
Weight	
110-150 mm	± 0.30 kg/pc
150-190 mm	± 0.32 kg/pc



## 2. Thermostop

Technical Characteristics	
Material	PVC
Colour	White
Dimensions	
Dimensions	60 x 50 x 5 mm



## 3. Packaging

Per piece

## 4. Processing

Read the application guidelines for façade panels screwed on wooden support frame before installation.

---

### Disclaimer

The information in this document is correct at time issuing. However, due to our committed program of continuous material and system development we reserve the right to amend or alter the information contained therein without prior notice. Please visit [www.equitone.com](http://www.equitone.com) to ensure you have the most current version. All figures contained in this document are illustrations and should not be used as construction drawings. This information is supplied in good faith and no liability can be accepted for any loss or damage resulting from its use. This document is protected by international copyright laws. Reproduction and distribution in whole or in part without prior written permission is strictly prohibited. EQUITONE and logos are trademarks of Etex NV or an affiliate thereof. Any use without authorisation is strictly prohibited and may violate trademark laws.