



 **EQUITONE**®  
Fibre cement facade materials



# EQUITONE fibre cement facade materials

When Ludwig Hatschek invented fibre cement in the late 19th century, he combined the basic elements of the earth: mineral materials, water, air and fire (heat) in a simple filtration process. Our mother company, Etex, has been manufacturing fibre cement materials since 1905. The most prestigious incarnation in this proud heritage of unique materials is the EQUITONE® facade material range. The Hatschek production process makes each EQUITONE facade panel unique with an individual fibre cement texture. Most EQUITONE facade materials are through-coloured with a raw, unfinished character.

In the 1950s leading architects such as Walter Gropius pioneered the use of coated fibre cement panels using the ventilated facade (rainscreen) system. Designer Willy Guhl created the famous "loop chair" from a single piece of fibre cement in 1954. This design still bears witness to the core qualities of the fibre cement base material: thin, light, durable and beautiful. In 1987, Herzog & De Meuron designed the Ricola storage building in Laufen using uncoated fibre cement panels. The resulting shutter facade, which is a reference to the cardboard boxes inside, inspired our company to start the industrial development of raw untreated fibre cement materials.

Today, EQUITONE materials offer a palette of possibilities. Leading architects of our time are exploring and transforming the EQUITONE materials in remarkable facade designs.



This document is protected by International copyright laws. Reproduction and distribution in whole or in part without prior written permission is strictly prohibited. EQUITONE and logos are trademarks of Etex NV or an affiliate thereof. Any use without authorisation is strictly prohibited and may violate trademark laws.

# Giving material a second life

## Our 2030 ambitions

At EQUITONE, we dedicate ourselves to reuse and recycle all our materials, giving them a second life. With your help, we want to take it one step further and rethink the way they are designed and used, reducing our natural resource consumption and cutting out waste.

### Light-impact materials

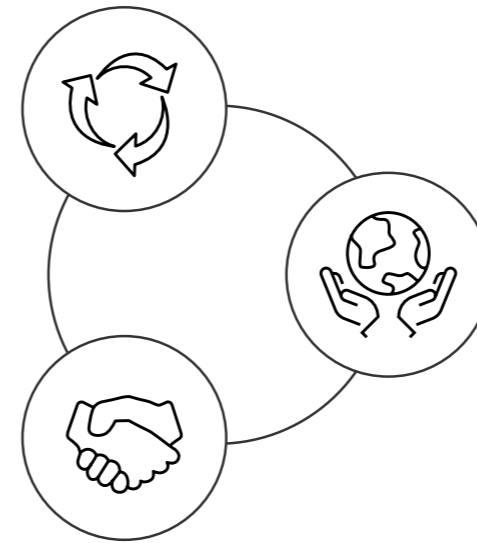
Minimising their environmental footprint throughout their entire life cycle.

### Zero waste to landfill

Keeping our materials in use and out of landfill.

## Our 3 areas of focus:

How we want to go from long life and lightweight to light impact and circular by design.



### Circular design

Designing our materials as a modular system that is easy to dismantle, repair and rebuild – making sure they can be reused and recycled over and over again.

### Light-impact construction

Reducing our footprint across the value chain to create materials that are built to be light-impact.

### Radical collaboration for lasting change

Breaking down industry silos to eliminate the total footprint of our materials – not just in production but throughout their entire life cycle.

## The circular potential of fibre cement cladding

Made of water, Portland cement, cellulose and natural minerals, our materials are the perfect building blocks for a circular construction industry.



Recyclable



Low maintenance



Lightweight



Low material usage/m<sup>2</sup>



Durable (+50 years)



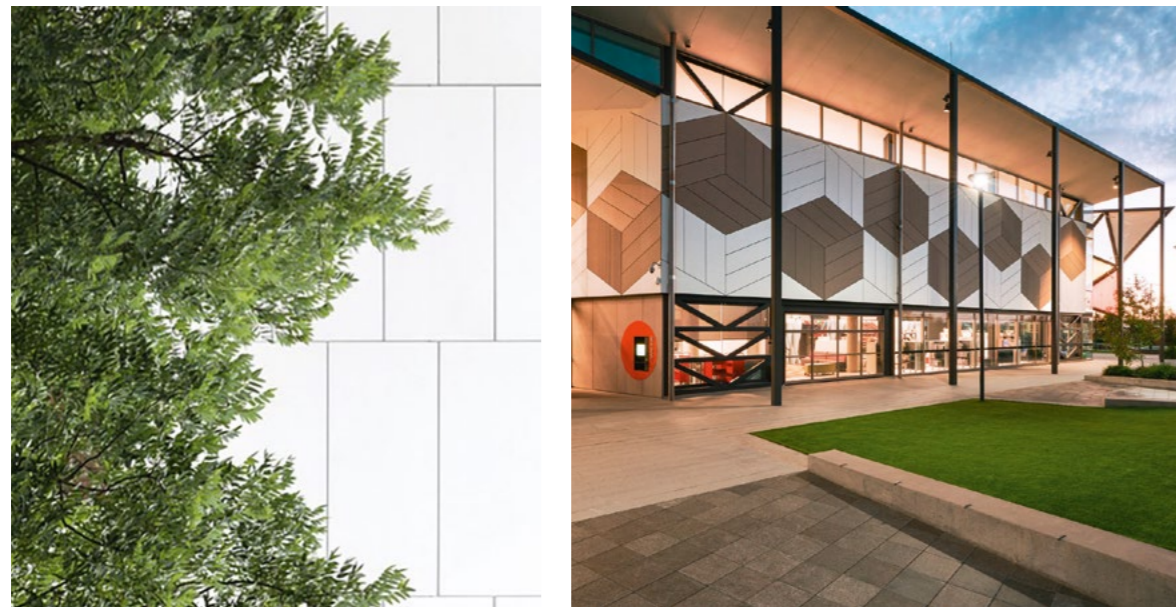
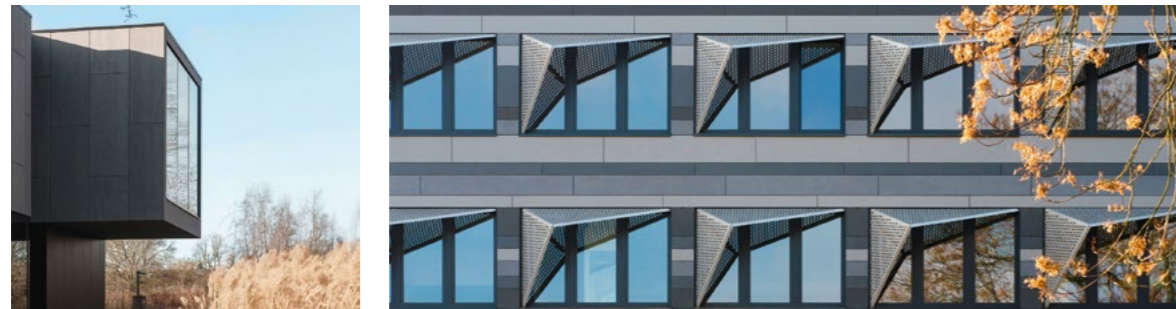
Modular



Arch.: 180 grad Architekten, Heerbugg, Switzerland

# Five compelling reasons to opt for EQUITONE rainscreen facade solutions

Discover why EQUITONE is your premier partner for innovative ventilated facade projects. From enduring durability to unmatched design flexibility, expert services, sustainability, and safety, each aspect reflects a commitment to responsible excellence, transforming your architectural aspirations into enduring realities.



Arch.: Brewster Hjorth Architects, Sydney, Australia



## Durability

Designed for strength and reliability, EQUITONE panels, seamlessly installed on the facade using a rear-ventilated curtain system, offer:

- > Over 50 years of longevity
- > Anti-graffiti protection\*
- > Resistance to extreme temperatures and frost
- > Exceptional water resistance
- > Chemical resistance



## Sustainability

EQUITONE takes the lead in environmental excellence, offering a sustainable framework that will contribute to the success of your future projects:

- > Cradle to Cradle Certified® Bronze\*\*
- > 100% recyclable
- > Low material usage/m<sup>2</sup>
- > Modular design
- > Lightweight construction
- > Ease of disassembly
- > Low maintenance
- > No harmful gas emissions



## Design flexibility

Empower your design journey with EQUITONE's flexible solutions:

- > Customizable sizes and shapes
- > Perforation, milling, and printing options
- > Resilience against various living organisms
- > Accommodating special applications, including curved walls, roofs, interiors, and brise soleil
- > Vertical, horizontal, or angled layouts
- > Random or staggered patterns



## Expert services

Ease through your daily challenges at every stage of your architectural project with the expert services offered by EQUITONE:

- > Over 120 years of experience
- > Expert consultations available at every project stage
- > Access to online technical resources
- > BIM object support
- > Regular workshops with architects to enhance your experience



## Safety

Experience peace of mind and unparalleled safety with EQUITONE, where every detail is crafted to meet and exceed the highest industry standards:

- > EN 13501 fire reaction standard at A2-s1,d0 level
- > EN 12467 Class 4 strength classification
- > No harmful gas emissions

\* Applicable to: natura PRO, pictura and inspiria.

\*\* Applicable to: natura, natura PRO, tectiva, lunara, linea, textura, pictura.

# Design potential

EQUITONE facade materials offer unparalleled design flexibility. The fibre cement material is through-coloured, which means the surface displays the inner texture and colour of the core fibre cement material. No matter what facade design options you explore, the through-coloured materials can be transformed into crisp, monolithic facade details.

EQUITONE façade materials come in a maximum panel size of 1.22 x 3.05m and 1.25 x 3.10 m depending on the finish and can be transformed into any size or shape using standard tools in the workshop or on site. The material can be perforated using waterjet or CNC machines: large or very small cuts can be made: it can even be embossed and printed. Some designers have used it for interiors or furniture. The through-coloured material allows you to achieve flawless intricate details.



Arch.: Broissin, Mexico City, Mexico



Arch.: AR-TE, Leuven, Belgium



Arch.: Regina Schineis, Augsburg, Germany



Arch.: Busmann + Haberer, Berlin, Germany



Arch.: Astrid Bornheim, Berlin, Germany



Arch.: 1100 Architekten Riehm + Piscuska BDA, Frankfurt am Main



Arch.: Architectural Services Department, Hong Kong SAR Government, Hong Kong, China



Arch: RS+ Robert Skitek, Śląsk, Poland



Arch.: KLE Freie Architekten BDA, Germany

# Empowering your creativity

From the material's rawest expression to your own inspiration, your only limit is your imagination.

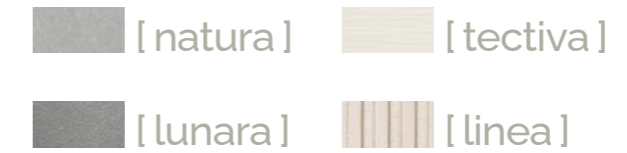
The range begins with the grey and subtle authenticity of two natural fibre cement materials, Natura and Tectiva. It continues with progressive degrees of mechanical surface modifications in Lunara and Linea. (The Minerals)

Next, the Pictura, Textura and Coloura subsets bring a range of colours to your façade designs. (The Colourfuls)

Finally, the impressions of nature in the Inspiria range and artistic graphical surfaces with designs created with architects for architects, offer you endless creative options. (The Graphicals)

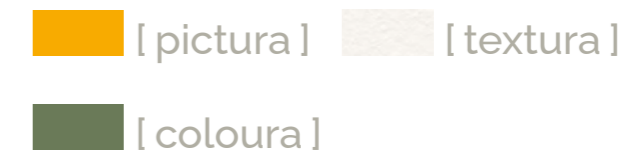
## The Minerals

Embrace natural and authentic elegance, explore our earthly mineral-tone panels



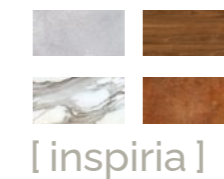
## The Colourfuls

Awaken your facade: discover our vibrant palette for a colourful and original aesthetic



## The Graphicals,

Dive into a world of unlimited visual. Versatility with wood, rust, concrete, stone and nature-inspired graphic designs



# The Minerals



Arch.: Domus Studio Projektowe Sieniawski&Sieniawski,  
Gdańsk, Poland



# EQUITONE [ natura ]

**EQUITONE [ natura ]** is a through-coloured facade material. It has a sleek and refined surface with visible fibres randomly distributed throughout. Optional Natura PRO finish is also available with a graffiti protection and is particularly scratch-resistant.

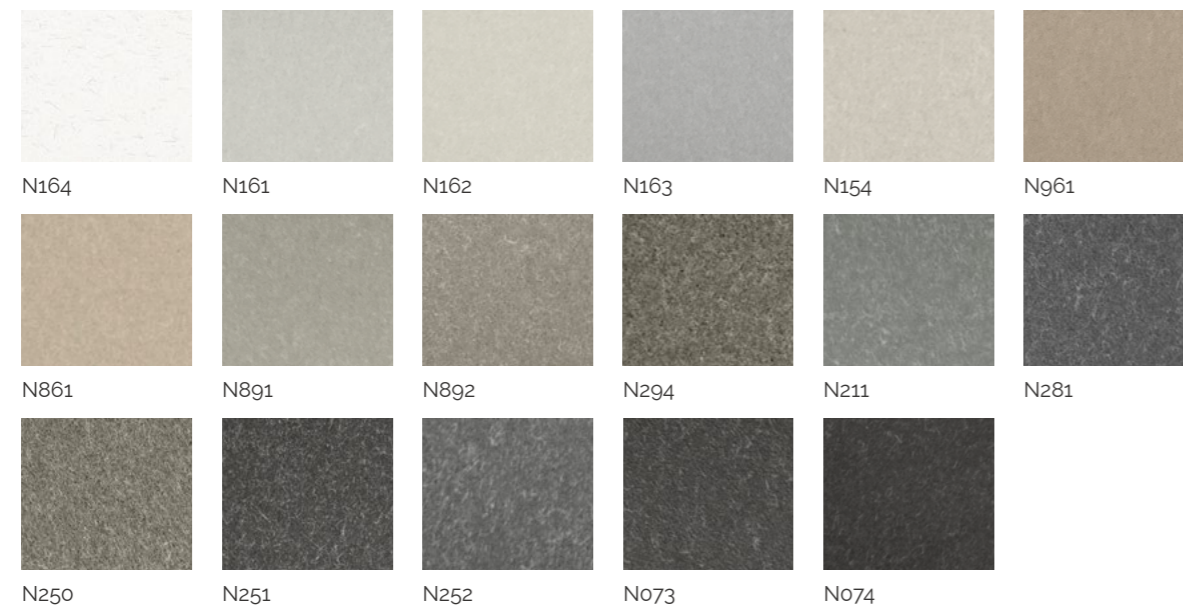
**Touch:** Matt, silk, smooth surface finish.

**Visual:** Fibres distributed randomly like the Milky Way, refined, precious.

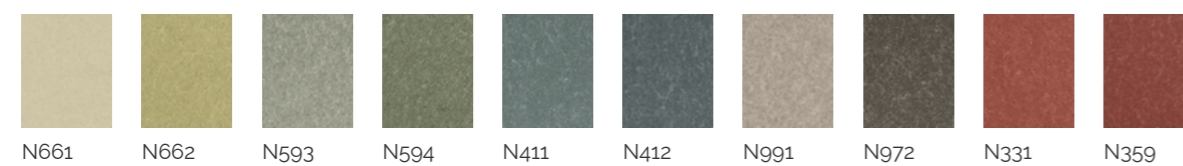
| Thickness | Width    | Lengths        |
|-----------|----------|----------------|
| 8 - 12 mm | 1 250 mm | 2 500/3 100 mm |

AVAILABLE IN 27 COLOURS:

## THROUGH-COLOURED



## SPECIAL COLOURS



Other colours available on request, subject to minimum order quantities.



Arch.: Delugan & Meissl Architects, Austria



Arch.: Spaces architects and urban planners gmbh, Munich, Germany



Arch.: Foitzik Krebs Spies Partnerschaft mbB; SPRENGWERK, Architektur und Sanierung, Germany

# EQUITONE [ tectiva ]

**EQUITONE [ tectiva ]** is a through-coloured facade material, characterised by a sanded surface. Every panel is unique, strongly expressing the raw texture of the core fibre cement material.

**Touch:** Fine sanding lines.

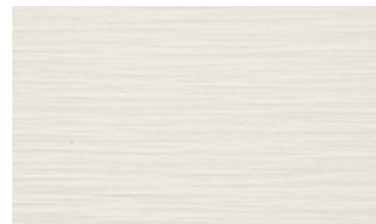
**Visual:** Dry, lively, dynamic, with naturally occurring hues within the material.

| Thickness | Width    | Lengths        |
|-----------|----------|----------------|
| 8 mm      | 1 220 mm | 2 500/3 050 mm |

## AVAILABLE IN 9 COLOURS



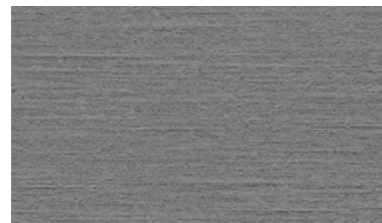
TE85



TE90



TE30



TE20



TE00



TE40



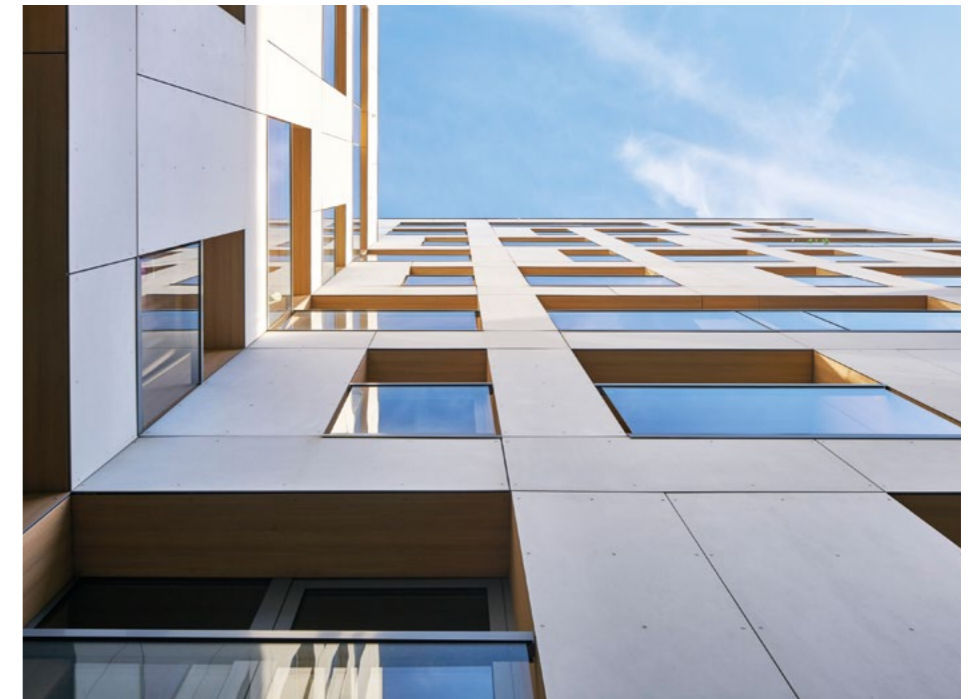
TE15



TE10



TE60



Arch.: JEMS Architekci, Warsaw, Poland



STUDIOWORKERS, José and Isabel Machado, Espinho, Portugal



Arch.: ARKit, Melbourne, Australia

# EQUITONE [ lunara ]

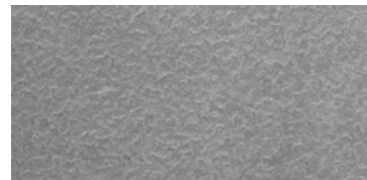
**EQUITONE [ lunara ]** is a through-coloured fibre cement panel with a surface resembling a lunar landscape. Each panel is unique in terms of its colour, texture and surface, with a pattern that is not repeated.

**Touch:** Rough, unpolished fibre cement surface with delicate linen touch.

**Visual:** Expressive, natural, unique.

| Thickness | Width    | Lengths        |
|-----------|----------|----------------|
| 10 mm     | 1 220 mm | 2 500/3 050 mm |

AVAILABLE IN 2 COLOURS



LA20



LA60



Arch.: Kirstine Roepstorff, Hannover, Denmark



Arch.: una|a- Urban Nation Architects, Wemmel, Belgium



Arch.: Kulla Architekten, Hofheim, Germany

# EQUITONE [ linea ]

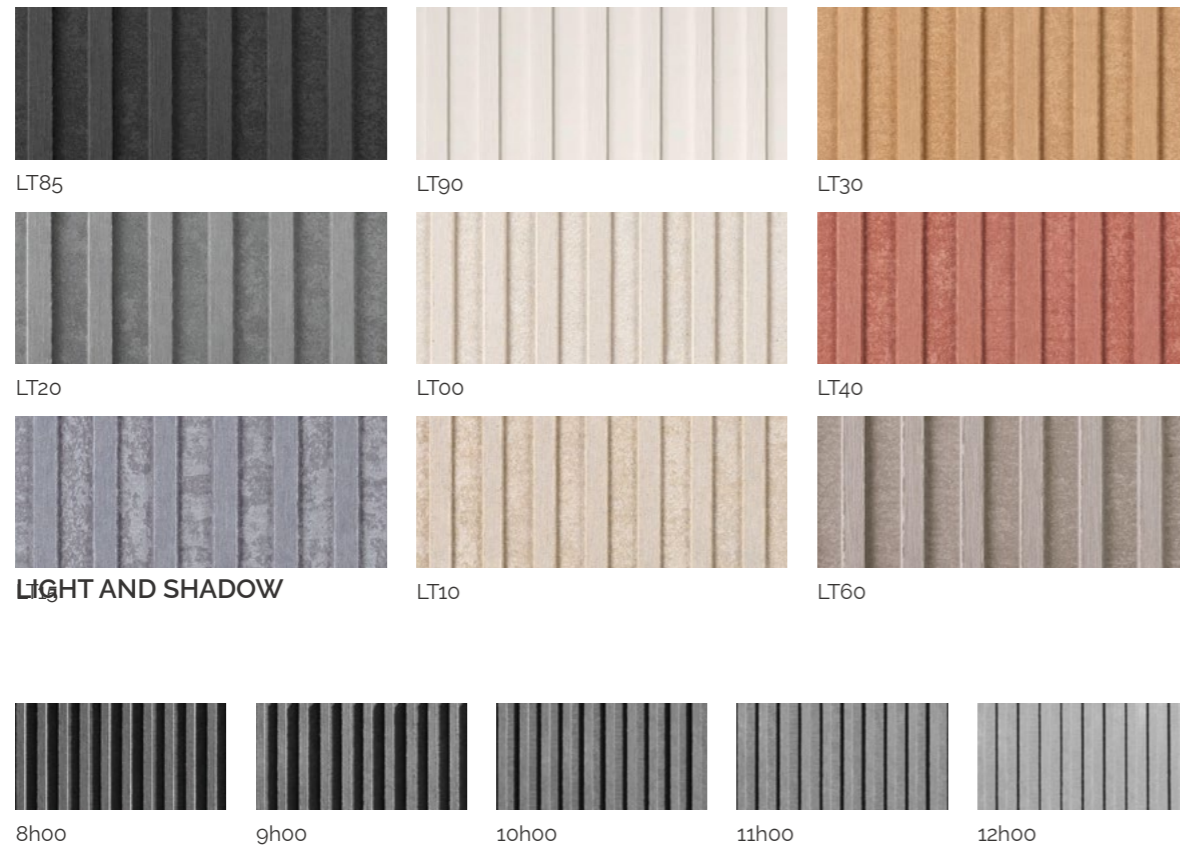
**EQUITONE [ linea ]** is a unique 3D shaped, through-coloured facade material that plays with light and shadow. It displays a linear texture that highlights the raw inner texture of the core fibre cement material.

**Touch:** Structured, relief, depth.

**Visual:** Different, playful, lots of possibilities, changes depending on the point of view.

| Thickness | Width    | Lengths       |
|-----------|----------|---------------|
| 10 mm     | 1 220 mm | 2 500/3050 mm |

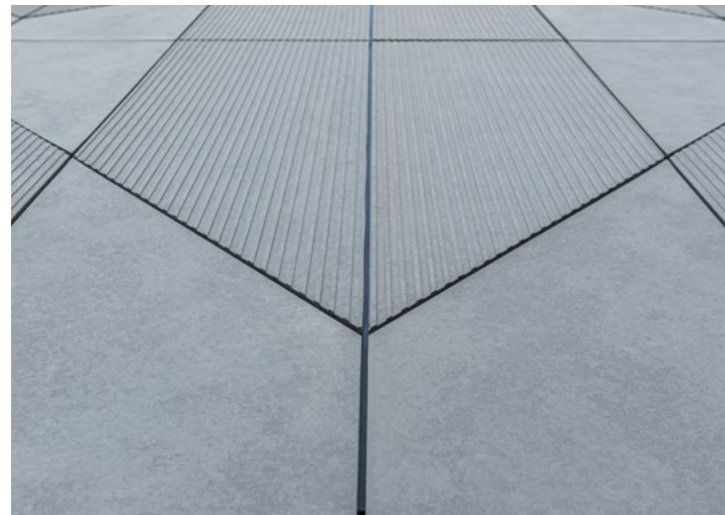
AVAILABLE IN 9 COLOURS



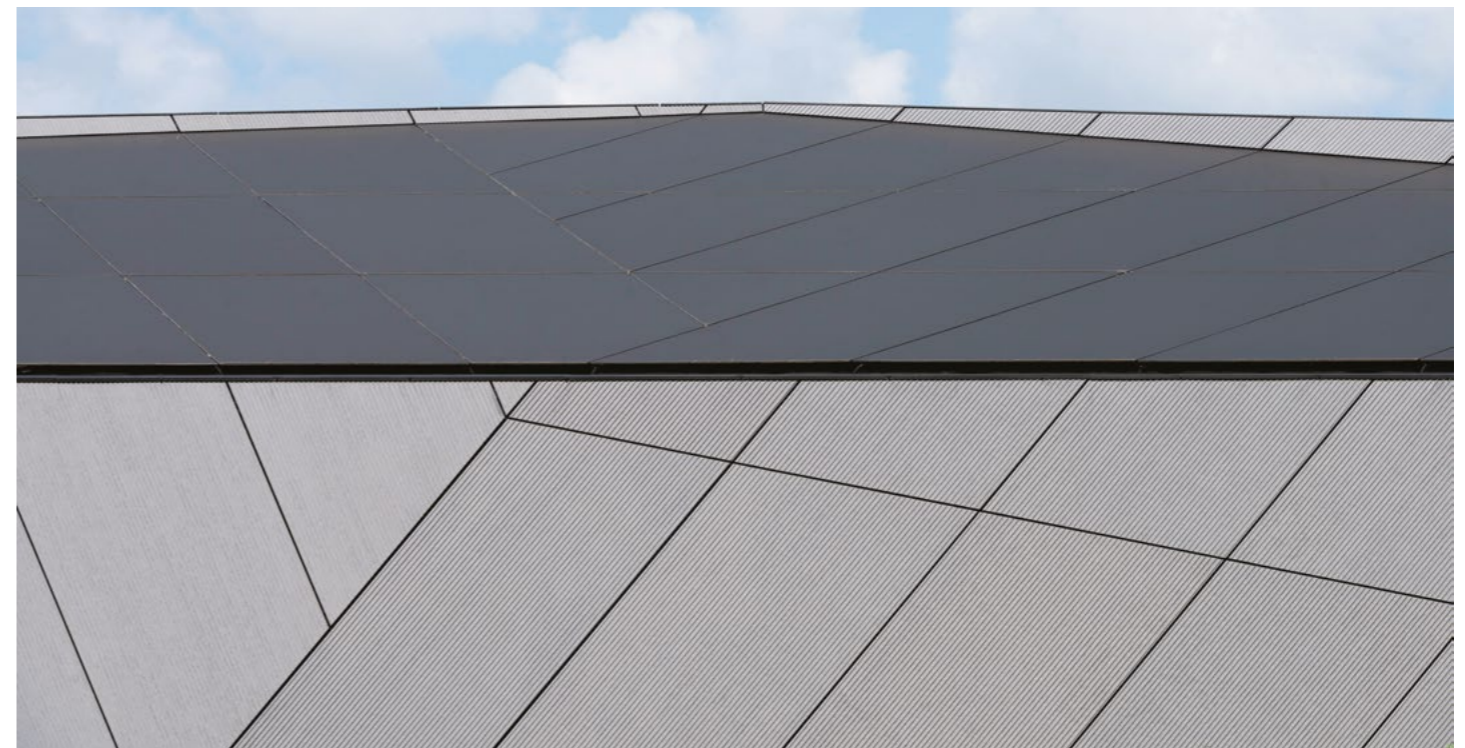
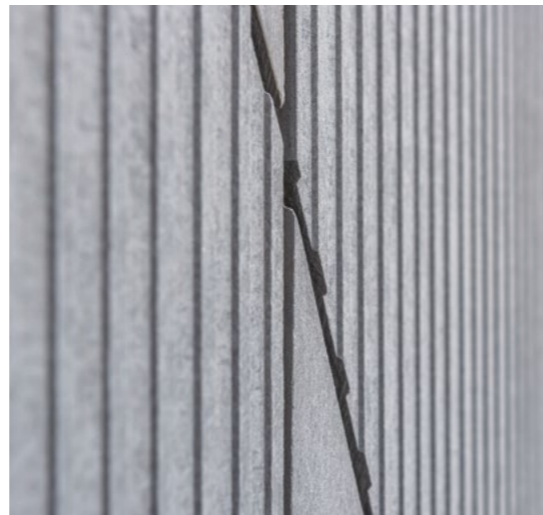
Arch.: 55Architekci, Stary Sącz, Poland



Arch.: LAB5, Tatabánya, Hungary



Arch.: Artrys, Opacz Kopalnia, Poland



Arch.: RS+ Robert Skitek, Tychy, Poland



# The Colourfuls



Arch.: ÁRTER Architects, Perwez, Belgium

# EQUITONE [ pictura ]

**EQUITONE [ pictura ]** is a fibre cement facade material with an ultra matt architectural finish. Thousands of custom-matched matt project colours are available on request.

**Touch:** Smooth, matt, no visible fibres.

**Visual:** Classic, brings colourful accents in the facade.

| Thickness | Width   | Lengths      |
|-----------|---------|--------------|
| 8 - 12 mm | 1250 mm | 2500/3100 mm |

## AVAILABLE IN 20 STANDARD COLOURS

|   |   |   |  |   |
|---|---|---|--|---|
|  |  |  |  |  |
| PW141   | PW841   | PG542   | PG842  | PG641   |
|  |  |  |  |  |
| PG243   | PG843   | PG546   | PG545  | PG544   |
|  |  |  |  |  |
| PG241   | PG844   | PG444   | PG443  | PG442   |
|  |  |  |  |  |
| PA041   | PA944   | PG342   | PG341  | PG742   |

Other colours on request, subject to minimum order quantities.



Arch.: Jo Coenen Architects & Urbanists, Venlo, Netherlands



Arch.: mvarchitakt + starkearchitektur, Cologne, Germany



Arch.: ZOKOarchitekci, Poznań, Poland

# EQUITONE [ textura ]

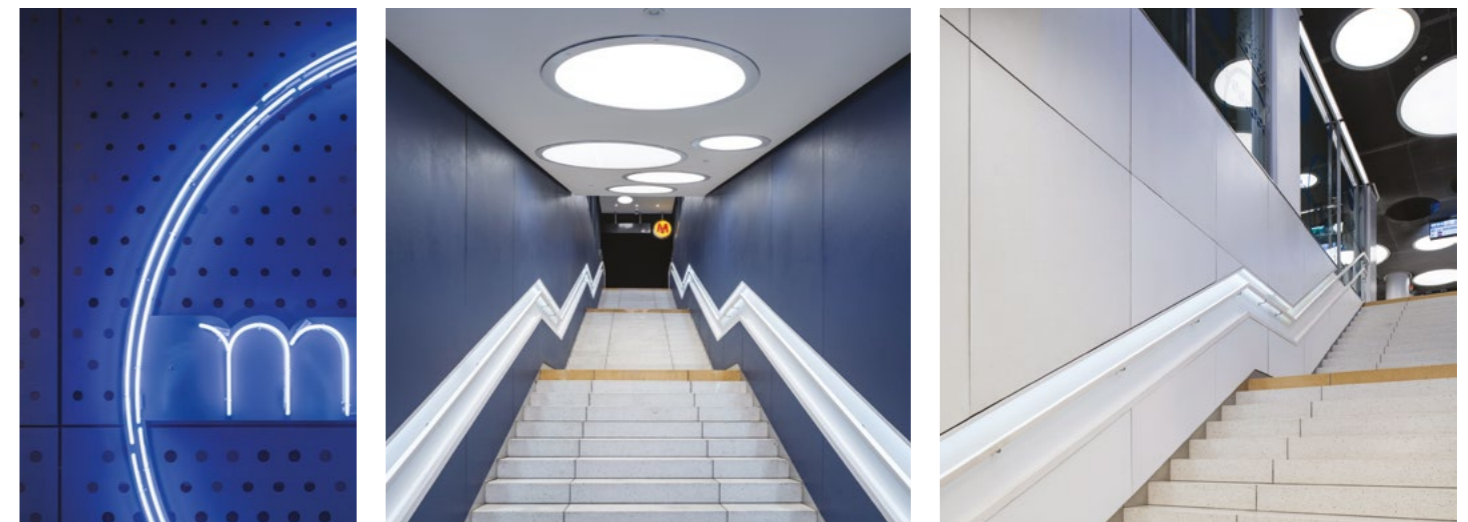
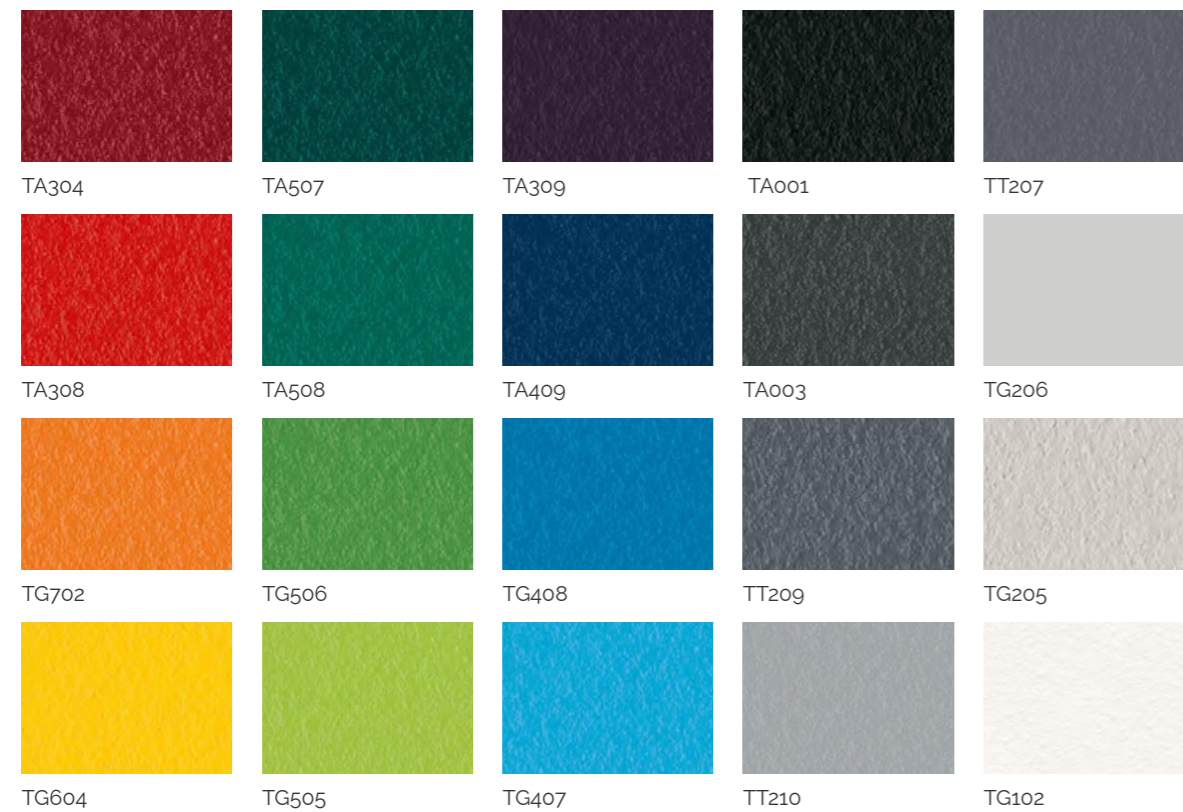
EQUITONE [ textura ] is a through-coloured fibre cement material, with a special coating featuring UV-resistant pigments that ensure vibrant colours permanently. The uniform surface guarantees a long-lasting clean look.

**Texture :** fine-grained surface.

**Aspect :** satin, pearl effect.

| Thickness | Width    | Lengths        |
|-----------|----------|----------------|
| 8 mm      | 1 250 mm | 2 500/3 100 mm |

## AVAILABLE IN 20 STANDARD COLOURS



Arch.: Biuro Projektów Kazimierski i Ryba Sp. J. Projekt, Metro Młynów, Warsaw, Poland

# EQUITONE [ coloura ]

**EQUITONE [ coloura ]** is a high-density fibre cement facade material with a coloured double layer PU-acrylic coating.

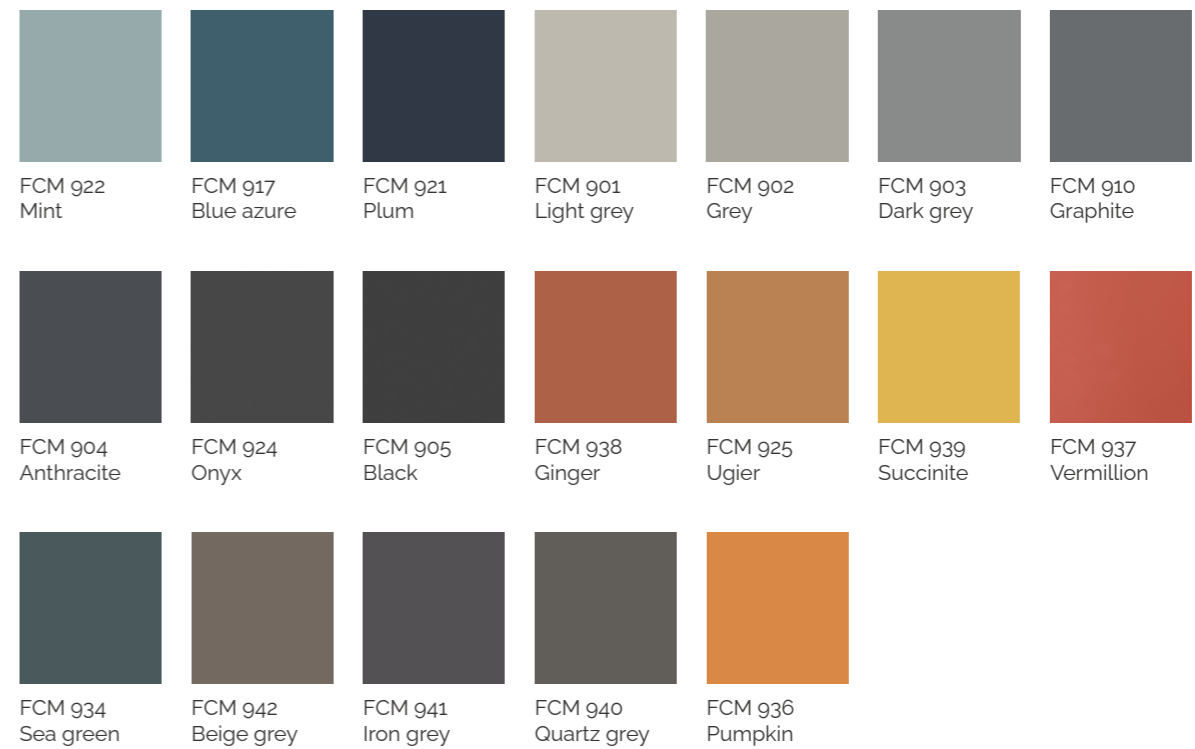
**Touch:** Smooth, hard, matt.

**Visual:** brings colourful accents in the façade.

| Thickness | Width    | Lengths        |
|-----------|----------|----------------|
| 8 mm      | 1 250 mm | 2 500/3 100 mm |



## AVAILABLE IN 37 STANDARD COLOURS





# The Graphicals



# EQUITONE [ inspiria ]

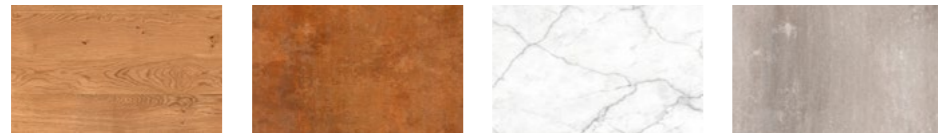
**EQUITONE [ inspiria ]** is a high-density fibre cement panel with a digital printed surface covered with a UV finishing.

The surface finish is smooth, hard, matt and resistant to UV radiation. The UV finishing provides a hard, dirt resistant surface finish with high abrasion resistance and a permanent and durable anti-graffiti surface.

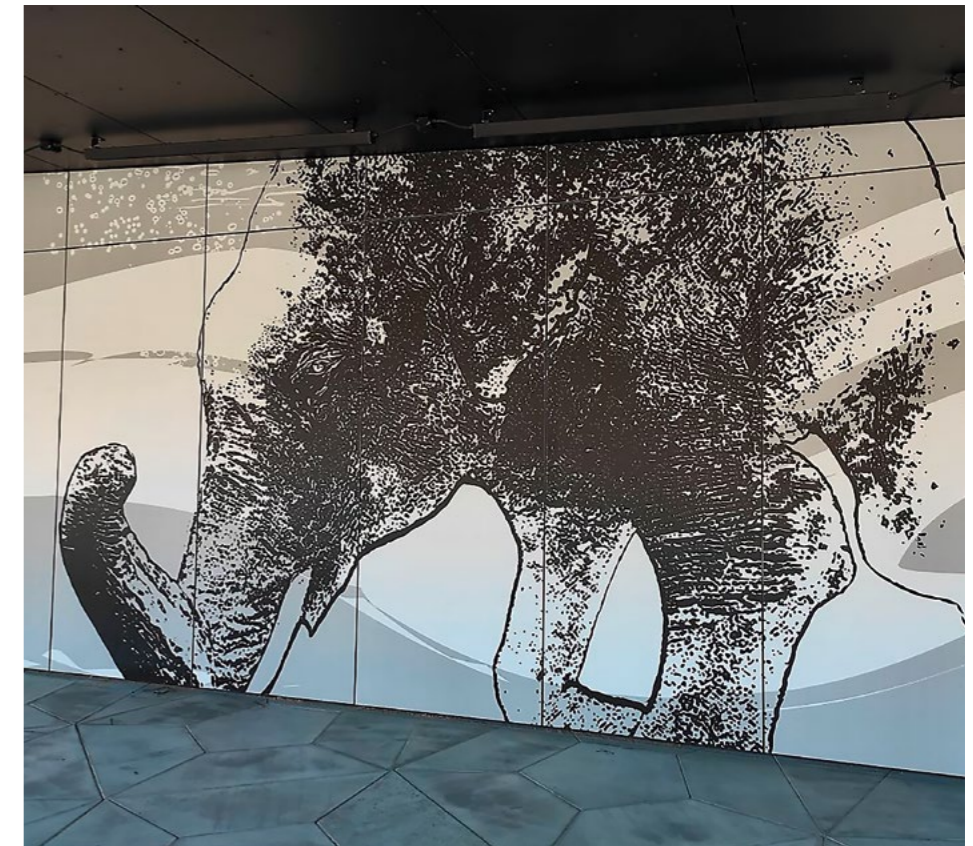
| Thickness | Width    | Lengths        |
|-----------|----------|----------------|
| 8 mm      | 1 250 mm | 2 500/3 100 mm |

Tap into an endless potential of creative options with our nature-inspired range of façade materials.

**Expressive surfaces** with wood, rust, stone and concrete decors.



## Unlimited Creation



Dorota Szlachcic

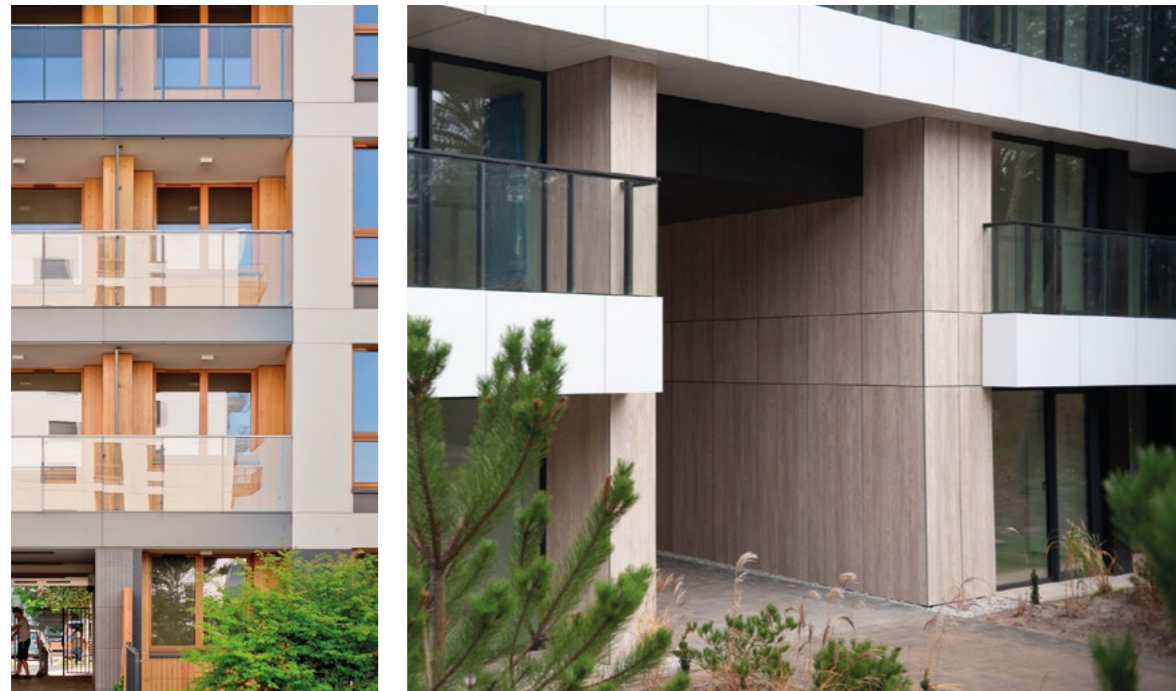
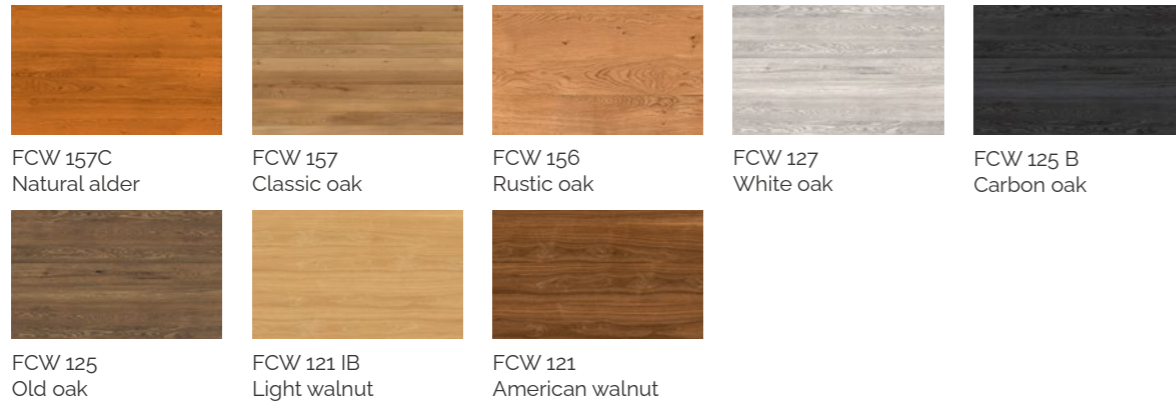


# EQUITONE [ inspiria ]

## Wood

AVAILABLE IN 8 WOOD DECORS WITH ANTI-GRAFFITI SURFACE:

| Thickness | Width   | Lengths      |
|-----------|---------|--------------|
| 8 mm      | 1250 mm | 2500/3100 mm |



## Rust

AVAILABLE IN 4 RUST DECORS WITH ANTI-GRAFFITI SURFACE:

| Thickness | Width   | Lengths      |
|-----------|---------|--------------|
| 8 mm      | 1250 mm | 2500/3100 mm |



# EQUITONE [ inspiria ]

## Stone

AVAILABLE IN 8 STONE DECORS WITH ANTI-GRAFFITI SURFACE:

|                  |              |                |
|------------------|--------------|----------------|
| <b>Thickness</b> | <b>Width</b> | <b>Lengths</b> |
| 8 mm             | 1250 mm      | 2500/3100 mm   |



FCS 548  
Black marble



FCS 547  
Cracked marble



FCS 530  
Black stone



FCS 075  
Silver calacatta



FCS 074  
Gold calacatta



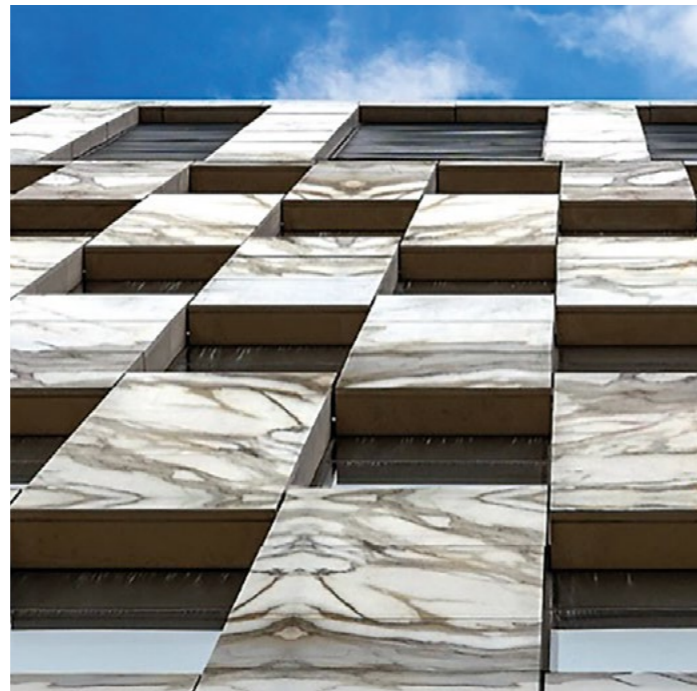
FCS 059  
White calacatta



FCS 006  
Beige travertine



FCS 004  
Amber travertine



## Concrete

AVAILABLE IN 10 CONCRETE DECORS WITH ANTI-GRAFFITI SURFACE:

|                  |              |                |
|------------------|--------------|----------------|
| <b>Thickness</b> | <b>Width</b> | <b>Lengths</b> |
| 8 mm             | 1250 mm      | 2500/3100 mm   |



FCC 426 B  
Warm concrete



FCC 426  
Bright concrete



FCC 320  
Grey concrete



FCC 020 A  
Grey rust



FCC 318 A  
Industrial black



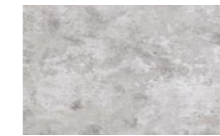
FCC 318  
Industrial brown



FCC 292  
Silver concrete



FCC 020 B  
Dark rust



FCC 437  
Wild plaster



FCC 025  
Cracked plaster





 **EQUITONE**®  
Fibre cement facade materials



**Eternit Baltic UAB**  
J. Dalinkevičiaus g. 2H  
85118 Naujoji Akmenė  
Lithuania

Join us:  
 [equitone\\_CEE](https://www.instagram.com/equitone_CEE)

Please be advised that the choice of colours and textures of the building materials shown in the catalogue should be made on the basis of the samples in nature available from the sales representatives. The printing technology may have a significant impact on the differences in colours and textures between the illustrations shown and the actual building materials. A material sample can be ordered at [www.equitone.com](http://www.equitone.com).

[equitone.com](http://equitone.com)

**Gintaras Slepikas**  
EQUITONE Sales Manager Baltics  
M: +370 69834965  
[gintaras.slepikas@etexgroup.com](mailto:gintaras.slepikas@etexgroup.com)