

 **EQUITONE**  
by etex

[ inspires ]

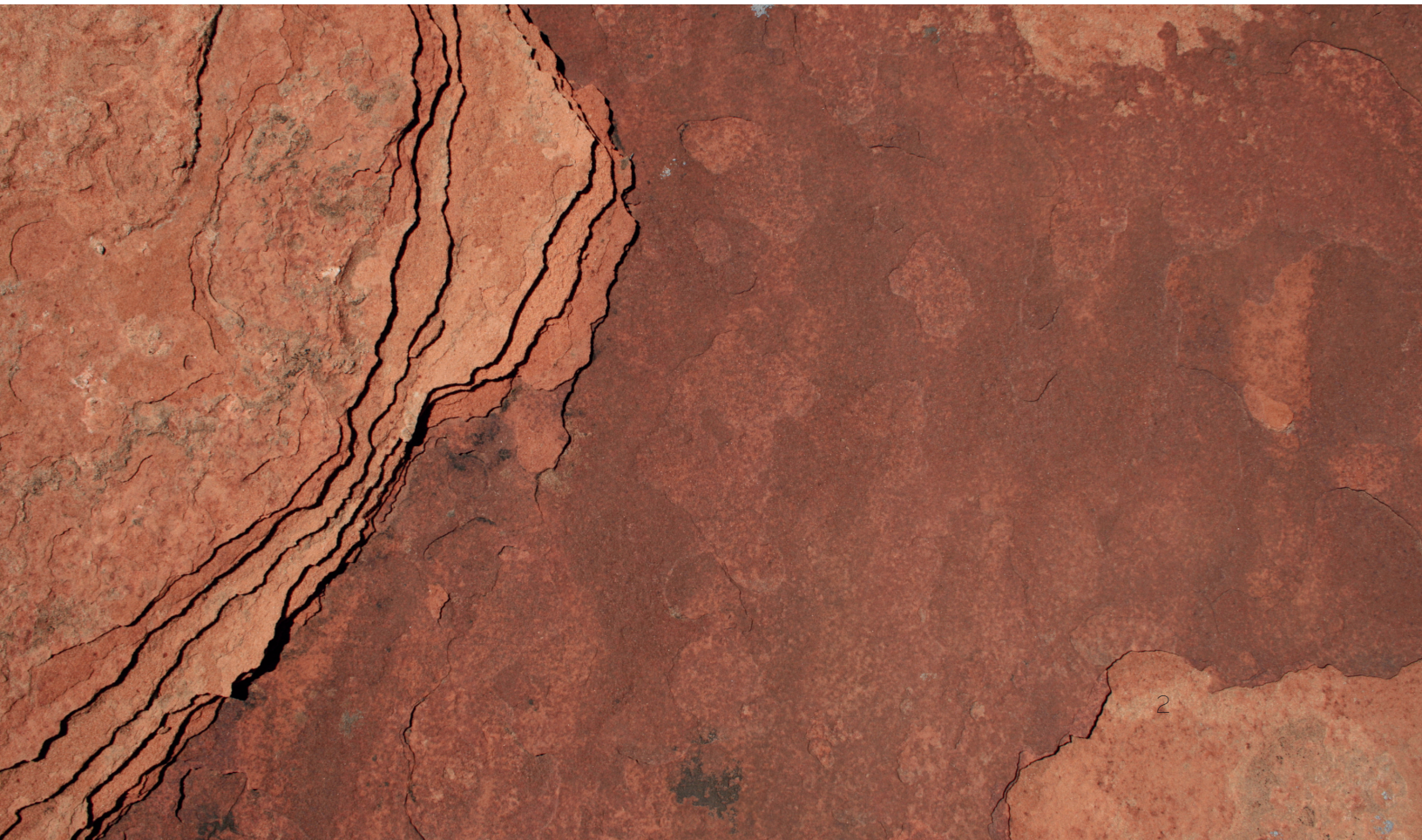
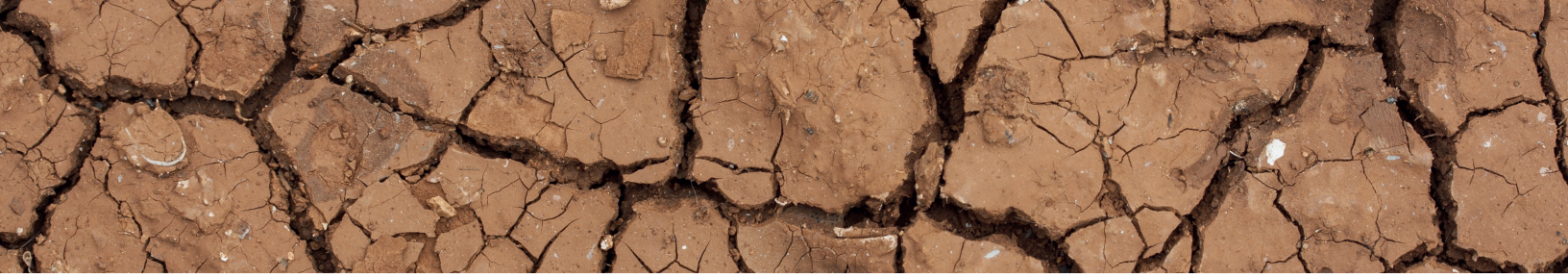


# Experience nature's palette reimagined

Imagine a material that transforms architecture into a canvas of nature. With [ inspires ], a Hi-Strength Cement Rainscreen Panel, EQUITONE introduces a revolutionary approach to facade design—one that reflects the intricate patterns and rich colors of Earth's landscape. This collection brings the beauty of the natural world to life, sparking bold creativity and deeper connections between facades and environment.

Building on our legacy of innovative, high-performance surfaces, [ inspires ] seamlessly blends timeless aesthetics with advanced functionality. Crafted as fire-resistant\* ventilated rainscreen panels, it offers minimal maintenance and a 50+ year lifespan, ensuring lasting performance.

From the weathered lines of wood to the striking patterns of coral, [ inspires ] captures nature's artistry and transforms it into architectural expression. Empowering architects to break convention, this collection invites you to design structures that celebrate the natural world in every detail.





## Design potential

Designed for performance, EQUITONE panels are made from high-density fiber cement, providing superior impact resistance, exceptional durability, and long-lasting weather protection.

From intricate perforations created with waterjet or CNC machines to embossing, high-resolution digital printing, and precise cuts, EQUITONE panels enable boundless design possibilities. Their strength and adaptability allow architects and designers to go beyond façades, incorporating EQUITONE into striking interior features, custom furniture pieces, and other creative applications.

Thanks to advanced digital printing technology, EQUITONE [ inspires ] panels can reproduce any image, color, pattern, or design without repeating patterns—offering limitless opportunities for architectural expression.









# EQUITONE [ inspires ]

EQUITONE [ inspires ] is a high-density fiber cement panel featuring a digitally printed surface coated with a UV-resistant finish. This material offers a durable, dirt-resistant finishing with high abrasion resistance and a permanent anti-graffiti surface.

Touch: smooth, hard, matte.

Visual: modern, elegant, with expressive effect.

Thickness	Width	Lengths
8 mm	1250 mm	2500 - 3100 mm

[ inspires ] is available in 8 different decors with Wood, Rust, Stone, Concrete, Coral, Leaves, Sine Wave and Carved Wood effects.

WOOD



FCW 157 C  
Natural alder



FCW 157  
Classic oak



FCW 156  
Rustic oak



FCW 127  
White oak



FCW 125 B  
Carbon oak



FCW 125  
Old oak



FCW 121 IB  
Light walnut



FCW 121  
American walnut

RUST



FCR 656  
Vertical rust



FCR 535  
Thick rust

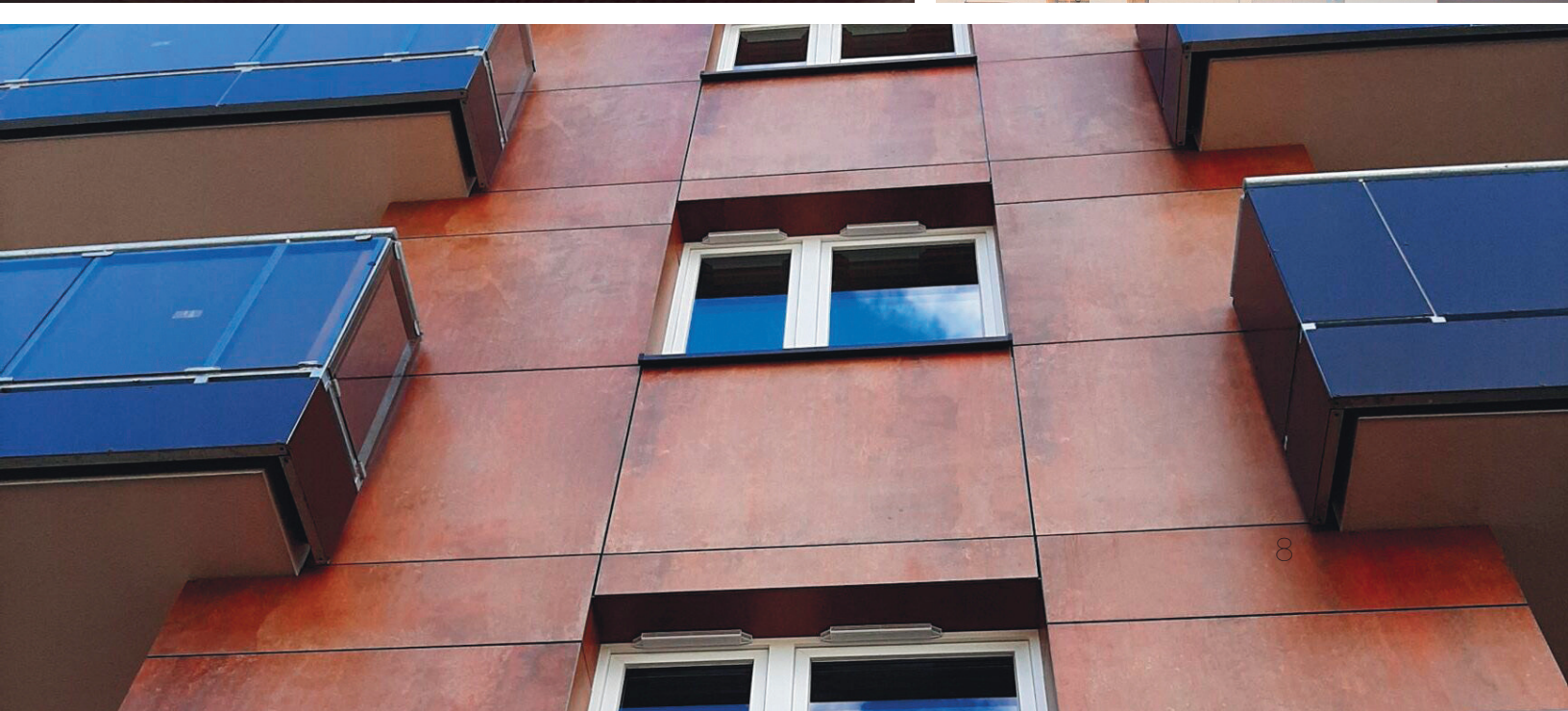
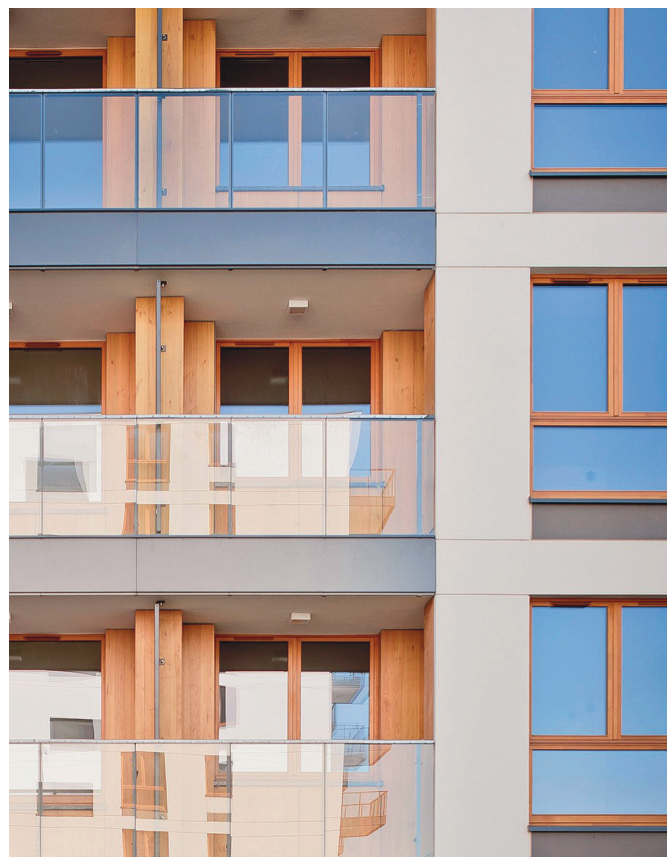


FCR 484  
Wild rust



FCR 454  
Modern rust





# EQUITONE [ inspires ]

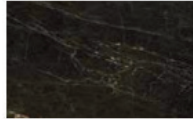
STONE



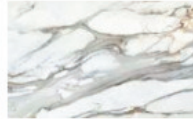
FCS 548  
Black marble



FCS 547  
Cracked marble



FCS 530  
Black stone



FCS 075  
Silver calacatta



FCS 074  
Gold calacatta



FCS 059  
White calacatta



FCS 006  
Beige travertine



FCS 004  
Amber travertine

CONCRETE



FCC 426 B  
Warm concrete



FCC 426  
Bright concrete



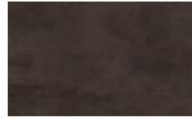
FCC 320  
Grey concrete



FCC 318 A  
Industrial black



FCC 025  
Cracked plaster



FCC 318  
Industrial brown



FCC 292  
Silver concrete



FCC 020 B  
Dark rust

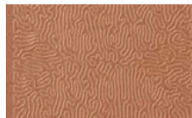


FCC 020 A  
Grey rust

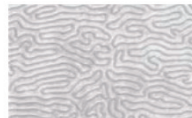


FCC 437  
Wild plaster

CORAL, SINE WAVE, CARVED WOOD



Coral grow



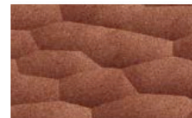
Coral trace



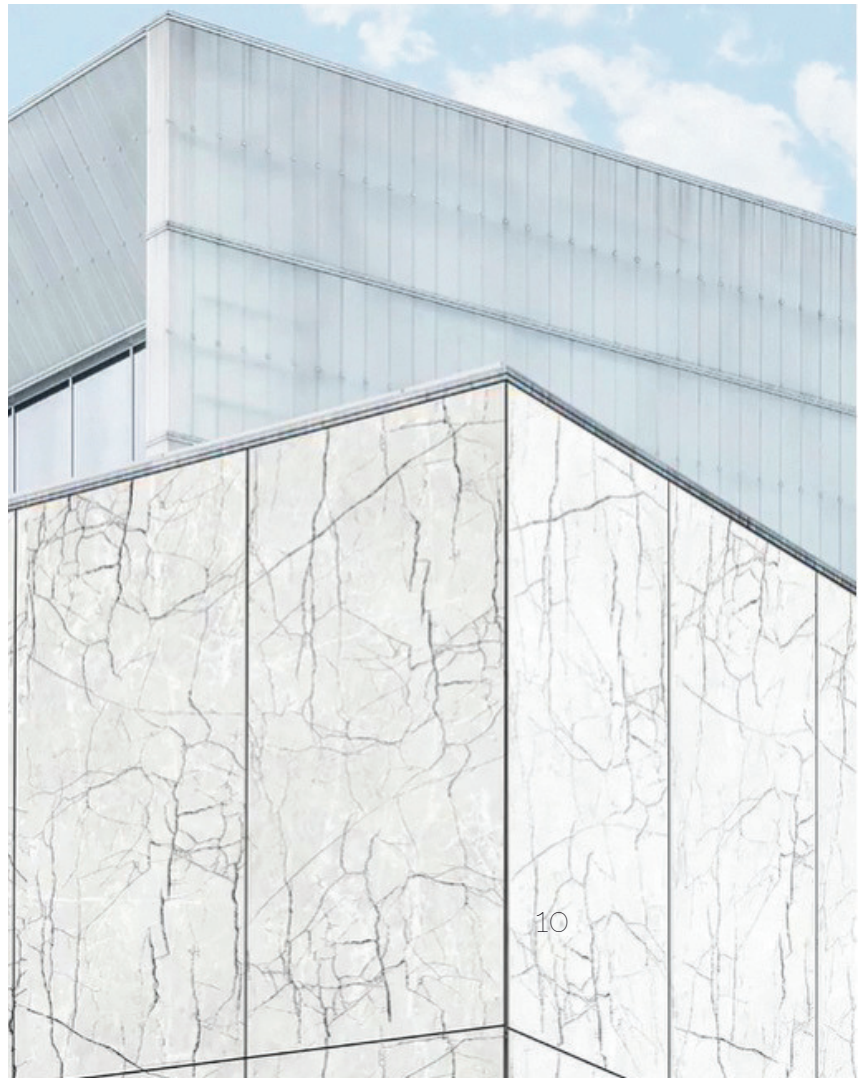
Leaves



Sine wave



Carved wood





Disclaimer: The information in this document is correct at the time of issuing. However, due to our committed program of continuous material and system development, we reserve the right to amend or alter the information contained therein without prior notice. Please visit [www.equitone.com](http://www.equitone.com) to ensure you have the most current version. All figures contained in this document are illustrations and should not be used as construction drawings. This information is supplied in good faith and no liability can be accepted for any loss or damage resulting from its use. This document is protected by international copyright laws. Reproduction and distribution in whole or in part without prior written permission is strictly prohibited. EQUITONE and logos are trademarks of Etex NV or an affiliate thereof. Any use without authorization is strictly prohibited and may violate trademark laws.

#### USA/Canada

1731 Fred Lawson Dr. Maryville TN, 37801

Tel: +1 865 268 0654

E-mail: [info.usa@equitone.com](mailto:info.usa@equitone.com)

[www.equitone.com/en-us/](http://www.equitone.com/en-us/)

[www.equitone.com/en-ca/](http://www.equitone.com/en-ca/)

Follow us:    