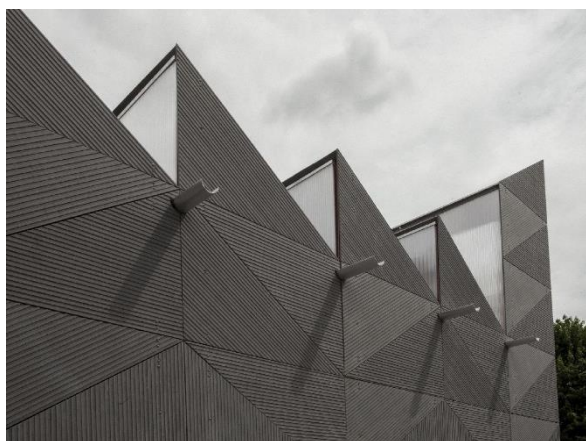


ENVIRONMENTAL PRODUCT DECLARATION: SUMMARY

EQUITONE [linea]/[lines], [lunara]



Product description

EQUITONE [linea]/[lines], [lunara] is a high-density through coloured fibre cement panel with no coating. The panel has an honest, pure and natural appearance with natural colour variations and hues. The natural characteristic of the panel may be accentuated by the production process as well as light or dark inclusions. The panel has been made water repellent by means of hydrophobation. The front face of the EQUITONE [linea]/[lines] features grooves, while the surface structure of EQUITONE [lunara] is covered with tiny irregular elevations and depressions providing a natural appearance.

Declared/Functional Unit

Results below are related to the production and installation of 1 m² EQUITONE [linea] LT20 with a thickness of 10 mm and a mass of 16.8 kg. According to the results of the variability study, the EPD results are representative for the EQUITONE [linea]/[lines] and [lunara] range with a thickness of 10 mm.

EPD Programme operator	EPD HUB	Main environmental data source	Ecoinvent 3.8
EPD registration no.	HUB-3121	Geographical scope	Europe
Validity period	4 April 2025 - 4 April 2030	Manufacturing location	Kapelle-o/d-Bos, Belgium
Followed standards for LCA/ EPD	ISO 14025 & EN15804+A2:2019	Reference year of production data	Calendar year 2023

Key Assessment Results

CARBON FOOTPRINT	TOTAL GLOBAL WARMING POTENTIAL (GWP) (including fossil, biogenic and luluc GWP)
Product - Cradle to gate [A1-A3] ⁽¹⁾	9.1 kgCO ₂ -Eq./m ²
Product & Construction - Cradle to gate with options [A1-A5] ⁽²⁾	12.5 kgCO ₂ -Eq./m ²
Embodied Carbon - Cradle to gate with options including A, B1-B5 ⁽³⁾ and C ⁽⁴⁾ modules	12.7 kgCO ₂ -Eq./m ²

- (1). The manufacturing site uses natural gas and 100% green electricity as energy sources during manufacturing.
- (2). For the transportation from the production plant to the jobsite, a scenario was assumed with a transportation distance of 100 km via lorry. For other transportation distances, the impacts can be calculated by multiplying module A4 impact with the transport distance to the specific location and dividing by 100. For other transportation methods (like "transport, freight, sea, container ship"), the corresponding impacts need to be included.
- (3). This product includes cement, that over the lifetime of the product will absorb CO₂ from the atmosphere, which can be seen as negative GWP values in B1. The amount of absorbed CO₂ highly depends on the exposure conditions during the use phase, here the use scenario "outdoor, exposed to rain" was calculated.
- (4). Values in table are for the scenario in which 100% of boards and fixing materials from post-consumer demolition wastes goes to landfill at end of life. In the EPD document, both 100% recycling and 100% landfilling scenarios are declared

Product			Construction		Building maintenance and use - B							Building End of Life - C			
A1	A2	A3	A4	A5	B1	B2	B3	B4	B5	B6	B7	C1	C2	C3	C4
Raw Material	RM Transport to Factory	Manufacture products	Transport to site	Construction of the building	Use	Maintenance	Repair	Replacement	Refurbishment	Energy use for Building usage	Water Use for Building usage	Demolishing the building	Haul away waste materials	Recycling	Disposal
Embodied carbon											Embodied carbon				

For the full EPD, visit: [Home | EPD Hub](#)

For additional product information, visit: [EQUITONE](#)