

Arch.: Delugan Meissl Associated Architects, Vienna, Austria

 **EQUITONE**  
Fibre cement facade materials





# EQUITONE fibre cement facade materials

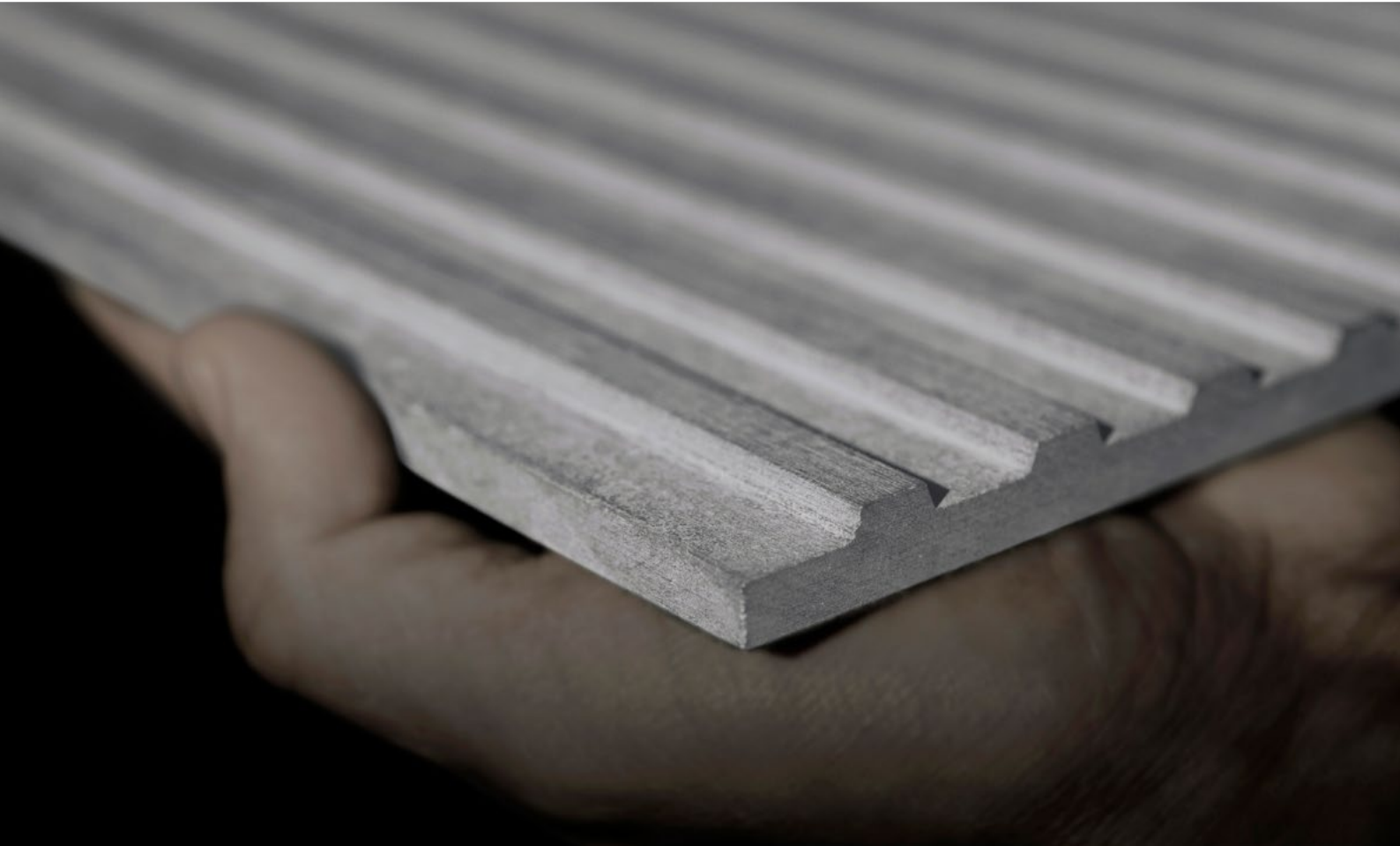
When Ludwig Hatschek invented fibre cement in the late 19th century, he combined the basic elements of the earth: mineral materials, water, air and fire (heat) in a simple filtration process. Our mother company, Etex, has been manufacturing fibre cement materials since 1905. The most prestigious incarnation in this proud heritage of unique materials is the EQUITONE® facade material range. The Hatschek production process makes each EQUITONE facade panel unique with an individual fibre cement texture. Most EQUITONE facade materials are through-coloured with a raw, unfinished character.

In the 1950s leading architects such as Walter Gropius pioneered the use of coated fibre cement panels using the ventilated facade (rainscreen) system. Designer Willy Guhl created the famous “loop chair” from 1 piece of fibre cement in 1954.

This design still bears witness to the core qualities of the fibre cement base material: thin, light, durable and beautiful. In 1987, Herzog & De Meuron designed the Ricola storage building in Laufen using uncoated fibre cement panels.

The resulting shutter facade, which is a reference to the cardboard boxes inside, inspired our company to start the industrial development of raw untreated fibre cement materials.

Today, EQUITONE has a full range of through-coloured, untreated fibre cement materials. Leading architects of our time are exploring and transforming the EQUITONE material in remarkable facade designs.





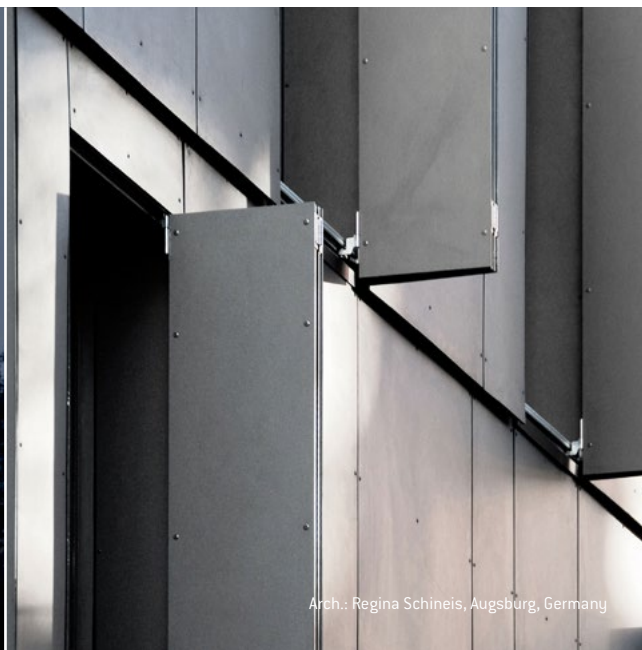
# Design potential

EQUITONE facade materials offer unparalleled design flexibility. The fibre cement material is through-coloured, which means the surface displays the inner texture and colour of the core fibre cement material. No matter what facade design options you explore, the through-coloured materials can be transformed into crisp, monolithic facade details.

EQUITONE facade materials come in a maximum panel size of 1.25 x 3m (4' x 10') and can be transformed into any size or shape using standard tools in the workshop or on site. The material can be perforated using waterjet or CNC machines, large or very small cuts can be made, it can even be embossed and printed. Some designers have used it for interiors or furniture. The through-coloured material allows you to achieve flawless intricate details.



Arch.: AR-TE, Leuven, Belgium



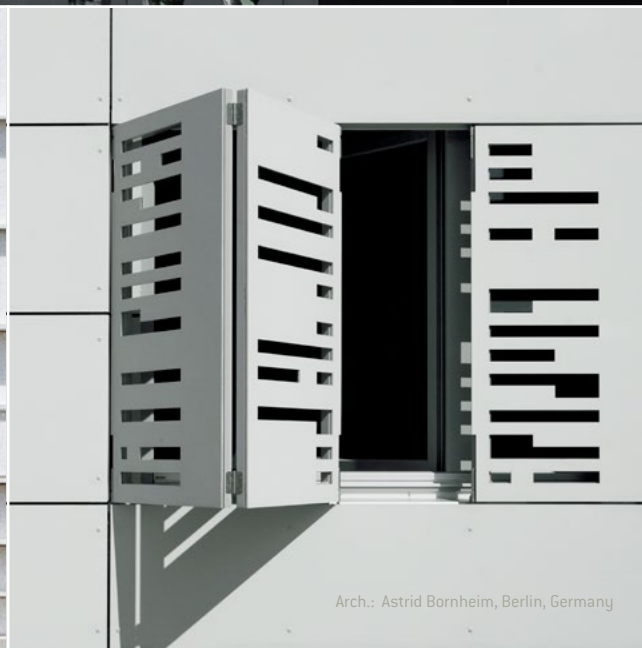
Arch.: Regina Schineis, Augsburg, Germany



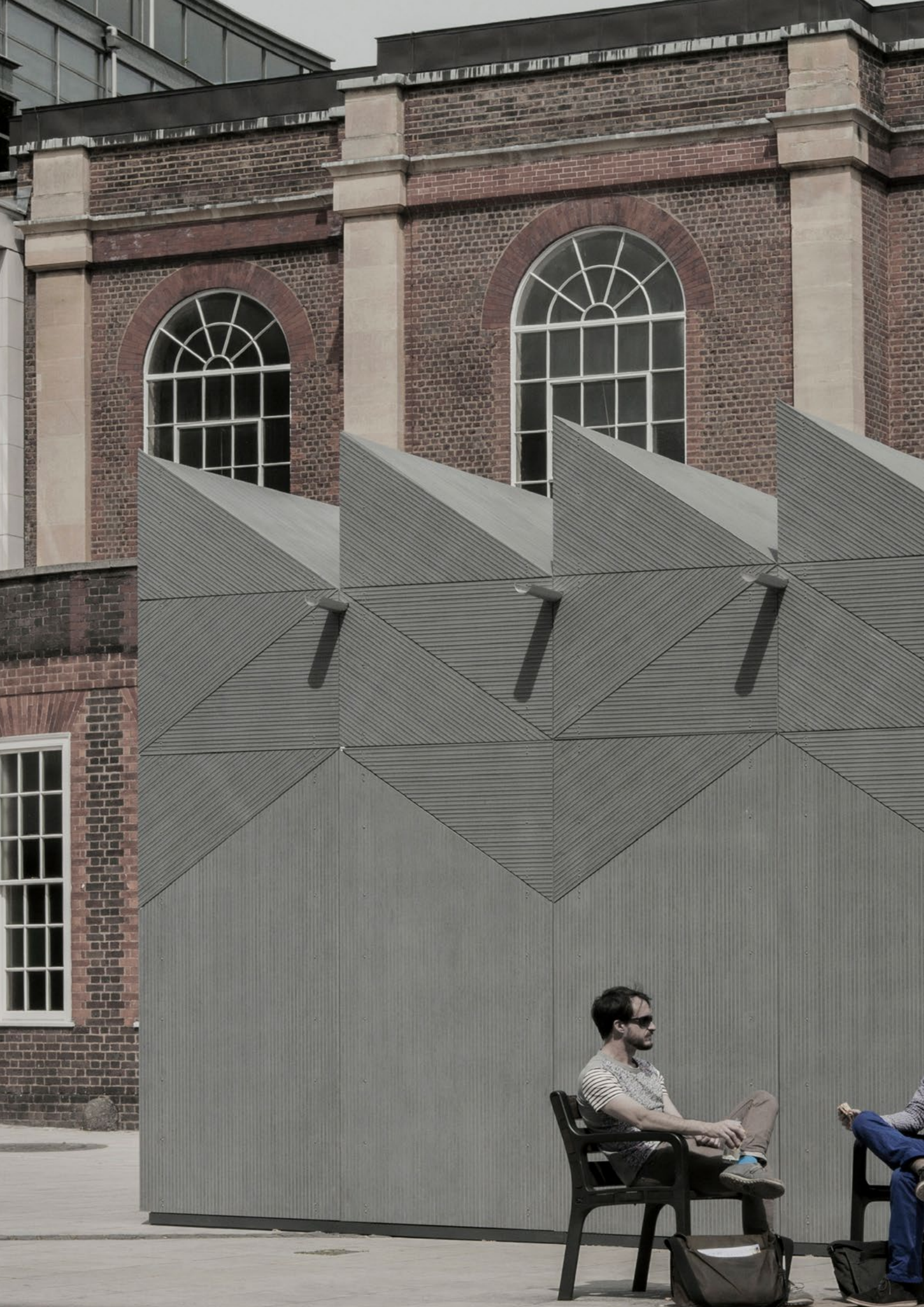
Arch.: Bogusław Wórzeczka, Wrocław, Poland



Arch.: Busmann + Haberer, Berlin, Germany



Arch.: Astrid Bornheim, Berlin, Germany





# EQUITONE [linea]

---

**CLERKENWELL DESIGN**

Initiated by  
CDE Presents

Studio Weave in conjunction with EQUITONE  
First of a series of facade materials

**EQUITONE**

By Weave  
By Weave  
By Weave

# EQUITONE [ linea ]

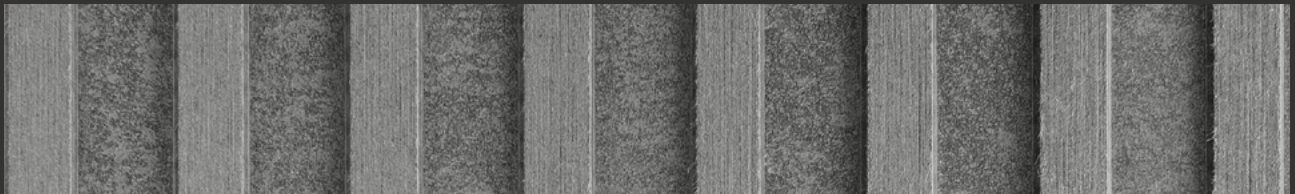
EQUITONE [linea] is a unique 3D shaped, through-coloured facade material that plays with light and shadow. It displays a linear texture that highlights the raw inner texture of the core fibre cement material.

**Touch:** Structured, relief, depth.

**Visual:** Different, playful, lot of possibilities, changes depending on the point of view.

Available in 4 colours.

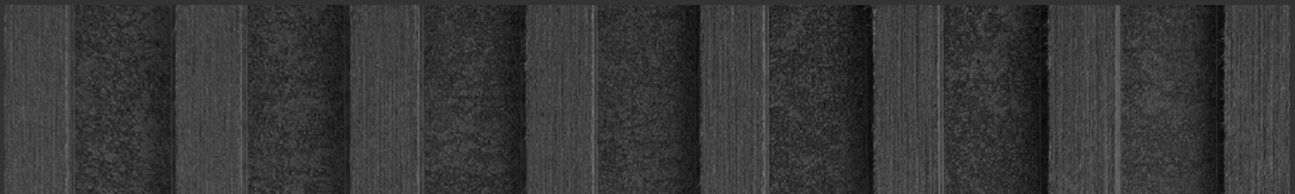
Thickness	Width	Lengths
10 mm	1220 mm	2500 - 3050 mm



LT20



LT60



LT85



LT90





Arch.: Studio Weave, London

the nature of things

EQUITONE shadow art by Fred Eerdeken



EQUITONE [lunara]

---

# EQUITONE [lunara]

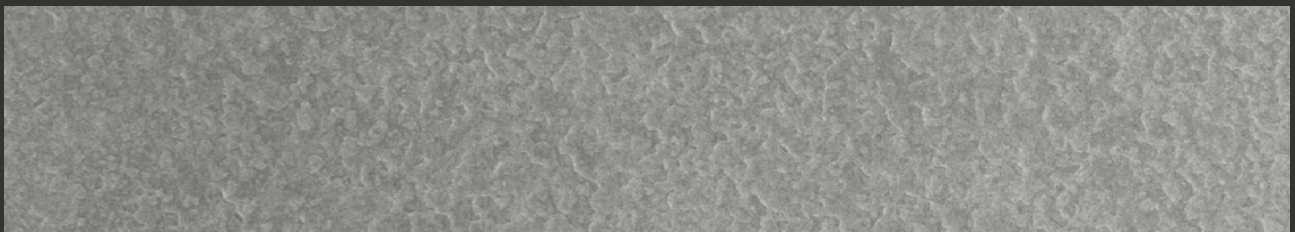
EQUITONE [lunara] is a through-coloured fibre cement panel with a surface resembling a lunar landscape. Each panel is unique in terms of its colour, texture and surface, with a pattern that is not repeated.

**Touch:** Rough, unpolished fibre cement surface with delicate linen touch.

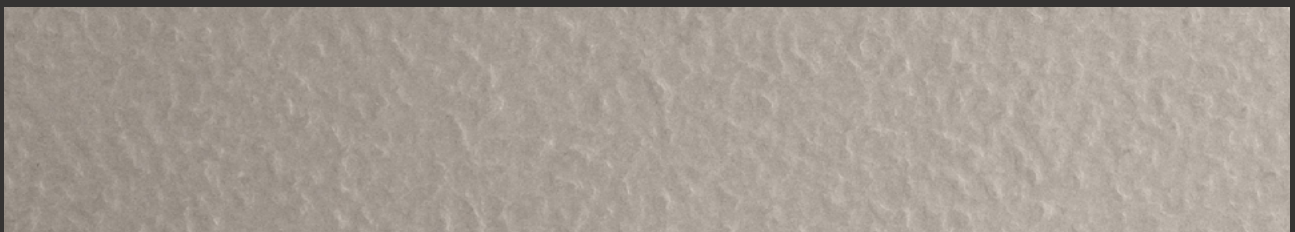
**Visual:** Expressive, natural, unique.

Available in 2 colours.

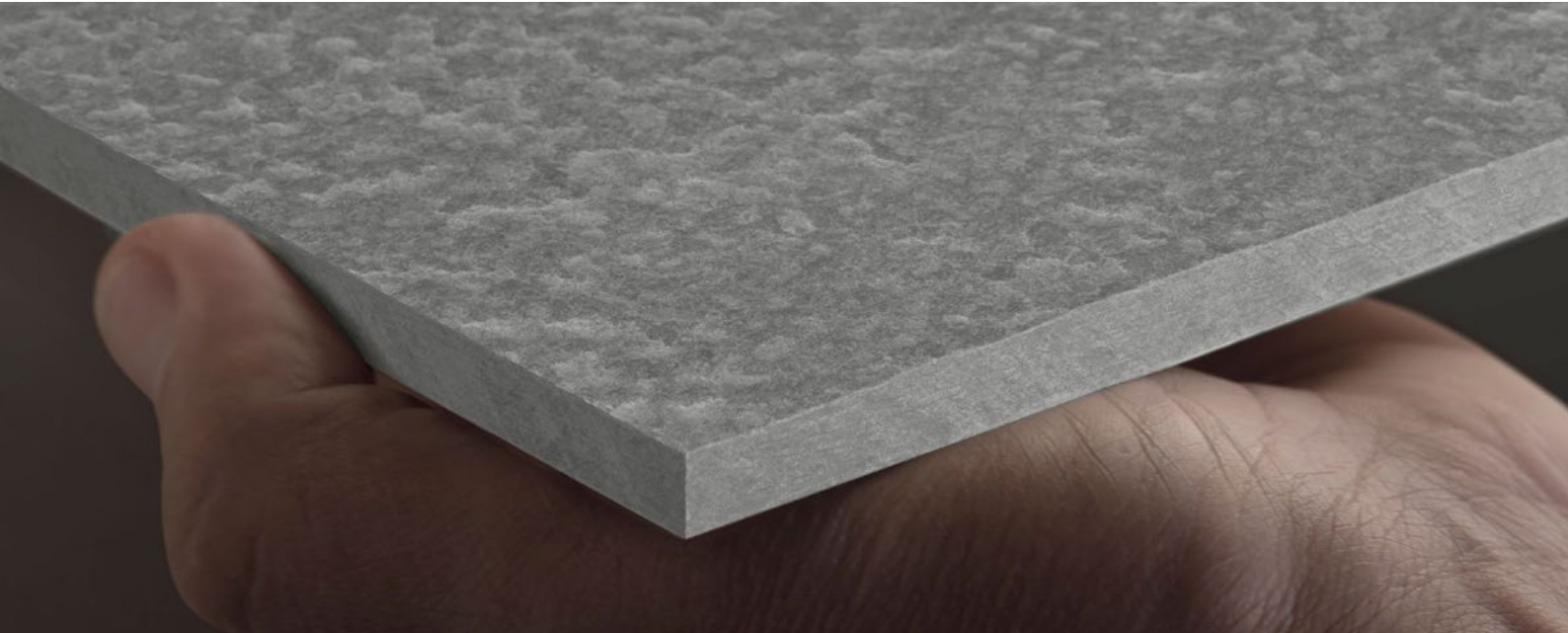
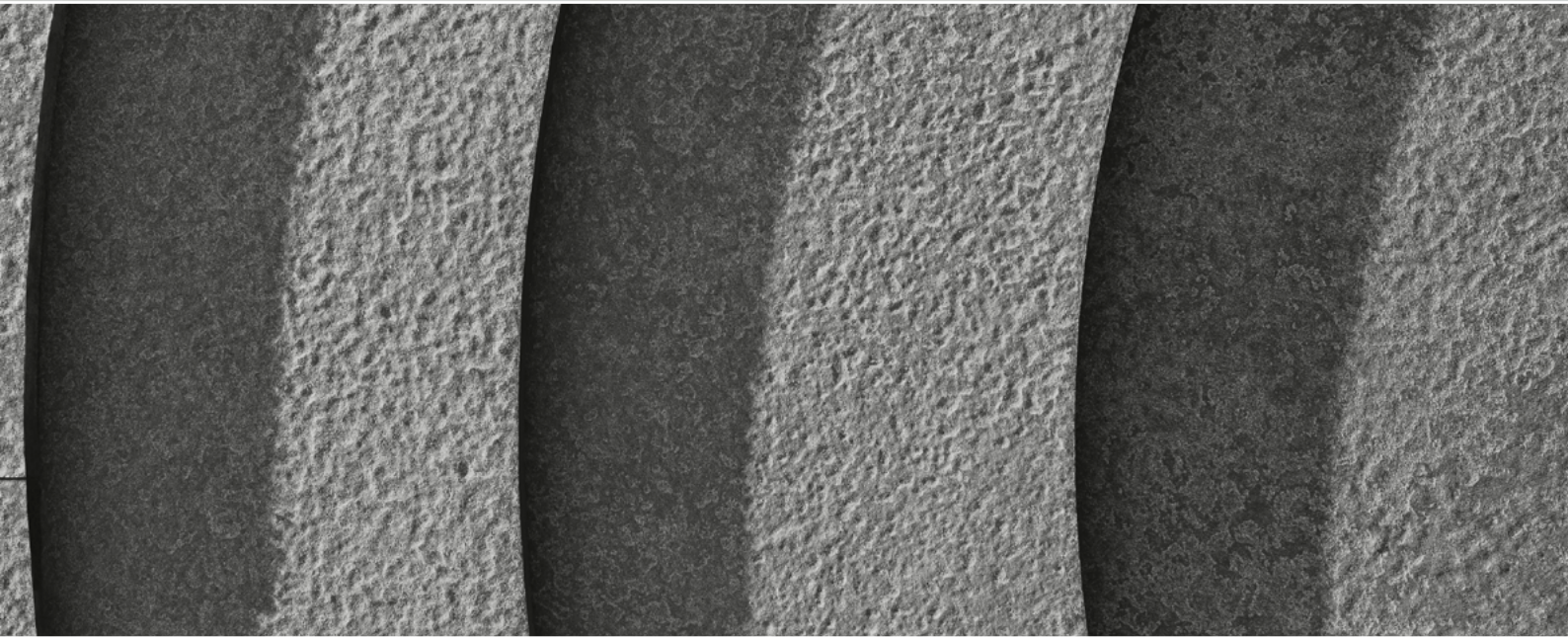
Thickness	Width	Lengths
10 mm	1220 mm	2500 - 3050 mm



LA 20



LA 60





A photograph of a modern building facade. The building features a grid of grey, rectangular panels. A large window is visible, reflecting the sky and clouds. The sky is a deep blue with scattered white clouds. The building's design is minimalist and geometric.

EQUITONE [tectiva]

# EQUITONE [tectiva]

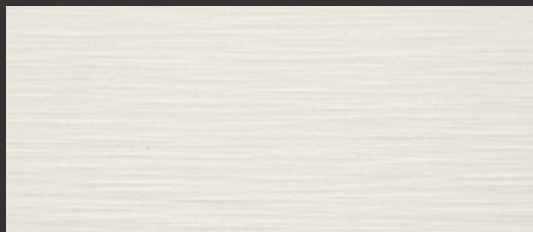
EQUITONE [tectiva] is a through-coloured facade material, characterised by a sanded surface. Every panel is unique, strongly expressing the raw texture of the core fibre cement material.

**Touch:** Fine sanding lines.

**Visual:** Dry, lively, dynamic, with naturally occurring hues within the material.

Available in 9 colours.

Thickness	Width	Lengths
8 mm	1220 mm	2500 - 3050 mm



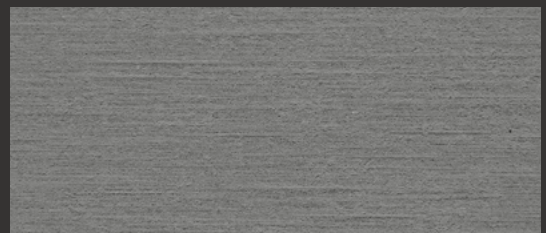
TE90



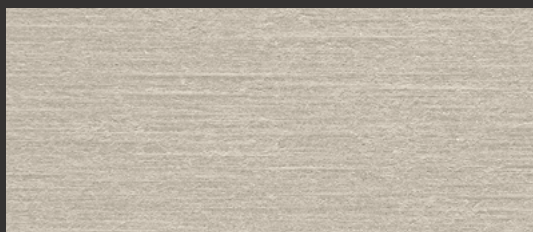
TE15



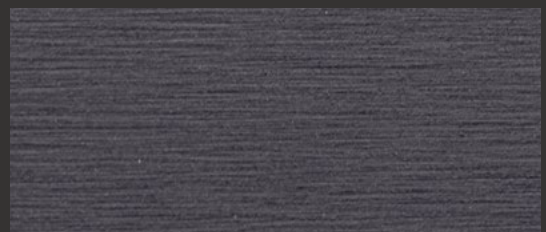
TE00



TE20



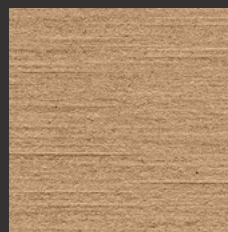
TE10



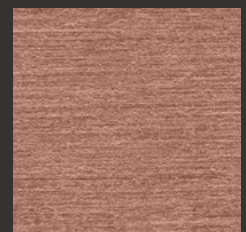
TE85



TE60



TE30

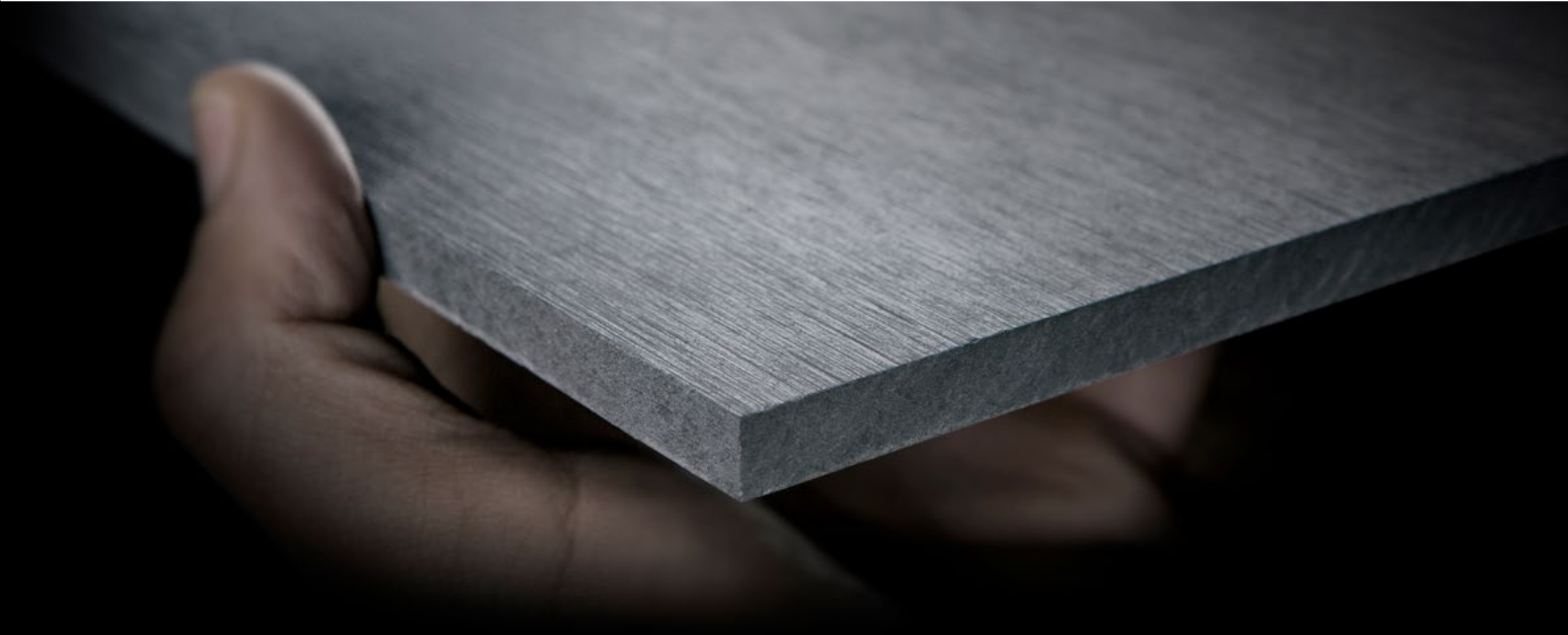


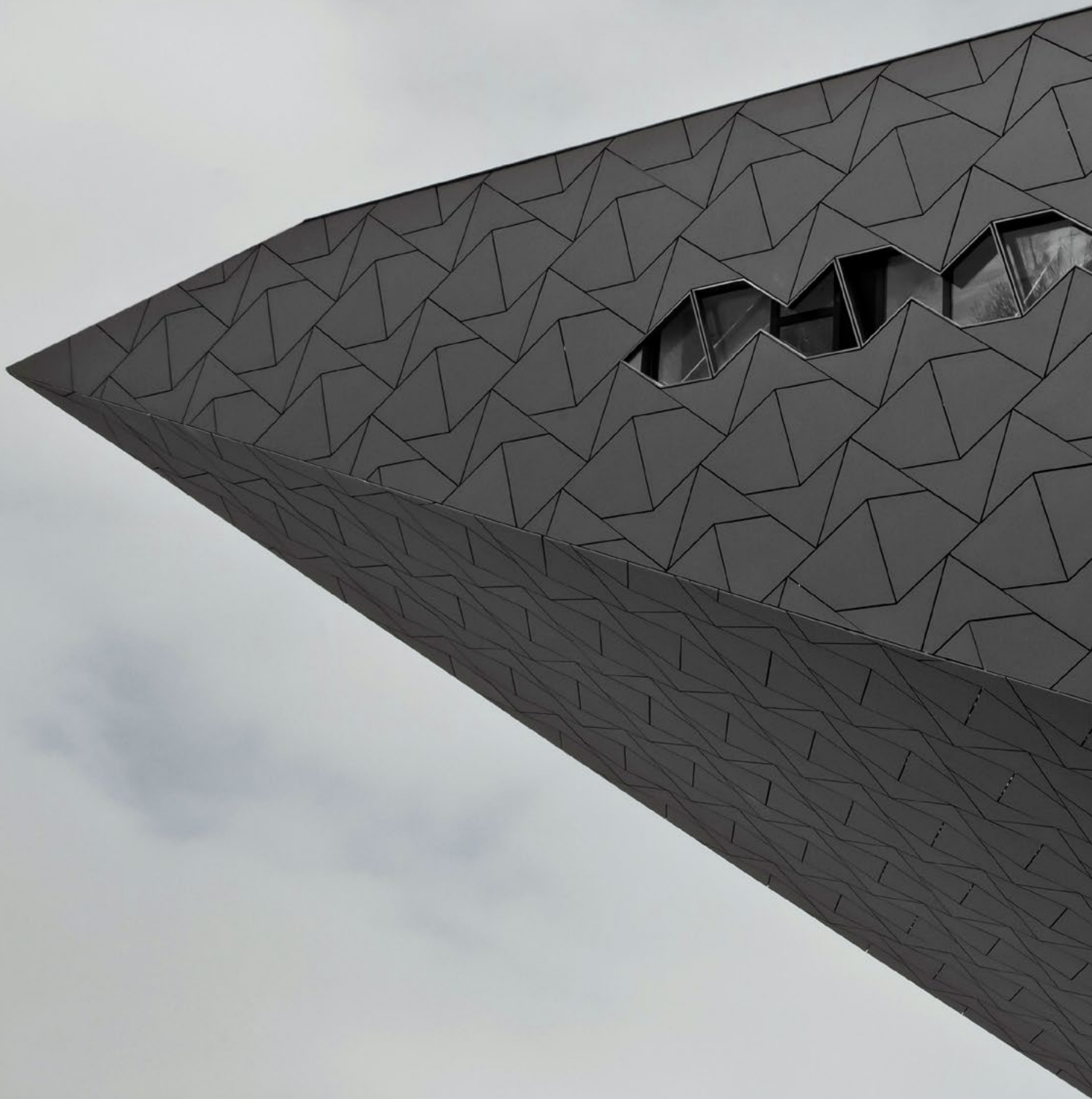
TE40

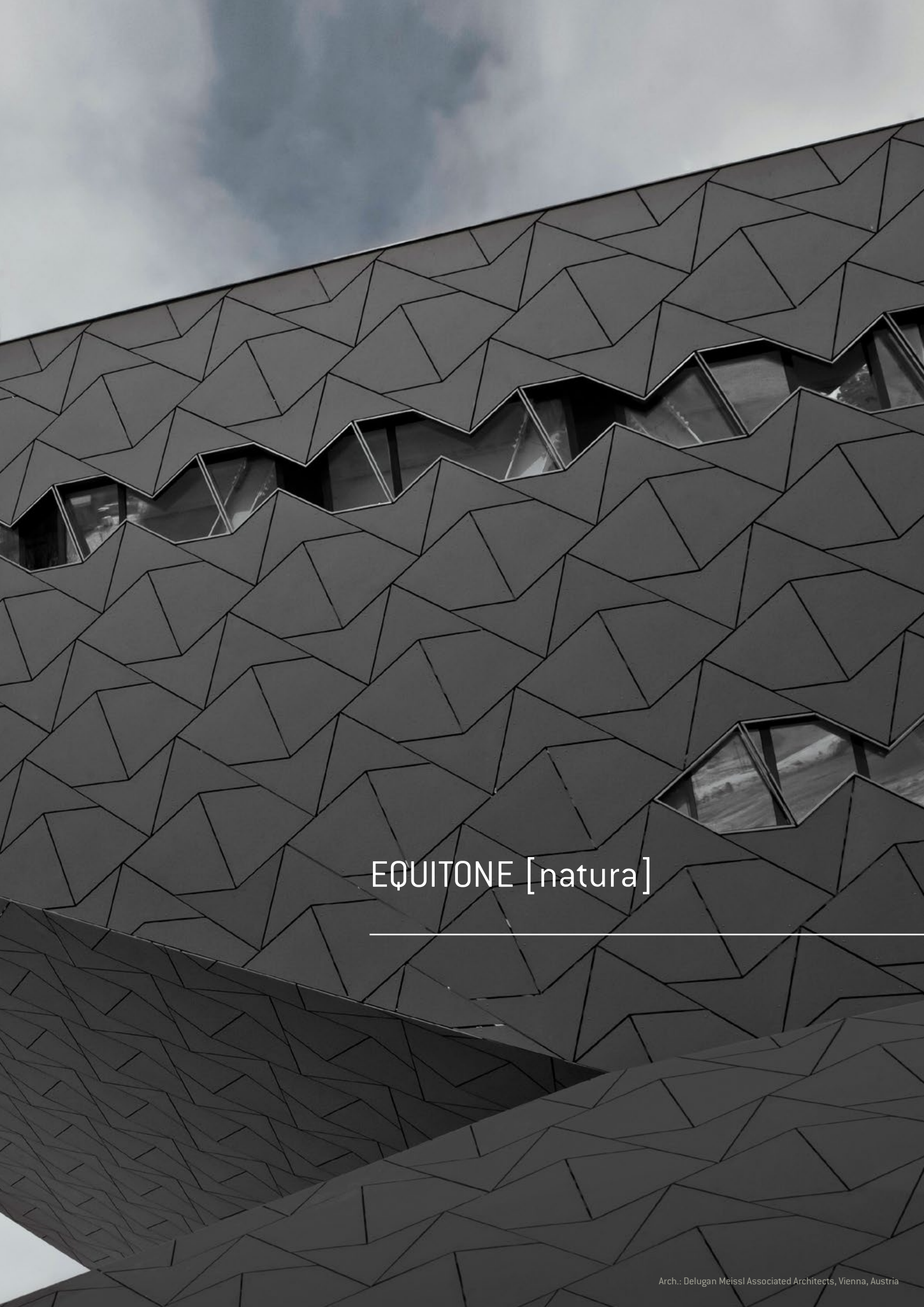




Arch.: B-architecten, Antwerp, Belgium







EQUITONE [natura]

---

# EQUITONE [natura]

EQUITONE [natura] is a through-coloured facade material. It has a sleek and refined surface with visible fibres randomly distributed throughout.

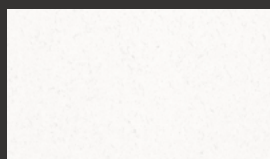
**Touch:** Matt, silk, smooth surface finish.

**Visual:** Fibres distributed randomly like the milky way, refined, precious.

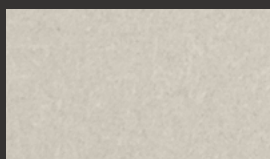
Available in 27 colours.

Thickness	Width	Lengths
8 - 12 mm	1250 mm	2500 - 3100 mm

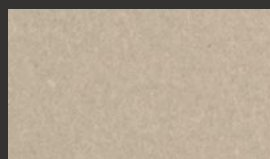
## THROUGH-COLOURED



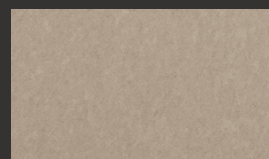
N164



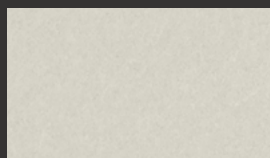
N154



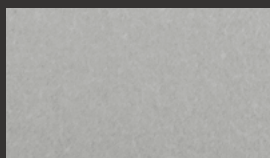
N861



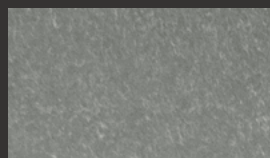
N961



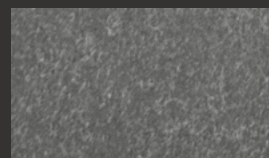
N162



N163



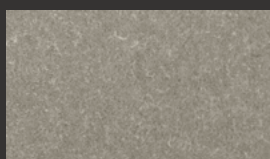
N211



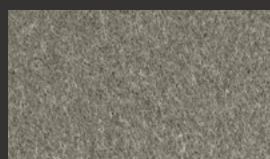
N252



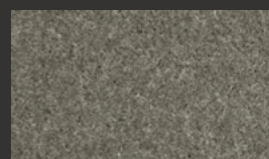
N161



N892



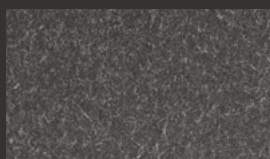
N250



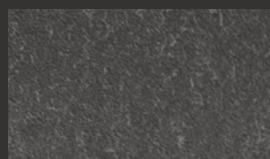
N294



N891



N251

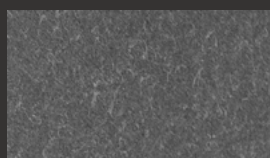


N073



N074

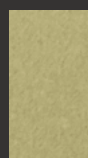
## SPECIAL COLOURS



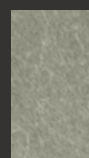
N281



N661



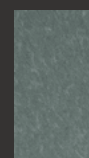
N662



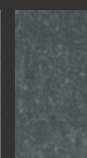
N593



N594



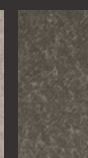
N411



N412



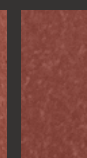
N991



N972



N331



N359

Other colours available on request, subject to minimum order quantities.



# EQUITONE [pictura]

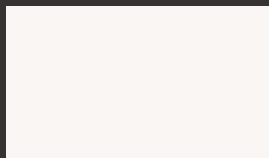
EQUITONE [pictura] is a fibre cement facade material with an ultra matt architectural finish. Thousands of custom-matched matt project colours are available on request.

**Touch:** Smooth, matt, no visible fibres.

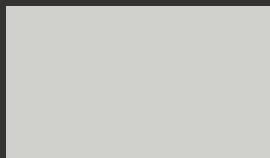
**Visual:** Classic, brings colourful accents in the facade

Available in 20 standard colours. Other colours on request, subject to minimum order quantities.

Thickness	Width	Lengths
8 - 12 mm	1250 mm	2500 - 3100 mm



PW 141



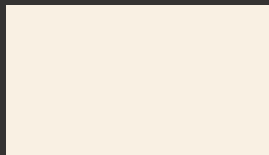
PG 243



PG 241



PA 041



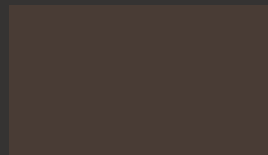
PW 841



PG 843



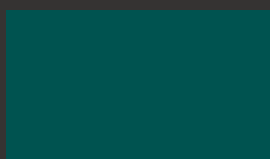
PG 844



PA 944



PG 542



PG 546



PG 444



PG 342



PG 642



PG 545



PG 443



PG 341



PG 641



PG 544



PG 442



PG 742

Other colours available on request, subject to minimum order quantities.



This document is protected by international copyright laws. Reproduction and distribution in whole or in part without prior written permission is strictly prohibited. EQUITONE and logos are trademarks of Etex NV or an affiliate thereof. Any use without authorisation is strictly prohibited and may violate trademark laws.



 **EQUITONE**  
Fibre cement facade materials

Arch: Arkitekterne Bjørk & Maigård ApS, Aalborg, Denmark

[equitone.com](http://equitone.com)

Follow us:

 **EQUITONE Export**  
 **EQUITONE Export**

**Euro Panels Overseas N.V.**  
[info.europanel@etexgroup.com](mailto:info.europanel@etexgroup.com)